



[Go to Product page](#)

Datasheet for ABIN7167244
anti-RAB2A antibody (AA 1-234)

2 Images

Overview

Quantity:	100 µg
Target:	RAB2A
Binding Specificity:	AA 1-234
Reactivity:	Human
Host:	Rabbit
Clonality:	Polyclonal
Conjugate:	This RAB2A antibody is un-conjugated
Application:	Western Blotting (WB), ELISA, Immunohistochemistry (IHC)

Product Details

Immunogen:	Recombinant Human Ras-related protein Rab-20 protein (1-234AA)
Isotype:	IgG
Cross-Reactivity:	Human
Purification:	>95%, Protein G purified

Target Details

Target:	RAB2A
Alternative Name:	RAB2 (RAB2A Products)
Background:	Background: Plays a role in apical endocytosis/recycling. Plays a role in the maturation and acidification of phagosomes that engulf pathogens, such as S.aureus and M.tuberculosis. Plays

Target Details

a role in the fusion of phagosomes with lysosomes.

Aliases: FLJ20429 antibody, RAB20 antibody, RAB20 member RAS oncogene family antibody, RAB20_HUMAN antibody, Ras related protein Rab20 antibody, Ras-related protein Rab-20 antibody

UniProt: [Q9NX57](#)

Pathways: [SARS-CoV-2 Protein Interactome](#)

Application Details

Application Notes: Recommended dilution: WB:1:1000-1:5000, IHC:1:20-1:200,

Restrictions: For Research Use only

Handling

Format: Liquid

Buffer: Preservative: 0.03 % Proclin 300
Constituents: 50 % Glycerol, 0.01M PBS, PH 7.4

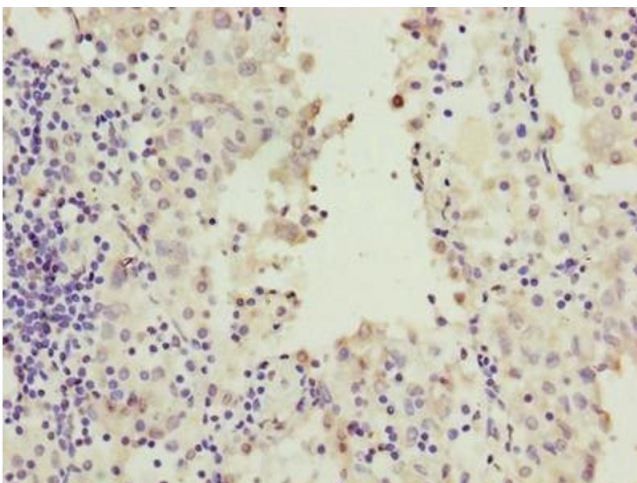
Preservative: ProClin

Precaution of Use: This product contains ProClin: a POISONOUS AND HAZARDOUS SUBSTANCE which should be handled by trained staff only.

Storage: -20 °C,-80 °C

Storage Comment: Upon receipt, store at -20°C or -80°C. Avoid repeated freeze.

Images



Immunohistochemistry

Image 1. Immunohistochemistry of paraffin-embedded human lung cancer using ABIN7167244 at dilution of 1:100



Western Blotting

Image 2. Western blot All lanes: RAB20 antibody at 0.6 μ g/mL Lane 1: HL60 whole cell lysate Lane 2: U937 whole cell lysate Secondary Goat polyclonal to rabbit IgG at 1/10000 dilution Predicted band size: 26 kDa Observed band size: 26 kDa