

Datasheet for ABIN7167252
anti-RAB23 antibody (AA 1-237)

3 Images

[Go to Product page](#)

Overview

Quantity:	100 µL
Target:	RAB23
Binding Specificity:	AA 1-237
Reactivity:	Human
Host:	Rabbit
Clonality:	Polyclonal
Conjugate:	This RAB23 antibody is un-conjugated
Application:	Western Blotting (WB), ELISA, Immunohistochemistry (IHC)

Product Details

Immunogen:	Recombinant Human Ras-related protein Rab-23 protein (1-237AA)
Isotype:	IgG
Cross-Reactivity:	Human, Mouse, Rat
Purification:	Antigen Affinity Purified

Target Details

Target:	RAB23
Alternative Name:	RAB23 (RAB23 Products)
Background:	Background: The small GTPases Rab are key regulators of intracellular membrane trafficking, from the formation of transport vesicles to their fusion with membranes. Rabs cycle between

Target Details

an inactive GDP-bound form and an active GTP-bound form that is able to recruit to membranes different set of downstream effectors directly responsible for vesicle formation, movement, tethering and fusion. Together with SUFU, prevents nuclear import of GLI1, and thereby inhibits GLI1 transcription factor activity. Regulates GLI1 in differentiating chondrocytes. Likewise, regulates GLI3 proteolytic processing and modulates GLI2 and GLI3 transcription factor activity. Plays a role in autophagic vacuole assembly, and mediates defense against pathogens, such as S.aureus, by promoting their capture by autophagosomes that then merge with lysosomes.

Aliases: DKFZp781H0695 antibody, HSPC137 antibody, MGC8900 antibody, Rab 23 antibody, RAB family small GTP binding protein RAB 23 antibody, Rab23 antibody, RAB23, member RAS oncogene family antibody, RAB23_HUMAN antibody, Ras related protein Rab 23 antibody, Ras-related protein Rab-23 antibody

UniProt: [Q9ULC3](#)

Pathways: [Tube Formation](#)

Application Details

Application Notes: Recommended dilution: WB:1:1000-1:5000, IHC:1:20-1:200,

Restrictions: For Research Use only

Handling

Format: Liquid

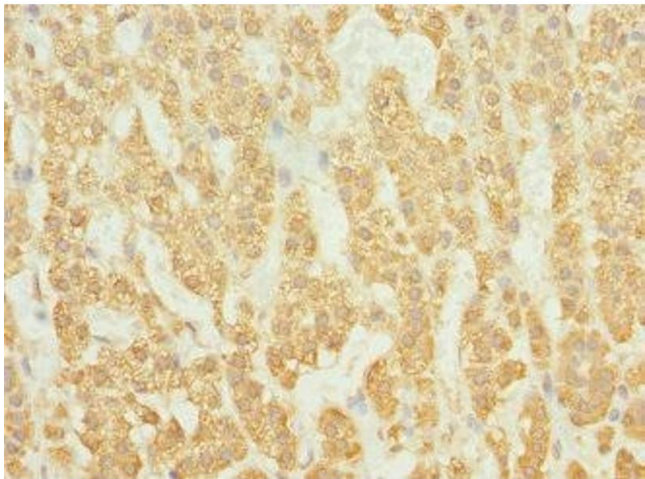
Buffer: PBS with 0.02 % sodium azide, 50 % glycerol, pH 7.3.

Preservative: Sodium azide

Precaution of Use: This product contains Sodium azide: a POISONOUS AND HAZARDOUS SUBSTANCE which should be handled by trained staff only.

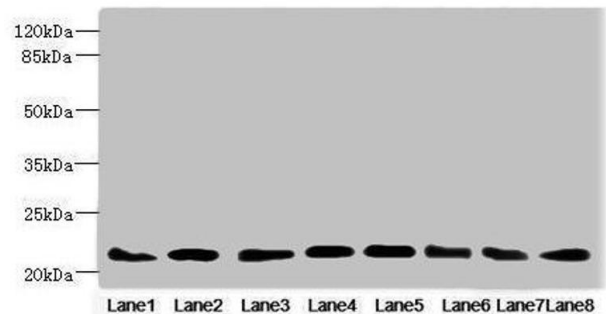
Storage: -20 °C, -80 °C

Storage Comment: Upon receipt, store at -20°C or -80°C. Avoid repeated freeze.



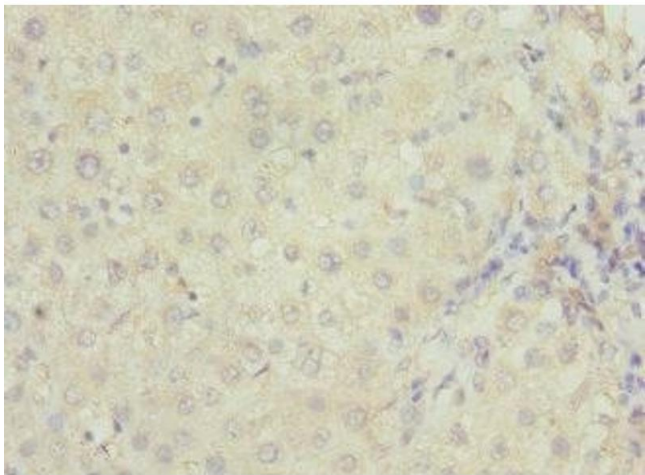
Immunohistochemistry

Image 1. Immunohistochemistry of paraffin-embedded human adrenal gland tissue using ABIN7167252 at dilution of 1:100



Western Blotting

Image 2. Western blot All lanes: RAB23 antibody at 3.88 μ g/mL Lane 1: Mouse ocular tissue Lane 2: Rat brain tissue Lane 3: Mouse kidney tissue Lane 4: Mouse lung tissue Lane 5: Mouse brain tissue Lane 6: NIH/3T3 whole cell lysate Lane 7: MCF-7 whole cell lysate Lane 8: Hela whole cell lysate Secondary Goat polyclonal to rabbit IgG at 1/10000 dilution Predicted band size: 27 kDa Observed band size: 27 kDa



Immunohistochemistry

Image 3. Immunohistochemistry of paraffin-embedded human liver cancer using ABIN7167252 at dilution of 1:100