

Datasheet for ABIN7167262
anti-RAB25 antibody (AA 1-210)

3 Images

[Go to Product page](#)

Overview

Quantity:	100 µg
Target:	RAB25
Binding Specificity:	AA 1-210
Reactivity:	Human
Host:	Rabbit
Clonality:	Polyclonal
Conjugate:	This RAB25 antibody is un-conjugated
Application:	ELISA, Immunohistochemistry (IHC), Western Blotting (WB), Immunofluorescence (IF)

Product Details

Immunogen:	Recombinant Human Ras-related protein Rab-25 protein (1-210AA)
Isotype:	IgG
Cross-Reactivity:	Human, Mouse
Purification:	>95%, Protein G purified

Target Details

Target:	RAB25
Alternative Name:	RAB25 (RAB25 Products)
Background:	Background: Involved in the regulation of cell survival. Promotes invasive migration of cells in which it functions to localize and maintain integrin alpha-V/beta-1 at the tips of extending

Target Details

pseudopodia (PubMed:17925226). Involved in the regulation of epithelial morphogenesis through the control of CLDN4 expression and localization at tight junctions. May selectively regulate the apical recycling pathway. Together with MYO5B regulates transcytosis.

Aliases: CATX 8 antibody, CATX-8 antibody, CATX8 antibody, RAB11C antibody, RAB25 antibody, RAB25 member RAS oncogene family antibody, RAB25_HUMAN antibody, Ras related protein Rab 25 antibody, Ras-related protein Rab-25 antibody, RP11-336K24.10-001 antibody

UniProt: [P57735](#)

Application Details

Application Notes: Recommended dilution: WB:1:500-1:5000, IHC:1:20-1:200, IF:1:50-1:200,

Restrictions: For Research Use only

Handling

Format: Liquid

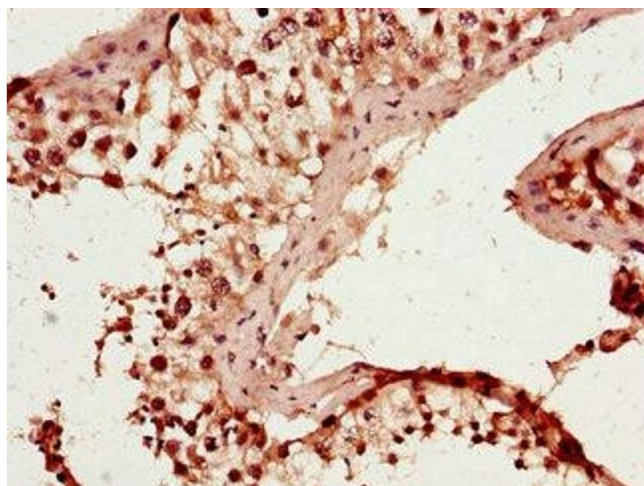
Buffer: Preservative: 0.03 % Proclin 300
Constituents: 50 % Glycerol, 0.01M PBS, PH 7.4

Preservative: ProClin

Precaution of Use: This product contains ProClin: a POISONOUS AND HAZARDOUS SUBSTANCE which should be handled by trained staff only.

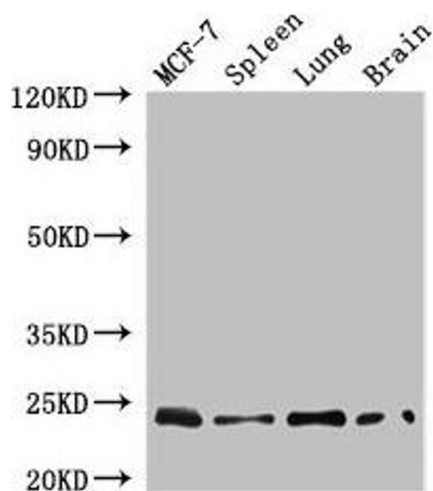
Storage: -20 °C,-80 °C

Storage Comment: Upon receipt, store at -20°C or -80°C. Avoid repeated freeze.



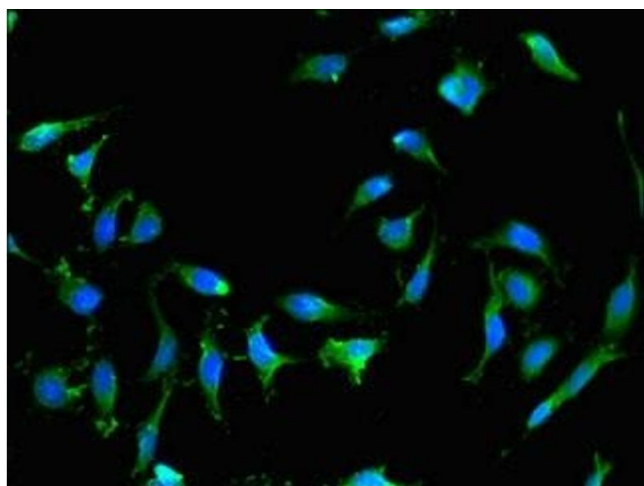
Immunohistochemistry

Image 1. Immunohistochemistry of paraffin-embedded human testis tissue using ABIN7167262 at dilution of 1:100



Western Blotting

Image 2. Western Blot Positive WB detected in: MCF-7 whole cell lysate, Mouse spleen tissue, Mouse lung tissue, Mouse brain tissue All lanes: RAB25 antibody at 4 µg/mL Secondary Goat polyclonal to rabbit IgG at 1/50000 dilution Predicted band size: 24 kDa Observed band size: 24 kDa



Immunofluorescence

Image 3. Immunofluorescent analysis of HeLa cells using ABIN7167262 at dilution of 1:100 and Alexa Fluor 488-conjugated AffiniPure Goat Anti-Rabbit IgG(H+L)