



[Go to Product page](#)

Datasheet for ABIN7167294
anti-RAB32 antibody (AA 2-225)

1 Image

Overview

Quantity:	100 µg
Target:	RAB32
Binding Specificity:	AA 2-225
Reactivity:	Human
Host:	Rabbit
Clonality:	Polyclonal
Conjugate:	This RAB32 antibody is un-conjugated
Application:	Western Blotting (WB), ELISA

Product Details

Immunogen:	Recombinant Human Ras-related protein Rab-32 protein (2-225AA)
Isotype:	IgG
Cross-Reactivity:	Human, Mouse
Purification:	>95%, Protein G purified

Target Details

Target:	RAB32
Alternative Name:	RAB32 (RAB32 Products)
Background:	Background: Acts as an A-kinase anchoring protein by binding to the type II regulatory subunit of protein kinase A and anchoring it to the mitochondrion. Also involved in synchronization of

Target Details

mitochondrial fission (PubMed:12186851). Plays a role in the maturation of phagosomes that engulf pathogens, such as S.aureus and M.tuberculosis (PubMed:21255211). Plays an important role in the control of melanin production and melanosome biogenesis (PubMed:23084991). In concert with RAB38, regulates the proper trafficking of melanogenic enzymes TYR, TYRP1 and DCT/TYRP2 to melanosomes in melanocytes (By similarity).
Aliases: RAB32 antibody, RAB32, member RAS oncogene family antibody, RAB32_HUMAN antibody, Ras related protein Rab32 antibody, Ras-related protein Rab-32 antibody

UniProt: [Q13637](#)

Application Details

Application Notes: Recommended dilution: WB:1:1000-1:5000,

Restrictions: For Research Use only

Handling

Format: Liquid

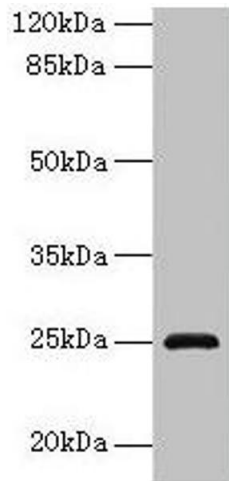
Buffer: Preservative: 0.03 % Proclin 300
Constituents: 50 % Glycerol, 0.01M PBS, PH 7.4

Preservative: ProClin

Precaution of Use: This product contains ProClin: a POISONOUS AND HAZARDOUS SUBSTANCE which should be handled by trained staff only.

Storage: -20 °C,-80 °C

Storage Comment: Upon receipt, store at -20°C or -80°C. Avoid repeated freeze.



Western Blotting

Image 1. Western blot All lanes: RAB32 antibody at 3 μ g/mL + Mouse kidney tissue Secondary Goat polyclonal to rabbit IgG at 1/10000 dilution Predicted band size: 25 kDa Observed band size: 25 kDa