

Datasheet for ABIN7167302
anti-RAB35 antibody (AA 1-201)

3 Images

[Go to Product page](#)

Overview

Quantity:	100 µg
Target:	RAB35
Binding Specificity:	AA 1-201
Reactivity:	Human
Host:	Rabbit
Clonality:	Polyclonal
Conjugate:	This RAB35 antibody is un-conjugated
Application:	ELISA, Immunohistochemistry (IHC), Immunofluorescence (IF)

Product Details

Immunogen:	Recombinant Human Ras-related protein Rab-35 protein (1-201AA)
Isotype:	IgG
Cross-Reactivity:	Human
Purification:	>95%, Protein G purified

Target Details

Target:	RAB35
Alternative Name:	RAB35 (RAB35 Products)
Background:	Background: The small GTPases Rab are key regulators of intracellular membrane trafficking, from the formation of transport vesicles to their fusion with membranes. Rabs cycle between

Target Details

an inactive GDP-bound form and an active GTP-bound form that is able to recruit to membranes different sets of downstream effectors directly responsible for vesicle formation, movement, tethering and fusion. That Rab is involved in the process of endocytosis and is an essential rate-limiting regulator of the fast recycling pathway back to the plasma membrane. During cytokinesis, required for the postfurling terminal steps, namely for intercellular bridge stability and abscission, possibly by controlling phosphatidylinositol 4,5-bis phosphate (PIP2) and SEPT2 localization at the intercellular bridge. May indirectly regulate neurite outgrowth. Together with TBC1D13 may be involved in regulation of insulin-induced glucose transporter SLC2A4/GLUT4 translocation to the plasma membrane in adipocytes.

Aliases: GTP binding protein RAY antibody, GTP-binding protein RAY antibody, H ray antibody, OTTHUMP00000240256 antibody, OTTHUMP00000240257 antibody, OTTHUMP00000240258 antibody, OTTHUMP00000240259 antibody, RAB1C antibody, Rab35 antibody, RAB35 member RAS oncogene family antibody, RAB35, member RAS oncogene family antibody, RAB35_HUMAN antibody, Ras related protein rab 1c (GTP binding protein ray) antibody, Ras related protein Rab 1C antibody, Ras related protein Rab35 antibody, Ras-related protein Rab-1C antibody, Ras-related protein Rab-35 antibody, RAY antibody

UniProt: [Q15286](#)

Application Details

Application Notes: Recommended dilution: IHC:1:200-1:500, IF:1:50-1:200,

Restrictions: For Research Use only

Handling

Format: Liquid

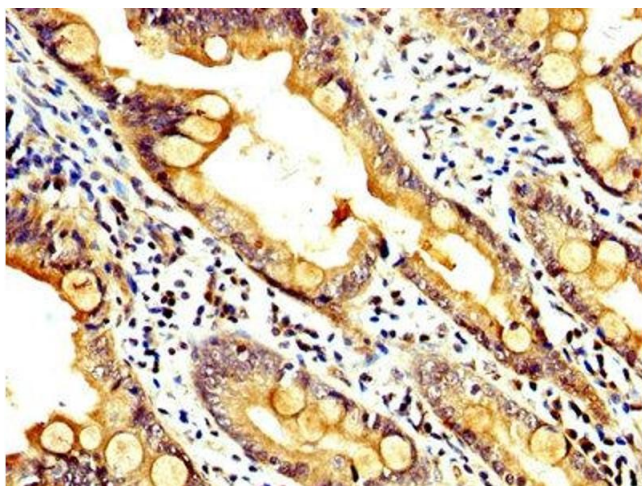
Buffer: Preservative: 0.03 % Proclin 300
Constituents: 50 % Glycerol, 0.01M PBS, PH 7.4

Preservative: ProClin

Precaution of Use: This product contains ProClin: a POISONOUS AND HAZARDOUS SUBSTANCE which should be handled by trained staff only.

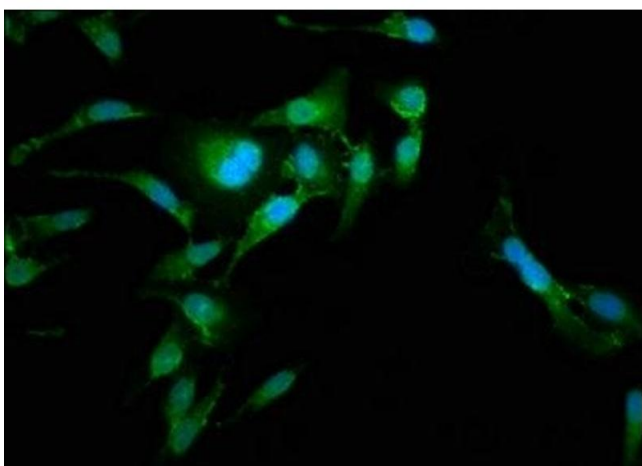
Storage: -20 °C,-80 °C

Storage Comment: Upon receipt, store at -20°C or -80°C. Avoid repeated freeze.



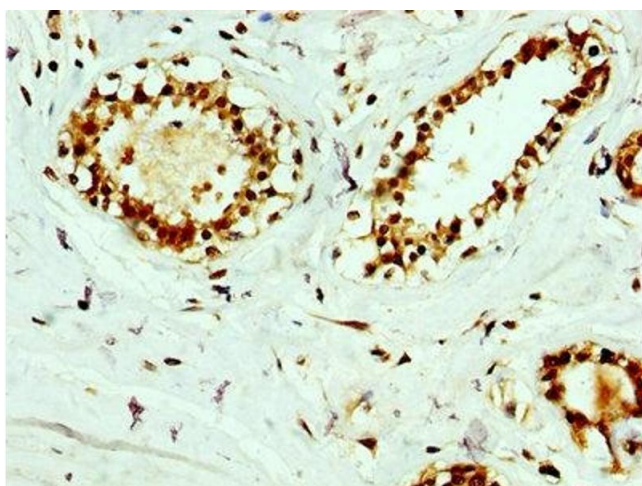
Immunohistochemistry

Image 1. IHC image of ABIN7167302 diluted at 1:400 and staining in paraffin-embedded human small intestine tissue performed on a Leica Bond™ system. After dewaxing and hydration, antigen retrieval was mediated by high pressure in a citrate buffer (pH 6.0). Section was blocked with 10% normal goat serum 30min at RT. Then primary antibody (1% BSA) was incubated at 4°C overnight. The primary is detected by a biotinylated secondary antibody and visualized using an HRP conjugated SP system.



Immunofluorescence

Image 2. Immunofluorescence staining of Hela cells with ABIN7167302 at 1:185, counter-stained with DAPI. The cells were fixed in 4% formaldehyde, permeabilized using 0.2% Triton X-100 and blocked in 10% normal Goat Serum. The cells were then incubated with the antibody overnight at 4°C. The secondary antibody was Alexa Fluor 488-conjugated AffiniPure Goat Anti-Rabbit IgG(H+L).



Immunohistochemistry

Image 3. IHC image of ABIN7167302 diluted at 1:400 and staining in paraffin-embedded human breast cancer performed on a Leica Bond™ system. After dewaxing and hydration, antigen retrieval was mediated by high pressure in a citrate buffer (pH 6.0). Section was blocked with 10% normal goat serum 30min at RT. Then primary antibody (1% BSA) was incubated at 4°C overnight. The primary is detected by a biotinylated secondary antibody and visualized using an HRP conjugated SP system.