



[Go to Product page](#)

Datasheet for ABIN7167373
anti-WTH3DI antibody (AA 1-254)

1 Image

Overview

Quantity:	100 µg
Target:	WTH3DI
Binding Specificity:	AA 1-254
Reactivity:	Human
Host:	Rabbit
Clonality:	Polyclonal
Conjugate:	This WTH3DI antibody is un-conjugated
Application:	ELISA, Immunohistochemistry (IHC)

Product Details

Immunogen:	Recombinant Human Ras-related protein Rab-6C protein (1-254AA)
Isotype:	IgG
Cross-Reactivity:	Human
Purification:	>95%, Protein G purified

Target Details

Target:	WTH3DI
Alternative Name:	RAB6C (WTH3DI Products)
Background:	Background: May be involved in the regulation of centrosome duplication and cell cycle progression.

Target Details

Aliases: RAB 6C antibody, Rab6 like protein WTH3 antibody, Rab6-like protein WTH3 antibody, RAB6C antibody, RAB6C member RAS oncogene family antibody, RAB6C_HUMAN antibody, Ras related protein Rab 6C antibody, Ras-related protein Rab-6C antibody, WTH3 antibody

UniProt: [Q9H0N0](#)

Application Details

Application Notes: Recommended dilution: IHC:1:20-1:200,

Restrictions: For Research Use only

Handling

Format: Liquid

Buffer: Preservative: 0.03 % Proclin 300
Constituents: 50 % Glycerol, 0.01M PBS, PH 7.4

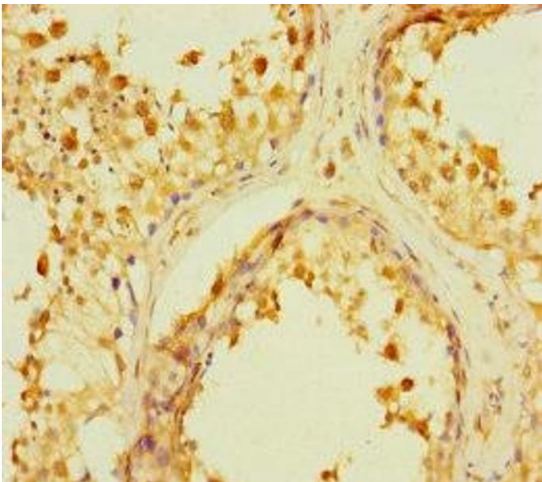
Preservative: ProClin

Precaution of Use: This product contains ProClin: a POISONOUS AND HAZARDOUS SUBSTANCE which should be handled by trained staff only.

Storage: -20 °C,-80 °C

Storage Comment: Upon receipt, store at -20°C or -80°C. Avoid repeated freeze.

Images



Immunohistochemistry

Image 1. Immunohistochemistry of paraffin-embedded human testis tissue using ABIN7167373 at dilution of 1:100