

Datasheet for ABIN7167390
anti-rala antibody (AA 1-203)[Go to Product page](#)

2 Images

Overview

Quantity:	100 µg
Target:	rala
Binding Specificity:	AA 1-203
Reactivity:	Human
Host:	Rabbit
Clonality:	Polyclonal
Conjugate:	This rala antibody is un-conjugated
Application:	ELISA, Immunohistochemistry (IHC), Immunofluorescence (IF)

Product Details

Immunogen:	Recombinant Human Ras-related protein Ral-A protein (1-203AA)
Isotype:	IgG
Cross-Reactivity:	Human
Purification:	>95%, Protein G purified

Target Details

Target:	rala
Alternative Name:	RALA (rala Products)
Background:	Background: Multifunctional GTPase involved in a variety of cellular processes including gene expression, cell migration, cell proliferation, oncogenic transformation and membrane

Target Details

trafficking. Accomplishes its multiple functions by interacting with distinct downstream effectors. Acts as a GTP sensor for GTP-dependent exocytosis of dense core vesicles. Plays a role in the early stages of cytokinesis and is required to tether the exocyst to the cytokinetic furrow. The RALA-exocyst complex regulates integrin-dependent membrane raft exocytosis and growth signaling. Key regulator of LPAR1 signaling and competes with GRK2 for binding to LPAR1 thus affecting the signaling properties of the receptor. Required for anchorage-independent proliferation of transformed cells.

Aliases: MGC48949 antibody, Ral a antibody, Ral A protein antibody, RAL antibody, RALA antibody, RALA_HUMAN antibody, Ras family small GTP binding protein RALA antibody, RAS like protein A antibody, Ras related protein RalA antibody, Ras-related protein Ral-A antibody, v ral simian leukemia viral oncogene homolog A (ras related) antibody, v ral simian leukemia viral oncogene homolog A antibody

UniProt: [P11233](#)

Pathways: [Neurotrophin Signaling Pathway](#), [SARS-CoV-2 Protein Interactome](#)

Application Details

Application Notes: Recommended dilution: IHC:1:20-1:200, IF:1:20-1:200,

Restrictions: For Research Use only

Handling

Format: Liquid

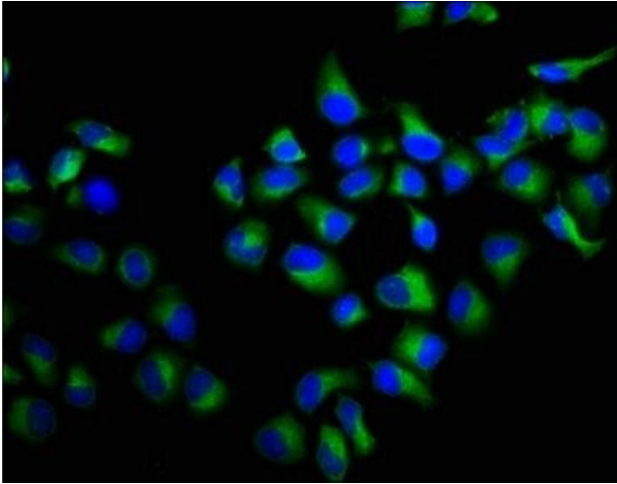
Buffer: Preservative: 0.03 % Proclin 300
Constituents: 50 % Glycerol, 0.01M PBS, pH 7.4

Preservative: ProClin

Precaution of Use: This product contains ProClin: a POISONOUS AND HAZARDOUS SUBSTANCE which should be handled by trained staff only.

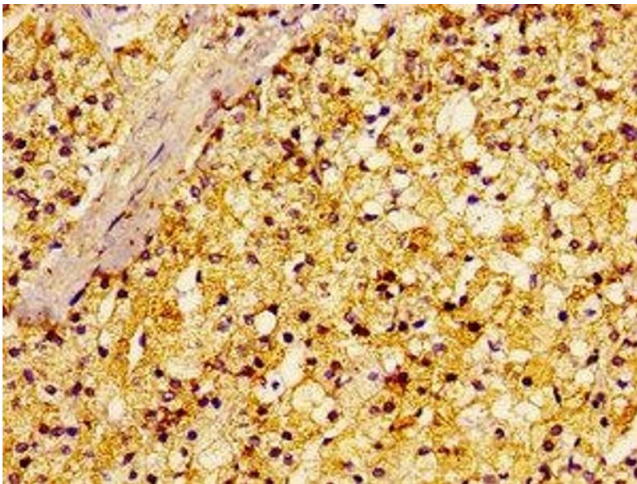
Storage: -20 °C, -80 °C

Storage Comment: Upon receipt, store at -20°C or -80°C. Avoid repeated freeze.



Immunofluorescence

Image 1. Immunofluorescence staining of HeLa cells with ABIN7167390 at 1:100, counter-stained with DAPI. The cells were fixed in 4% formaldehyde, permeabilized using 0.2% Triton X-100 and blocked in 10% normal Goat Serum. The cells were then incubated with the antibody overnight at 4°C. The secondary antibody was Alexa Fluor 488-conjugated AffiniPure Goat Anti-Rabbit IgG(H+L).



Immunohistochemistry

Image 2. Immunohistochemistry of paraffin-embedded human adrenal gland tissue using ABIN7167390 at dilution of 1:100