

Datasheet for ABIN7167395  
**anti-RAP1A antibody (AA 1-181)**

## 3 Images

[Go to Product page](#)

## Overview

Quantity:	100 µg
Target:	RAP1A
Binding Specificity:	AA 1-181
Reactivity:	Human
Host:	Rabbit
Clonality:	Polyclonal
Conjugate:	This RAP1A antibody is un-conjugated
Application:	ELISA, Immunohistochemistry (IHC), Immunofluorescence (IF)

## Product Details

Immunogen:	Recombinant Human Ras-related protein Rap-1A protein (1-181AA)
Isotype:	IgG
Cross-Reactivity:	Human
Purification:	>95%, Protein G purified

## Target Details

Target:	RAP1A
Alternative Name:	RAP1A ( <a href="#">RAP1A Products</a> )
Background:	Background: Induces morphological reversion of a cell line transformed by a Ras oncogene. Counteracts the mitogenic function of Ras, at least partly because it can interact with Ras GAPs

## Target Details

and RAF in a competitive manner. Together with ITGB1BP1, regulates KRIT1 localization to microtubules and membranes. Plays a role in nerve growth factor (NGF)-induced neurite outgrowth. Plays a role in the regulation of embryonic blood vessel formation. Involved in the establishment of basal endothelial barrier function. May be involved in the regulation of the vascular endothelial growth factor receptor KDR expression at endothelial cell-cell junctions. Aliases: C21KG antibody, G 22K antibody, G-22K antibody, GTP binding protein smg p21A antibody, GTP-binding protein smg p21A antibody, KREV 1 antibody, KREV1 antibody, OTTHUMP00000013741 antibody, RAP 1A antibody, RAP1 antibody, RAP1A antibody, RAP1A member of RAS oncogene family antibody, RAP1A\_HUMAN antibody, Ras related protein Krev 1 antibody, Ras related protein Rap 1A antibody, RAS related protein RAP1A antibody, Ras-related protein Krev-1 antibody, Ras-related protein Rap-1A antibody, SMGP21 antibody

UniProt: [P62834](#)

Pathways: [TCR Signaling](#), [Neurotrophin Signaling Pathway](#), [Signaling of Hepatocyte Growth Factor Receptor](#)

## Application Details

Application Notes: Recommended dilution: IHC:1:20-1:200, IF:1:50-1:500,

Restrictions: For Research Use only

## Handling

Format: Liquid

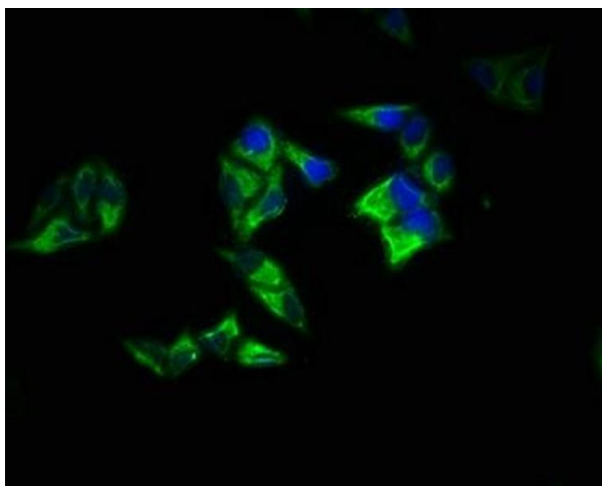
Buffer: Preservative: 0.03 % Proclin 300  
Constituents: 50 % Glycerol, 0.01M PBS, PH 7.4

Preservative: ProClin

Precaution of Use: This product contains ProClin: a POISONOUS AND HAZARDOUS SUBSTANCE which should be handled by trained staff only.

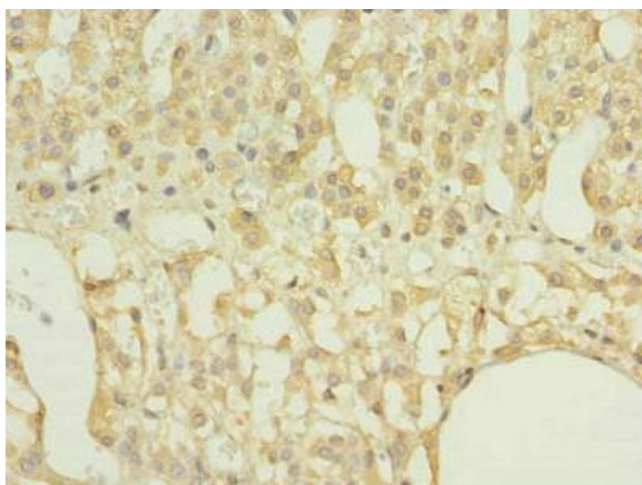
Storage: -20 °C,-80 °C

Storage Comment: Upon receipt, store at -20°C or -80°C. Avoid repeated freeze.



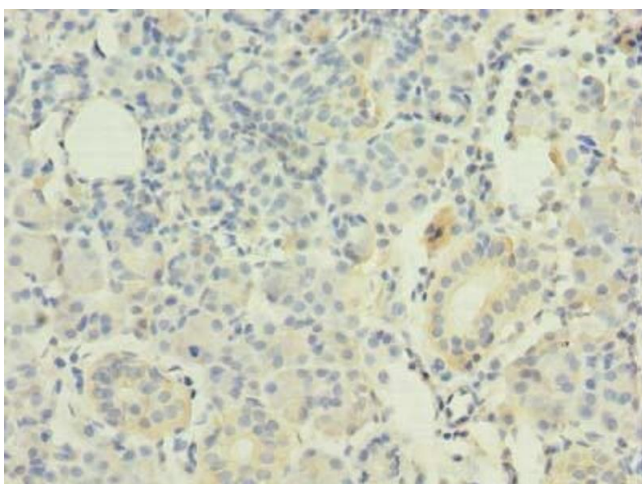
#### Immunofluorescence

**Image 1.** Immunofluorescence staining of Hela cells with ABIN7167395 at 1:200, counter-stained with DAPI. The cells were fixed in 4% formaldehyde, permeabilized using 0.2% Triton X-100 and blocked in 10% normal Goat Serum. The cells were then incubated with the antibody overnight at 4°C. The secondary antibody was Alexa Fluor 488-conjugated AffiniPure Goat Anti-Rabbit IgG(H+L).



#### Immunohistochemistry

**Image 2.** Immunohistochemistry of paraffin-embedded human adrenal gland tissue using ABIN7167395 at dilution of 1:100



#### Immunohistochemistry

**Image 3.** Immunohistochemistry of paraffin-embedded human pancreatic tissue using ABIN7167395 at dilution of 1:100