

Datasheet for ABIN7167399
anti-RAP1B antibody (AA 1-181)

2 Images

[Go to Product page](#)

Overview

Quantity:	100 µg
Target:	RAP1B
Binding Specificity:	AA 1-181
Reactivity:	Human
Host:	Rabbit
Clonality:	Polyclonal
Conjugate:	This RAP1B antibody is un-conjugated
Application:	Western Blotting (WB), ELISA, Immunohistochemistry (IHC)

Product Details

Immunogen:	Recombinant Human Ras-related protein Rap-1b protein (1-181AA)
Isotype:	IgG
Cross-Reactivity:	Human, Mouse
Purification:	Antigen Affinity Purified

Target Details

Target:	RAP1B
Alternative Name:	RAP1B (RAP1B Products)
Background:	Background: GTP-binding protein that possesses intrinsic GTPase activity. Contributes to the polarizing activity of KRIT1 and CDH5 in the establishment and maintenance of correct

Target Details

endothelial cell polarity and vascular lumen. Required for the localization of phosphorylated PRKCZ, PARD3 and TIAM1 to the cell junction. Plays a role in the establishment of basal endothelial barrier function.

Aliases: GTP-binding protein smg p21B antibody, K-REV antibody, OK/SW-cl.11 antibody, RAL1B antibody, rap1b antibody, RAP1B member of RAS oncogene family antibody, RAP1B_HUMAN antibody, Ras family small GTP binding protein RAP1B antibody, RAS related protein RAP1B antibody, Ras-related protein Rap-1b antibody, Small GTP binding protein antibody

UniProt: [P61224](#)

Pathways: [CXCR4-mediated Signaling Events](#), [Signaling of Hepatocyte Growth Factor Receptor](#)

Application Details

Application Notes: Recommended dilution: WB:1:500-1:2000, IHC:1:20-1:200,

Restrictions: For Research Use only

Handling

Format: Liquid

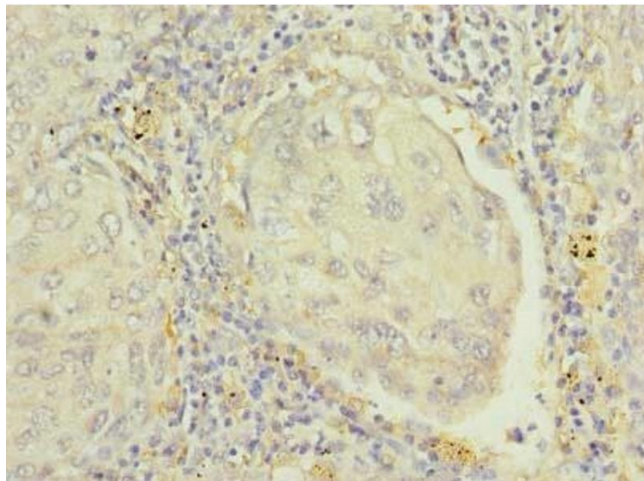
Buffer: Preservative: 0.03 % Proclin 300
Constituents: 50 % Glycerol, 0.01M PBS, PH 7.4

Preservative: ProClin

Precaution of Use: This product contains ProClin: a POISONOUS AND HAZARDOUS SUBSTANCE which should be handled by trained staff only.

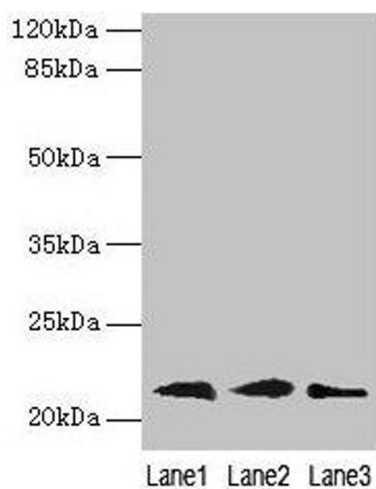
Storage: -20 °C,-80 °C

Storage Comment: Upon receipt, store at -20°C or -80°C. Avoid repeated freeze.



Immunohistochemistry

Image 1. Immunohistochemistry of paraffin-embedded human lung cancer using ABIN7167399 at dilution of 1:100



Western Blotting

Image 2. Western blot All lanes: RAP1B antibody at 0.7 μ g/mL Lane 1: Mouse brain tissue Lane 2: A549 whole cell lysate Lane 3: A431 whole cell lysate Secondary Goat polyclonal to rabbit IgG at 1/10000 dilution Predicted band size: 21, 16, 19, 17 kDa Observed band size: 21 kDa