

Datasheet for ABIN7167413
anti-RASAL1 antibody (AA 698-804)



[Go to Product page](#)

1 Image

Overview

Quantity:	100 µg
Target:	RASAL1
Binding Specificity:	AA 698-804
Reactivity:	Human
Host:	Rabbit
Clonality:	Polyclonal
Conjugate:	This RASAL1 antibody is un-conjugated
Application:	ELISA, Immunofluorescence (IF)

Product Details

Immunogen:	Recombinant Human RasGAP-activating-like protein 1 protein (698-804AA)
Isotype:	IgG
Cross-Reactivity:	Human
Purification:	>95%, Protein G purified

Target Details

Target:	RASAL1
Alternative Name:	RASAL1 (RASAL1 Products)
Background:	Background: Probable inhibitory regulator of the Ras-cyclic AMP pathway (PubMed:9751798). Plays a role in dendrite formation by melanocytes (PubMed:23999003).

Target Details

Aliases: GAP1 like protein antibody, MRASAL antibody, RAS GTPase activating protein like antibody, RAS protein activator like 1 (GAP1 like) antibody, RAS protein activator like 1 antibody, RASAL antibody, Rasal1 antibody, rasGAP activating like protein 1 antibody, RasGAP-activating-like protein 1 antibody, RASGAP1 LIKE antibody, RASL1_HUMAN antibody

UniProt: [095294](#)

Application Details

Application Notes: Recommended dilution: IF:1:50-1:200,

Restrictions: For Research Use only

Handling

Format: Liquid

Buffer: Preservative: 0.03 % Proclin 300
Constituents: 50 % Glycerol, 0.01M PBS, pH 7.4

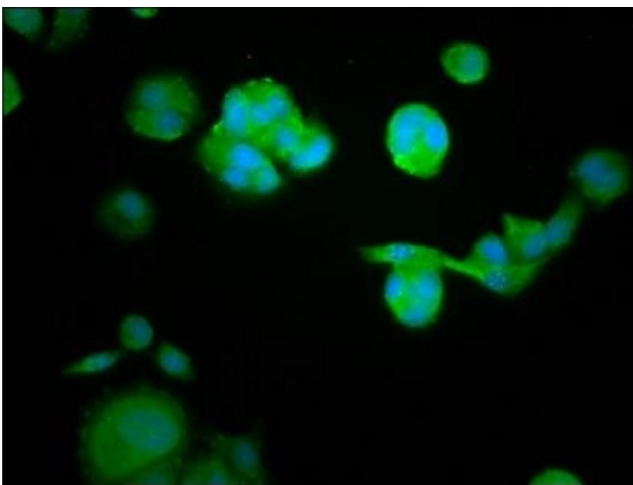
Preservative: ProClin

Precaution of Use: This product contains ProClin: a POISONOUS AND HAZARDOUS SUBSTANCE which should be handled by trained staff only.

Storage: -20 °C,-80 °C

Storage Comment: Upon receipt, store at -20°C or -80°C. Avoid repeated freeze.

Images



Immunofluorescence

Image 1. Immunofluorescence staining of MCF-7 cells with ABIN7167413 at 1:105, counter-stained with DAPI. The cells were fixed in 4% formaldehyde, permeabilized using 0.2% Triton X-100 and blocked in 10% normal Goat Serum. The cells were then incubated with the antibody overnight at 4°C. The secondary antibody was Alexa Fluor 488-conjugated AffiniPure Goat Anti-Rabbit IgG(H+L).