

Datasheet for ABIN7167500
anti-PTPRA antibody (AA 20-142)[Go to Product page](#)

2 Images

Overview

Quantity:	100 µL
Target:	PTPRA
Binding Specificity:	AA 20-142
Reactivity:	Human
Host:	Rabbit
Clonality:	Polyclonal
Conjugate:	This PTPRA antibody is un-conjugated
Application:	ELISA, Immunohistochemistry (IHC)

Product Details

Immunogen:	Recombinant Human Receptor-type tyrosine-protein phosphatase alpha protein (20-142AA)
Isotype:	IgG
Cross-Reactivity:	Human
Purification:	Antigen Affinity Purified

Target Details

Target:	PTPRA
Alternative Name:	PTPRA (PTPRA Products)
Background:	Background: The protein encoded by this gene is a member of the protein tyrosine phosphatase (PTP) family. PTPs are known to be signaling molecules that regulate a variety of cellular

Target Details

processes including cell growth, differentiation, mitotic cycle, and oncogenic transformation.

This PTP contains an extracellular domain, a single transmembrane segment and two tandem intracytoplasmic catalytic domains, and thus represents a receptor-type PTP. This PTP has been shown to dephosphorylate and activate Src family tyrosine kinases, and is implicated in the regulation of integrin signaling, cell adhesion and proliferation. Three alternatively spliced variants of this gene, which encode two distinct isoforms, have been reported.

Aliases: HEPTP antibody, HLPR antibody, HPTP alpha antibody, HPTPA antibody, HPTPalpha antibody, Leukocyte common antigen related peptide antibody, LRP antibody, Protein tyrosine phosphatase alpha antibody, Protein tyrosine phosphatase receptor type A antibody, Protein tyrosine phosphatase receptor type alpha polypeptide antibody, Protein tyrosine phosphate antibody, Protein-tyrosine phosphatase alpha antibody, PTPA antibody, PTPalpha antibody, PTPase alpha antibody, PTPLCA related phosphatase antibody, Ptpa antibody, PTPRA_HUMAN antibody, PTPRL 2 antibody, PTPRL2 antibody, PTRa antibody, R PTP alpha antibody, R-PTP-alpha antibody, Receptor type tyrosine protein phosphatase alpha antibody, Receptor-type tyrosine-protein phosphatase alpha antibody, RPTPA antibody, Tyrosine phosphatase alpha antibody

UniProt: [P18433](#)

Application Details

Application Notes: Recommended dilution: IHC:1:20-1:200,

Restrictions: For Research Use only

Handling

Format: Liquid

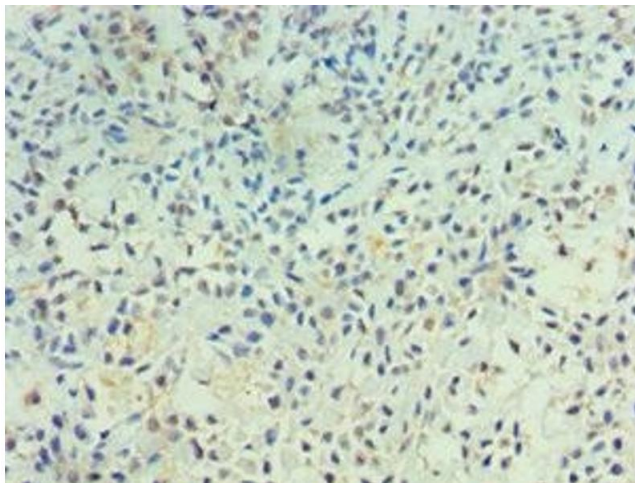
Buffer: PBS with 0.02 % sodium azide, 50 % glycerol, pH 7.3.

Preservative: Sodium azide

Precaution of Use: This product contains Sodium azide: a POISONOUS AND HAZARDOUS SUBSTANCE which should be handled by trained staff only.

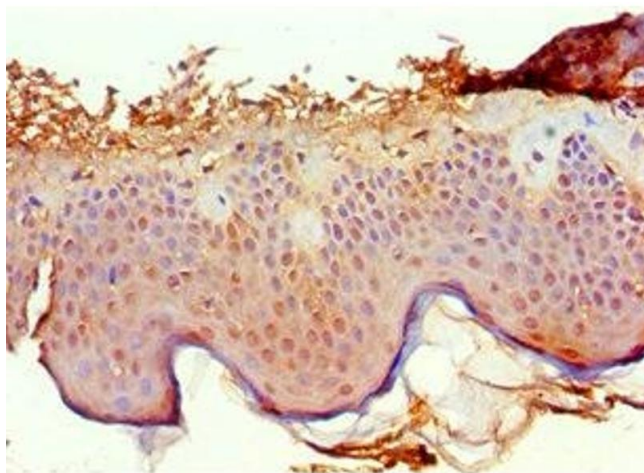
Storage: -20 °C, -80 °C

Storage Comment: Upon receipt, store at -20°C or -80°C. Avoid repeated freeze.



Immunohistochemistry

Image 1. Immunohistochemistry of paraffin-embedded human breast cancer using ABIN7167500 at dilution of 1:100



Immunohistochemistry

Image 2. Immunohistochemistry of paraffin-embedded human skin tissue using ABIN7167500 at dilution of 1:100