

Datasheet for ABIN7167503

anti-PTPRE antibody

3 Images

[Go to Product page](#)

Overview

Quantity:	100 µL
Target:	PTPRE
Reactivity:	Human
Host:	Rabbit
Clonality:	Polyclonal
Conjugate:	This PTPRE antibody is un-conjugated
Application:	Western Blotting (WB), Immunohistochemistry (IHC), ELISA

Product Details

Immunogen:	Recombinant Human Receptor-type tyrosine-protein phosphatase epsilon protein
Isotype:	IgG
Cross-Reactivity:	Human, Mouse
Purification:	Antigen Affinity Purified

Target Details

Target:	PTPRE
Alternative Name:	PTPRE (PTPRE Products)
Background:	Background: Isoform 1 plays a critical role in signaling transduction pathways and phosphoprotein network topology in red blood cells. May play a role in osteoclast formation and function (By similarity). Isoform 2 acts as a negative regulator of insulin receptor (IR) signaling in skeletal muscle. Regulates insulin-induced tyrosine phosphorylation of insulin receptor (IR)

Target Details

and insulin receptor substrate 1 (IRS-1), phosphorylation of protein kinase B and glycogen synthase kinase-3 and insulin induced stimulation of glucose uptake. Isoform 1 and isoform 2 act as a negative regulator of FcεRI-mediated signal transduction leading to cytokine production and degranulation, most likely by acting at the level of SYK to affect downstream events such as phosphorylation of SLP76 and LAT and mobilization of Ca²⁺.

Aliases: DKFZp313F1310 antibody, FLJ57799 antibody, FLJ58245 antibody, HPTPE antibody, Protein tyrosine phosphatase epsilon antibody, Protein tyrosine phosphatase receptor type E antibody, Protein tyrosine phosphatase receptor type epsilon antibody, Protein tyrosine phosphatase receptor type epsilon polypeptide antibody, Protein-tyrosine phosphatase epsilon antibody, PTPE antibody, Ptpre antibody, PTPRE_HUMAN antibody, R PTP Epsilon antibody, R-PTP-epsilon antibody, Receptor-type tyrosine-protein phosphatase epsilon antibody

UniProt: [P23469](#)

Application Details

Application Notes: Recommended dilution: WB:1:1000-1:5000, IHC:1:20-1:200,

Restrictions: For Research Use only

Handling

Format: Liquid

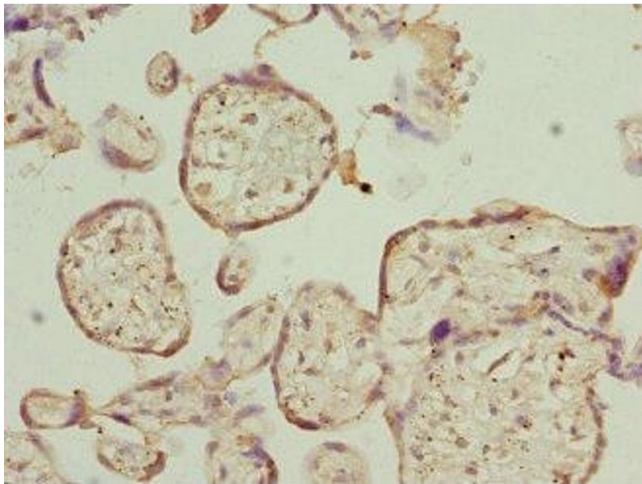
Buffer: PBS with 0.02 % sodium azide, 50 % glycerol, pH 7.3.

Preservative: Sodium azide

Precaution of Use: This product contains Sodium azide: a POISONOUS AND HAZARDOUS SUBSTANCE which should be handled by trained staff only.

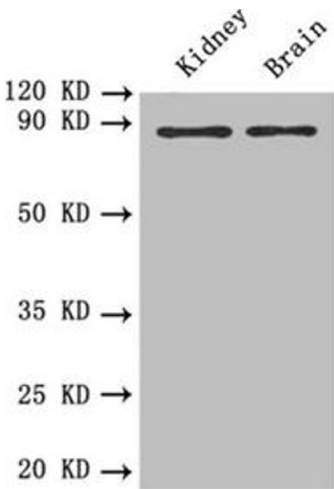
Storage: -20 °C, -80 °C

Storage Comment: Upon receipt, store at -20°C or -80°C. Avoid repeated freeze.



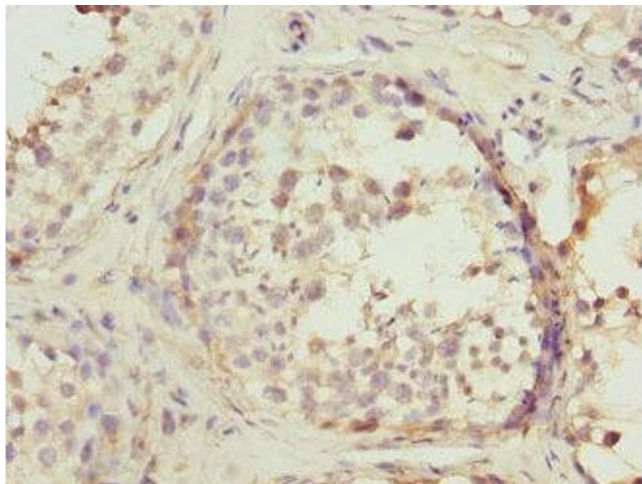
Immunohistochemistry

Image 1. Immunohistochemistry of paraffin-embedded human placenta tissue using ABIN7167503 at dilution of 1:100



Western Blotting

Image 2. Western blot All lanes: PTPRE antibody at 0.6 μ g/mL Lane 1: Mouse kidney tissue Lane 2: Mouse brain tissue Secondary Goat polyclonal to rabbit IgG at 1/10000 dilution Predicted band size: 81, 75, 72 kDa Observed band size: 81 kDa



Immunohistochemistry

Image 3. Immunohistochemistry of paraffin-embedded human testis tissue using ABIN7167503 at dilution of 1:100