

Datasheet for ABIN7167505
anti-PTPRF antibody (AA 688-970)[Go to Product page](#)

3 Images

Overview

Quantity:	100 µg
Target:	PTPRF
Binding Specificity:	AA 688-970
Reactivity:	Human
Host:	Rabbit
Clonality:	Polyclonal
Conjugate:	This PTPRF antibody is un-conjugated
Application:	ELISA, Immunohistochemistry (IHC), Immunofluorescence (IF)

Product Details

Immunogen:	Recombinant Human Receptor-type tyrosine-protein phosphatase F protein (688-970AA)
Isotype:	IgG
Cross-Reactivity:	Human
Purification:	>95%, Protein G purified

Target Details

Target:	PTPRF
Alternative Name:	PTPRF (PTPRF Products)
Background:	Background: Possible cell adhesion receptor. It possesses an intrinsic protein tyrosine phosphatase activity (PTPase) and dephosphorylates EPHA2 regulating its activity.

Target Details

Aliases: FLJ43335 antibody, FLJ45062 antibody, FLJ45567 antibody, LAR antibody, LAR protein antibody, LARFN5C antibody, LARS antibody, LCA homolog antibody, Leukocyte antigen related (LAR) PTP receptor antibody, Leukocyte antigen related antibody, Leukocyte antigen related PTP receptor antibody, Leukocyte antigen related tyrosine phosphatase antibody, Leukocyte common antigen related antibody, Protein Tyrosine Phosphatase Receptor Type F antibody, Protein tyrosine phosphatase receptor type F polypeptide antibody, Ptprf antibody, PTPRF protein antibody, PTPRF_HUMAN antibody, Receptor linked protein tyrosine phosphatase LAR antibody, Receptor type tyrosine protein phosphatase F antibody, Receptor type tyrosine protein phosphatase F precursor antibody, Receptor-type tyrosine-protein phosphatase F antibody

UniProt: [P10586](#)

Pathways: [EGFR Signaling Pathway](#)

Application Details

Application Notes: Recommended dilution: IHC:1:20-1:200, IF:1:50-1:200,

Restrictions: For Research Use only

Handling

Format: Liquid

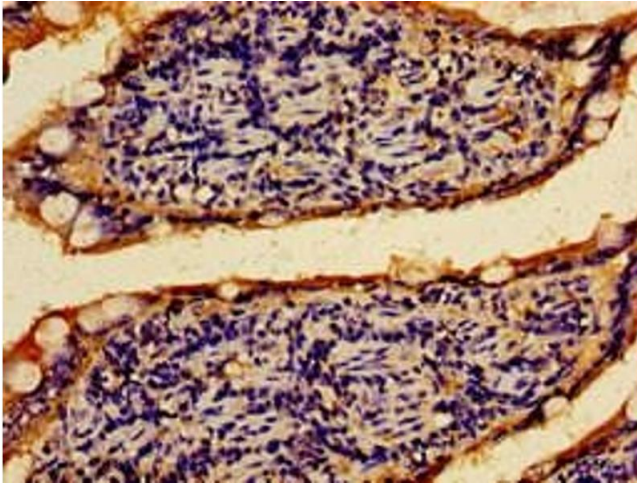
Buffer: Preservative: 0.03 % Proclin 300
Constituents: 50 % Glycerol, 0.01M PBS, pH 7.4

Preservative: ProClin

Precaution of Use: This product contains ProClin: a POISONOUS AND HAZARDOUS SUBSTANCE which should be handled by trained staff only.

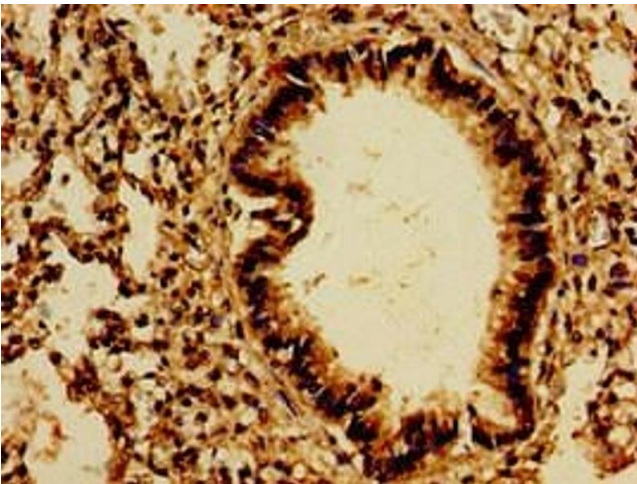
Storage: -20 °C,-80 °C

Storage Comment: Upon receipt, store at -20°C or -80°C. Avoid repeated freeze.



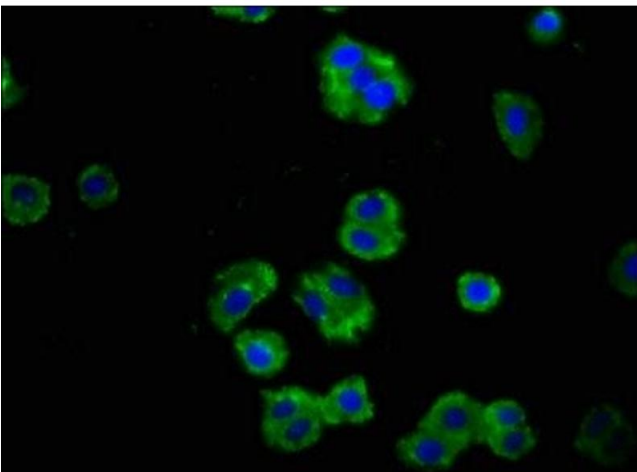
Immunohistochemistry

Image 1. Immunohistochemistry of paraffin-embedded human small intestine tissue using ABIN7167505 at dilution of 1:100



Immunohistochemistry

Image 2. Immunohistochemistry of paraffin-embedded human lung tissue using ABIN7167505 at dilution of 1:100



Immunofluorescence

Image 3. Immunofluorescence staining of HepG2 cells with ABIN7167505 at 1:100, counter-stained with DAPI. The cells were fixed in 4% formaldehyde, permeabilized using 0.2% Triton X-100 and blocked in 10% normal Goat Serum. The cells were then incubated with the antibody overnight at 4°C. The secondary antibody was Alexa Fluor 488-conjugated AffiniPure Goat Anti-Rabbit IgG(H+L).