

Datasheet for ABIN7167534
anti-RBPJ antibody (AA 243-485)[Go to Product page](#)

3 Images

Overview

Quantity:	100 µg
Target:	RBPJ
Binding Specificity:	AA 243-485
Reactivity:	Human
Host:	Rabbit
Clonality:	Polyclonal
Conjugate:	This RBPJ antibody is un-conjugated
Application:	Western Blotting (WB), Immunohistochemistry (IHC), ELISA, Immunofluorescence (IF)

Product Details

Immunogen:	Recombinant Human Recombining binding protein suppressor of hairless protein (243-485AA)
Isotype:	IgG
Cross-Reactivity:	Human, Mouse
Purification:	>95%, Protein G purified

Target Details

Target:	RBPJ
Alternative Name:	RBPJ (RBPJ Products)
Background:	Background: Transcriptional regulator that plays a central role in Notch signaling, a signaling pathway involved in cell-cell communication that regulates a broad spectrum of cell-fate

Target Details

determinations. Acts as a transcriptional repressor when it is not associated with Notch proteins. When associated with some NICD product of Notch proteins (Notch intracellular domain), it acts as a transcriptional activator that activates transcription of Notch target genes. Probably represses or activates transcription via the recruitment of chromatin remodeling complexes containing histone deacetylase or histone acetylase proteins, respectively. Specifically binds to the immunoglobulin kappa-type J segment recombination signal sequence. Binds specifically to methylated DNA. Binds to the oxygen responsive element of COX4I2 and activates its transcription under hypoxia conditions (4 % oxygen) (PubMed:23303788).

Aliases: AI843960 antibody, AOS3 antibody, CBF 1 antibody, CBF-1 antibody, CBF1 antibody, csl antibody, IGKJRB antibody, IGKJRB1 antibody, J kappa recombination signal binding protein antibody, J kappa-recombination signal-binding protein antibody, KBF2 antibody, NY REN 30 antigen antibody, RBP J antibody, RBP J kappa antibody, RBP JK antibody, RBP-J antibody, RBP-J kappa antibody, RBP-JK antibody, Rbpj antibody, RBPJK antibody, RBPSUH antibody, recombination signal binding protein for immunoglobulin kappa J region antibody, Recombining binding protein suppressor of hairless antibody, Renal carcinoma antigen NY-REN-30 antibody, SUH antibody, SUH_HUMAN antibody

UniProt: [Q06330](#)

Pathways: [Notch Signaling](#), [Stem Cell Maintenance](#), [Smooth Muscle Cell Migration](#)

Application Details

Application Notes: Recommended dilution: WB:1:2000-1:5000, IHC:1:20-1:200, IF:1:50-1:200,

Restrictions: For Research Use only

Handling

Format: Liquid

Buffer: Preservative: 0.03 % Proclin 300
Constituents: 50 % Glycerol, 0.01M PBS, PH 7.4

Preservative: ProClin

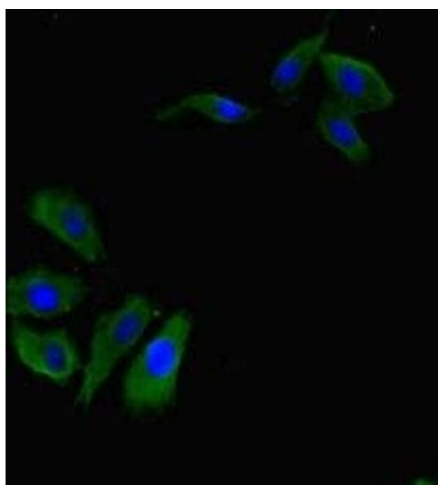
Precaution of Use: This product contains ProClin: a POISONOUS AND HAZARDOUS SUBSTANCE which should be handled by trained staff only.

Storage: -20 °C,-80 °C

Handling

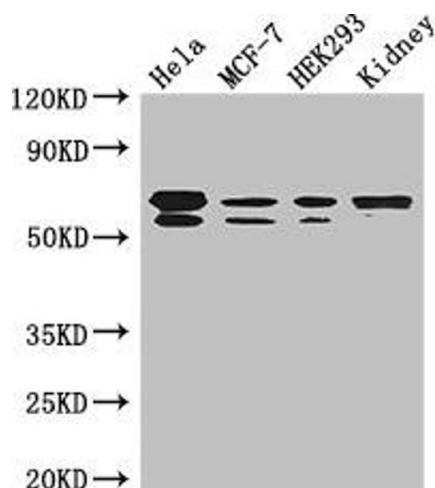
Storage Comment: Upon receipt, store at -20°C or -80°C. Avoid repeated freeze.

Images



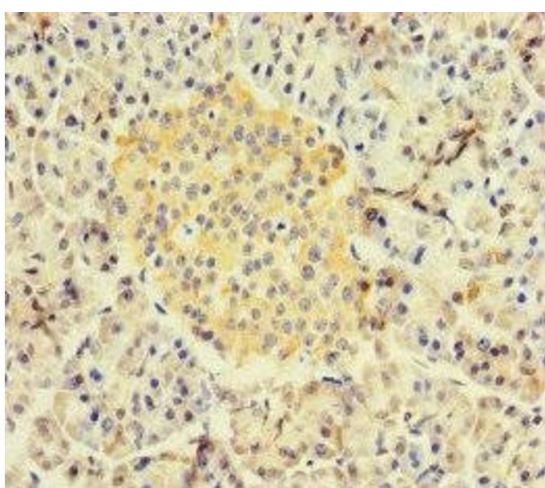
Immunofluorescence

Image 1. Immunofluorescent analysis of HeLa cells using ABIN7167534 at dilution of 1:100 and Alexa Fluor 488-conjugated AffiniPure Goat Anti-Rabbit IgG(H+L)



Western Blotting

Image 2. Western Blot Positive WB detected in: HeLa whole cell lysate, MCF-7 whole cell lysate, HEK293 whole cell lysate, Mouse kidney tissue All lanes: RBPJ antibody at 3.5 µg/mL Secondary Goat polyclonal to rabbit IgG at 1/50000 dilution Predicted band size: 56, 48, 46, 55, 52 kDa Observed band size: 56, 55 kDa



Immunohistochemistry

Image 3. Immunohistochemistry of paraffin-embedded human pancreatic tissue using ABIN7167534 at dilution of 1:100