

Datasheet for ABIN7167542
anti-Recoverin antibody (AA 2-200)[Go to Product page](#)

1 Image

Overview

Quantity:	100 µg
Target:	Recoverin (RCVRN)
Binding Specificity:	AA 2-200
Reactivity:	Human
Host:	Rabbit
Clonality:	Polyclonal
Conjugate:	This Recoverin antibody is un-conjugated
Application:	Western Blotting (WB), ELISA

Product Details

Immunogen:	Recombinant Human Recoverin protein (2-200AA)
Isotype:	IgG
Cross-Reactivity:	Human, Mouse
Purification:	>95%, Protein G purified

Target Details

Target:	Recoverin (RCVRN)
Alternative Name:	RCVRN (RCVRN Products)
Background:	Background: Seems to be implicated in the pathway from retinal rod guanylate cyclase to rhodopsin. May be involved in the inhibition of the phosphorylation of rhodopsin in a calcium-

Target Details

dependent manner. The calcium-bound recoverin prolongs the photoresponse.

Aliases: 23 kDa photoreceptor cell-specific protein antibody, Cancer associated retinopathy protein antibody, Cancer-associated retinopathy protein antibody, CAR antibody, CAR protein antibody, p26 antibody, Protein CAR antibody, RCV1 antibody, RCVRN antibody, RECO_HUMAN antibody, Recoverin antibody, S-modulin antibody

UniProt: [P35243](#)

Pathways: [Regulation of G-Protein Coupled Receptor Protein Signaling](#), [Phototransduction](#)

Application Details

Application Notes: Recommended dilution: WB:1:1000-1:5000,

Restrictions: For Research Use only

Handling

Format: Liquid

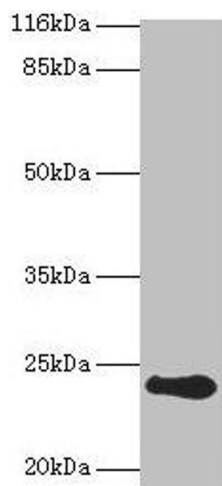
Buffer: Preservative: 0.03 % Proclin 300
Constituents: 50 % Glycerol, 0.01M PBS, PH 7.4

Preservative: ProClin

Precaution of Use: This product contains ProClin: a POISONOUS AND HAZARDOUS SUBSTANCE which should be handled by trained staff only.

Storage: -20 °C,-80 °C

Storage Comment: Upon receipt, store at -20°C or -80°C. Avoid repeated freeze.



Western Blotting

Image 1. Western blot All lanes: RCVRN antibody at 2 μ g/mL + Mouse eye tissue Secondary Goat polyclonal to rabbit IgG at 1/10000 dilution Predicted band size: 24 kDa
Observed band size: 24 kDa