

Datasheet for ABIN7167546  
**anti-RMI1 antibody (AA 181-443)**[Go to Product page](#)

## 1 Image

## Overview

Quantity:	100 µg
Target:	RMI1
Binding Specificity:	AA 181-443
Reactivity:	Human
Host:	Rabbit
Clonality:	Polyclonal
Conjugate:	This RMI1 antibody is un-conjugated
Application:	Western Blotting (WB), ELISA

## Product Details

Immunogen:	Recombinant Human RecQ-mediated genome instability protein 1 protein (181-443AA)
Isotype:	IgG
Cross-Reactivity:	Human, Mouse
Purification:	>95%, Protein G purified

## Target Details

Target:	RMI1
Alternative Name:	RMI1 ( <a href="#">RMI1 Products</a> )
Background:	Background: Essential component of the RMI complex, a complex that plays an important role in the processing of homologous recombination intermediates to limit DNA crossover

## Target Details

formation in cells. Promotes TOP3A binding to double Holliday junctions (DHJ) and hence stimulates TOP3A-mediated dissolution. Required for BLM phosphorylation during mitosis. Within the BLM complex, required for BLM and TOP3A stability.

Aliases: BLAP75 antibody, BLM associated polypeptide 75 kDa antibody, BLM associated protein 75 kDa antibody, BLM-associated protein of 75 kDa antibody, C9orf76 antibody, FAAP75 antibody, FLJ12888 antibody, Homolog of yeast RecQ mediated genome instability 1 antibody, RecQ mediated genome instability 1 antibody, RecQ-mediated genome instability protein 1 antibody, Rmi1 antibody, RMI1 homolog antibody, RMI1 RecQ mediated genome instability 1 homolog antibody, RMI1\_HUMAN antibody, RP11-346I8 antibody

UniProt: [Q9H9A7](#)

Pathways: [DNA Damage Repair](#)

## Application Details

Application Notes: Recommended dilution: WB:1:1000-1:5000,

Restrictions: For Research Use only

## Handling

Format: Liquid

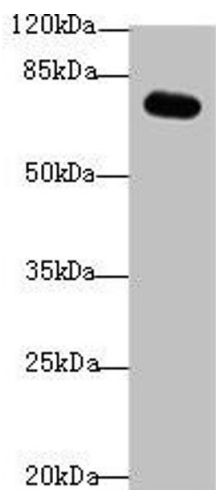
Buffer: Preservative: 0.03 % Proclin 300  
Constituents: 50 % Glycerol, 0.01M PBS, PH 7.4

Preservative: ProClin

Precaution of Use: This product contains ProClin: a POISONOUS AND HAZARDOUS SUBSTANCE which should be handled by trained staff only.

Storage: -20 °C,-80 °C

Storage Comment: Upon receipt, store at -20°C or -80°C. Avoid repeated freeze.



#### Western Blotting

**Image 1.** Western blot All lanes: RMI1 antibody at 4 µg/mL + Mouse kidney tissue Secondary Goat polyclonal to rabbit IgG at 1/10000 dilution Predicted band size: 70 kDa Observed band size: 70 kDa