

Datasheet for ABIN7167550
anti-Reelin antibody (AA 26-254)[Go to Product page](#)

2 Images

Overview

Quantity:	100 µg
Target:	Reelin (RELN)
Binding Specificity:	AA 26-254
Reactivity:	Human
Host:	Rabbit
Clonality:	Polyclonal
Conjugate:	This Reelin antibody is un-conjugated
Application:	Immunohistochemistry (IHC), ELISA

Product Details

Immunogen:	Recombinant Human Reelin protein (26-254AA)
Isotype:	IgG
Cross-Reactivity:	Human
Purification:	>95%, Protein G purified

Target Details

Target:	Reelin (RELN)
Alternative Name:	RELN (RELN Products)
Background:	Background: Extracellular matrix serine protease that plays a role in layering of neurons in the cerebral cortex and cerebellum. Regulates microtubule function in neurons and neuronal

Target Details

migration. Affects migration of sympathetic preganglionic neurons in the spinal cord, where it seems to act as a barrier to neuronal migration. Enzymatic activity is important for the modulation of cell adhesion. Binding to the extracellular domains of lipoprotein receptors VLDLR and LRP8/APOER2 induces tyrosine phosphorylation of DAB1 and modulation of TAU phosphorylation

Aliases: LIS2 antibody, PRO1598 antibody, Reeler antibody, Reelin antibody, RELN antibody, RELN_HUMAN antibody, RL antibody

UniProt: [P78509](#)

Pathways: [Synaptic Membrane](#)

Application Details

Application Notes: Recommended dilution: IHC:1:20-1:500,

Restrictions: For Research Use only

Handling

Format: Liquid

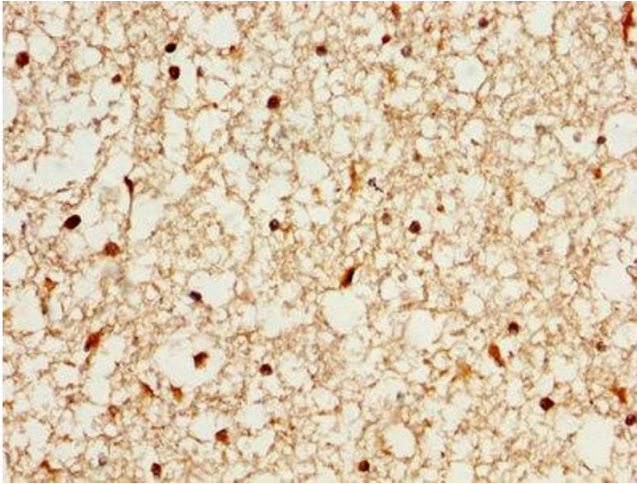
Buffer: Preservative: 0.03 % Proclin 300
Constituents: 50 % Glycerol, 0.01M PBS, PH 7.4

Preservative: ProClin

Precaution of Use: This product contains ProClin: a POISONOUS AND HAZARDOUS SUBSTANCE which should be handled by trained staff only.

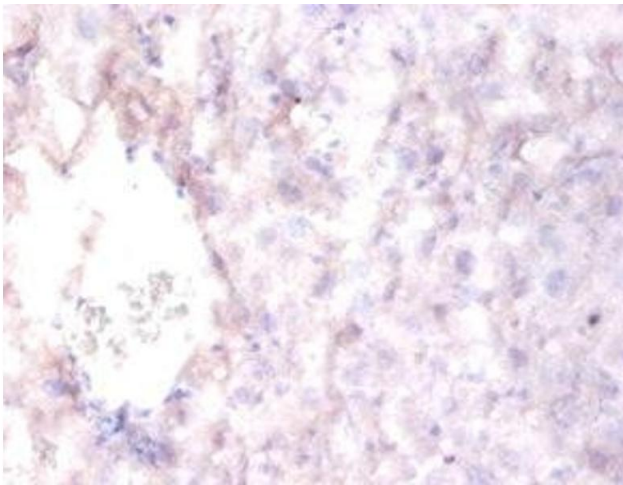
Storage: -20 °C,-80 °C

Storage Comment: Upon receipt, store at -20°C or -80°C. Avoid repeated freeze.



Immunohistochemistry

Image 1. IHC image of ABIN7167550 diluted at 1:200 and staining in paraffin-embedded human brain tissue performed on a Leica Bond™ system. After dewaxing and hydration, antigen retrieval was mediated by high pressure in a citrate buffer (pH 6.0). Section was blocked with 10% normal goat serum 30min at RT. Then primary antibody (1% BSA) was incubated at 4°C overnight. The primary is detected by a biotinylated secondary antibody and visualized using an HRP conjugated SP system.



Immunohistochemistry

Image 2. Immunohistochemistry of paraffin-embedded mouse liver tissue using ABIN7167550 at dilution of 1:100