

Datasheet for ABIN7167554
anti-REG3A antibody (AA 27-175)[Go to Product page](#)

3 Images

Overview

Quantity:	100 µg
Target:	REG3A
Binding Specificity:	AA 27-175
Reactivity:	Human
Host:	Rabbit
Clonality:	Polyclonal
Conjugate:	This REG3A antibody is un-conjugated
Application:	ELISA, Immunohistochemistry (IHC), Immunofluorescence (IF)

Product Details

Immunogen:	Recombinant Human Regenerating islet-derived protein 3-alpha protein (27-175AA)
Isotype:	IgG
Cross-Reactivity:	Human
Purification:	>95%, Protein G purified

Target Details

Target:	REG3A
Alternative Name:	REG3A (REG3A Products)
Background:	FLJ18565 antibody, Hepatocarcinoma intestine pancreas antibody, Hepatointestinal pancreatic protein antibody, HIP antibody, HIP/PAP antibody, Human proislet peptide antibody, INGAP

Target Details

antibody, Pancreatic beta cell growth factor antibody, Pancreatitis associated protein 1 antibody, Pancreatitis associated protein antibody, Pancreatitis-associated protein 1 antibody, PAP antibody, PAP H antibody, PAP homologous protein antibody, PAP1 antibody, PBCGF antibody, Proliferation inducing protein 34 antibody, Proliferation inducing protein 42 antibody, Reg III alpha antibody, REG III antibody, Reg III-alpha antibody, REG-3-alpha antibody, REG3 antibody, Reg3a antibody, REG3A_HUMAN antibody, Regenerating islet derived 3 alpha antibody, Regenerating islet derived protein 3 alpha precursor antibody, Regenerating islet-derived protein 3-alpha 15 kDa form antibody, Regenerating islet-derived protein III-alpha antibody

UniProt: [Q06141](#)

Application Details

Application Notes: Recommended dilution: IHC:1:500-1:1000, IF:1:50-1:200,

Restrictions: For Research Use only

Handling

Format: Liquid

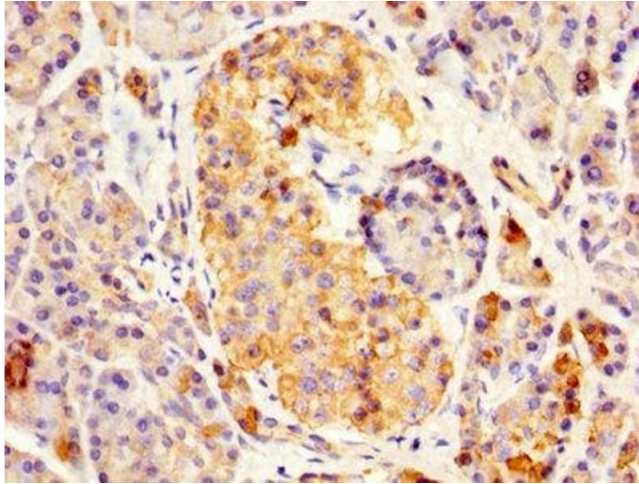
Buffer: Preservative: 0.03 % Proclin 300
Constituents: 50 % Glycerol, 0.01M PBS, PH 7.4

Preservative: ProClin

Precaution of Use: This product contains ProClin: a POISONOUS AND HAZARDOUS SUBSTANCE which should be handled by trained staff only.

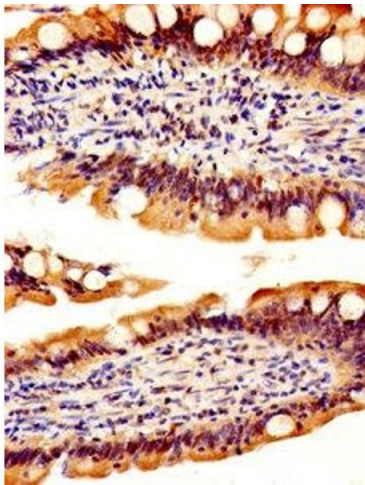
Storage: -20 °C,-80 °C

Storage Comment: Upon receipt, store at -20°C or -80°C. Avoid repeated freeze.



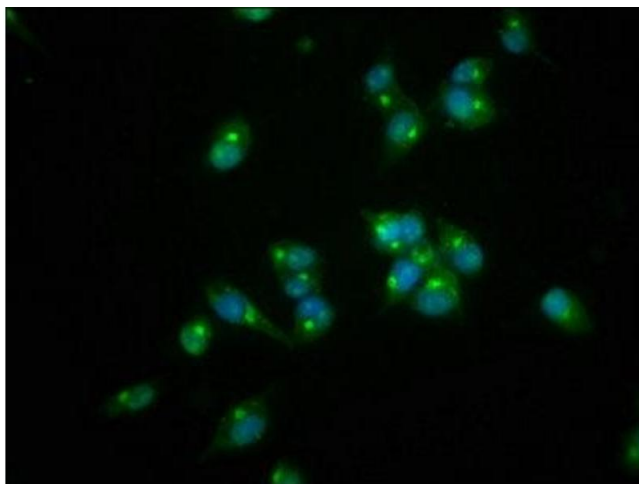
Immunohistochemistry

Image 1. IHC image of ABIN7167554 diluted at 1:500 and staining in paraffin-embedded human pancreatic tissue performed on a Leica Bond™ system. After dewaxing and hydration, antigen retrieval was mediated by high pressure in a citrate buffer (pH 6.0). Section was blocked with 10% normal goat serum 30min at RT. Then primary antibody (1% BSA) was incubated at 4°C overnight. The primary is detected by a biotinylated secondary antibody and visualized using an HRP conjugated SP system.



Immunohistochemistry

Image 2. IHC image of ABIN7167554 diluted at 1:500 and staining in paraffin-embedded human small intestine tissue performed on a Leica Bond™ system. After dewaxing and hydration, antigen retrieval was mediated by high pressure in a citrate buffer (pH 6.0). Section was blocked with 10% normal goat serum 30min at RT. Then primary antibody (1% BSA) was incubated at 4°C overnight. The primary is detected by a biotinylated secondary antibody and visualized using an HRP conjugated SP system.



Immunofluorescence

Image 3. Immunofluorescence staining of SH-SY5Y cells with ABIN7167554 at 1:166, counter-stained with DAPI. The cells were fixed in 4% formaldehyde, permeabilized using 0.2% Triton X-100 and blocked in 10% normal Goat Serum. The cells were then incubated with the antibody overnight at 4°C. The secondary antibody was Alexa Fluor 488-conjugated AffiniPure Goat Anti-Rabbit IgG(H+L).