

Datasheet for ABIN7167562  
**anti-REG4 antibody (AA 27-148)**[Go to Product page](#)

## 2 Images

## Overview

|                      |                                     |
|----------------------|-------------------------------------|
| Quantity:            | 100 µg                              |
| Target:              | REG4                                |
| Binding Specificity: | AA 27-148                           |
| Reactivity:          | Human                               |
| Host:                | Rabbit                              |
| Clonality:           | Polyclonal                          |
| Conjugate:           | This REG4 antibody is un-conjugated |
| Application:         | ELISA, Immunohistochemistry (IHC)   |

## Product Details

|                   |   |
|-------------------|---|
| Immunogen:        | Recombinant Human Regenerating islet-derived protein 4 protein (27-148AA) |
| Isotype:          | IgG   |
| Cross-Reactivity: | Human   |
| Purification:     | >95%, Protein G purified  |

## Target Details

|                   |   |
|-------------------|---|
| Target:           | REG4  |
| Alternative Name: | REG4 ( <a href="#">REG4 Products</a> )  |
| Background:       | Background: Calcium-independent lectin displaying mannose-binding specificity and able to maintain carbohydrate recognition activity in an acidic environment. May be involved in |

## Target Details

inflammatory and metaplastic responses of the gastrointestinal epithelium.

Aliases: Gastrointestinal secretory protein antibody, GISP antibody, Reg IV antibody, REG like protein antibody, REG-4 antibody, REG-like protein antibody, Reg4 antibody, REG4\_HUMAN antibody, Regenerating gene type IV antibody, Regenerating islet derived family member 4 antibody, Regenerating islet derived protein 4 precursor antibody, Regenerating islet-derived protein 4 antibody, Regenerating islet-derived protein IV antibody, REGIV antibody, RELP antibody

UniProt: [Q9BYZ8](#)

## Application Details

Application Notes: Recommended dilution: IHC:1:200-1:500,

Restrictions: For Research Use only

## Handling

Format: Liquid

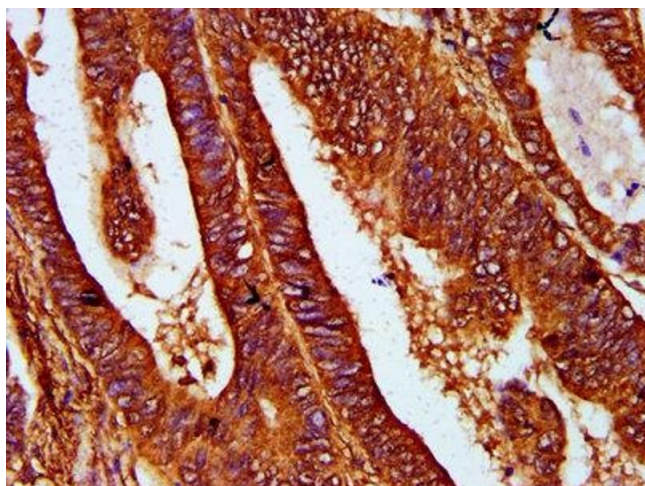
Buffer: Preservative: 0.03 % Proclin 300  
Constituents: 50 % Glycerol, 0.01M PBS, pH 7.4

Preservative: ProClin

Precaution of Use: This product contains ProClin: a POISONOUS AND HAZARDOUS SUBSTANCE which should be handled by trained staff only.

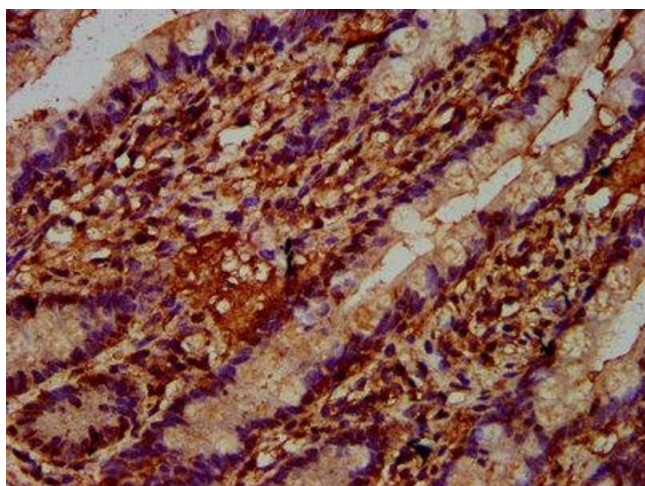
Storage: -20 °C, -80 °C

Storage Comment: Upon receipt, store at -20°C or -80°C. Avoid repeated freeze.



#### Immunohistochemistry

**Image 1.** IHC image of ABIN7167562 diluted at 1:400 and staining in paraffin-embedded human colon cancer performed on a Leica Bond™ system. After dewaxing and hydration, antigen retrieval was mediated by high pressure in a citrate buffer (pH 6.0). Section was blocked with 10% normal goat serum 30min at RT. Then primary antibody (1% BSA) was incubated at 4°C overnight. The primary is detected by a biotinylated secondary antibody and visualized using an HRP conjugated SP system.



#### Immunohistochemistry

**Image 2.** IHC image of ABIN7167562 diluted at 1:400 and staining in paraffin-embedded human small intestine tissue performed on a Leica Bond™ system. After dewaxing and hydration, antigen retrieval was mediated by high pressure in a citrate buffer (pH 6.0). Section was blocked with 10% normal goat serum 30min at RT. Then primary antibody (1% BSA) was incubated at 4°C overnight. The primary is detected by a biotinylated secondary antibody and visualized using an HRP conjugated SP system.