



[Go to Product page](#)

Datasheet for ABIN7167578  
**anti-RPRD1A antibody (AA 2-276)**

1 Image

### Overview

Quantity:	100 µg
Target:	RPRD1A
Binding Specificity:	AA 2-276
Reactivity:	Human
Host:	Rabbit
Clonality:	Polyclonal
Conjugate:	This RPRD1A antibody is un-conjugated
Application:	ELISA, Western Blotting (WB)

### Product Details

Immunogen:	Recombinant Human Regulation of nuclear pre-mRNA domain-containing protein 1A protein (2-276AA)
Isotype:	IgG
Cross-Reactivity:	Human
Purification:	>95%, Protein G purified

### Target Details

Target:	RPRD1A
Alternative Name:	RPRD1A ( <a href="#">RPRD1A Products</a> )
Background:	Background: Interacts with phosphorylated C-terminal heptapeptide repeat domain (CTD) of the

## Target Details

---

largest RNA polymerase II subunit POLR2A, and participates in dephosphorylation of the CTD. May act as a negative regulator of cyclin-D1 (CCND1) and cyclin-E (CCNE1) in the cell cycle. Aliases: C77387 antibody, CDKN2B-related protein antibody, Cyclin dependent kinase 2B inhibitor related protein antibody, Cyclin dependent kinase inhibitor 2B related protein (p15INK4B related protein) antibody, Cyclin dependent kinase inhibitor 2B related protein antibody, Cyclin dependent kinase inhibitor related protein antibody, Cyclin-dependent kinase inhibitor 2B-related protein antibody, FLJ10656 antibody, HsT3101 antibody, Hypothetical protein FLJ10656 antibody, KIAA4077 antibody, MGC19513 antibody, MGC29396 antibody, MGC36325 antibody, mKIAA4077 antibody, p15INK4B related protein antibody, p15INK4B-related protein antibody, Putative uncharacterized protein P15RS antibody, Regulation of nuclear pre mRNA domain containing 1A antibody, Regulation of nuclear pre-mRNA domain-containing protein 1A antibody, RGD1307374 antibody, RPR1A\_HUMAN antibody, RPRD1A antibody

---

UniProt: [Q96P16](#)

## Application Details

---

Application Notes: Recommended dilution: WB:1:1000-1:5000,

Restrictions: For Research Use only

## Handling

---

Format: Liquid

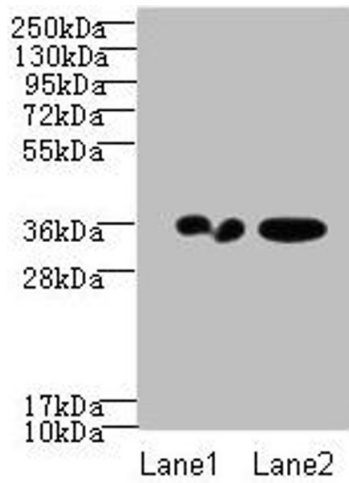
Buffer: Preservative: 0.03 % Proclin 300  
Constituents: 50 % Glycerol, 0.01M PBS, PH 7.4

Preservative: ProClin

Precaution of Use: This product contains ProClin: a POISONOUS AND HAZARDOUS SUBSTANCE which should be handled by trained staff only.

Storage: -20 °C,-80 °C

Storage Comment: Upon receipt, store at -20°C or -80°C. Avoid repeated freeze.



### Western Blotting

**Image 1.** Western blot All lanes: RPRD1A antibody at 2  $\mu$ g/mL Lane 1: A431 whole cell lysate Lane 2: Jurkat whole cell lysate Secondary Goat polyclonal to Rabbit IgG at 1/10000 dilution Predicted band size: 36, 32 kDa Observed band size: 36 kDa