

Datasheet for ABIN7167582
anti-RPRD1B antibody (AA 2-172)[Go to Product page](#)

2 Images

Overview

Quantity:	100 µg
Target:	RPRD1B
Binding Specificity:	AA 2-172
Reactivity:	Human
Host:	Rabbit
Clonality:	Polyclonal
Conjugate:	This RPRD1B antibody is un-conjugated
Application:	Western Blotting (WB), ELISA, Immunohistochemistry (IHC)

Product Details

Immunogen:	Recombinant Human Regulation of nuclear pre-mRNA domain-containing protein 1B protein (2-172AA)
Isotype:	IgG
Cross-Reactivity:	Human
Purification:	>95%, Protein G purified

Target Details

Target:	RPRD1B
Alternative Name:	RPRD1B (RPRD1B Products)
Background:	Background: Interacts with phosphorylated C-terminal heptapeptide repeat domain (CTD) of the

Target Details

largest RNA polymerase II subunit POLR2A, and participates in dephosphorylation of the CTD. Transcriptional regulator which enhances expression of CCND1. Promotes binding of RNA polymerase II to the CCND1 promoter and to the termination region before the poly-A site but decreases its binding after the poly-A site. Prevents RNA polymerase II from reading through the 3' end termination site and may allow it to be recruited back to the promoter through promotion of the formation of a chromatin loop. Also enhances the transcription of a number of other cell cycle-related genes including CDK2, CDK4, CDK6 and cyclin-E but not CDKN1A, CDKN1B or cyclin-A. Promotes cell proliferation.

Aliases: RPRD1B antibody, C20orf77 antibody, CREPT antibody, Regulation of nuclear pre-mRNA domain-containing protein 1B antibody, Cell cycle-related and expression-elevated protein in tumor antibody

UniProt: [Q9NQG5](#)

Application Details

Application Notes: Recommended dilution: WB:1:500-1:2000, IHC:1:20-1:200,

Restrictions: For Research Use only

Handling

Format: Liquid

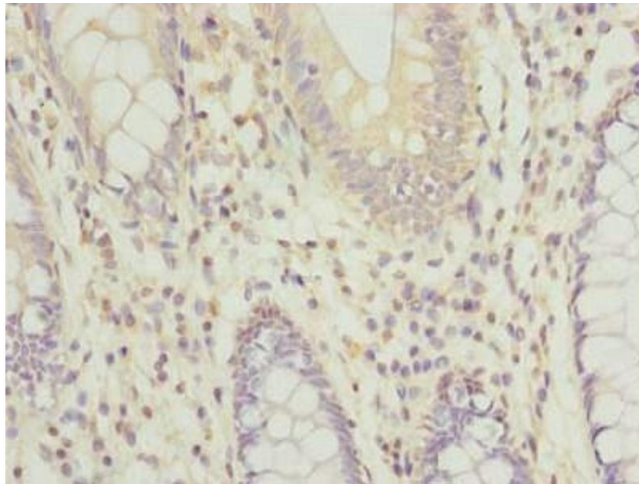
Buffer: Preservative: 0.03 % Proclin 300
Constituents: 50 % Glycerol, 0.01M PBS, PH 7.4

Preservative: ProClin

Precaution of Use: This product contains ProClin: a POISONOUS AND HAZARDOUS SUBSTANCE which should be handled by trained staff only.

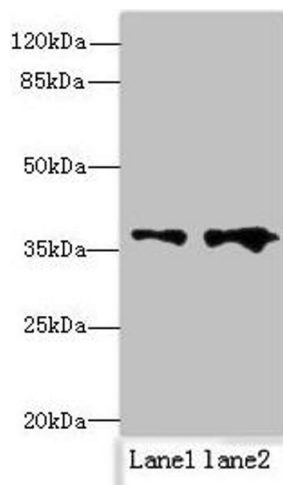
Storage: -20 °C, -80 °C

Storage Comment: Upon receipt, store at -20°C or -80°C. Avoid repeated freeze.



Immunohistochemistry

Image 1. Immunohistochemistry of paraffin-embedded human colon cancer using ABIN7167582 at dilution of 1:100



Western Blotting

Image 2. Western blot All lanes: RPRD1B antibody at 0.2 μ g/mL Lane 1: Jurkat whole cell lysate Lane 2: 293T whole cell lysate Secondary Goat polyclonal to rabbit IgG at 1/10000 dilution Predicted band size: 37 kDa Observed band size: 37 kDa