

Datasheet for ABIN7167586
anti-RGS1 antibody (AA 14-209)

2 Images

[Go to Product page](#)

Overview

| | |
|----------------------|--|
| Quantity: | 100 µg |
| Target: | RGS1 |
| Binding Specificity: | AA 14-209 |
| Reactivity: | Human |
| Host: | Rabbit |
| Clonality: | Polyclonal |
| Conjugate: | This RGS1 antibody is un-conjugated |
| Application: | ELISA, Immunohistochemistry (IHC), Immunofluorescence (IF) |

Product Details

| | |
|-------------------|---|
| Immunogen: | Recombinant Human Regulator of G-protein signaling 1 protein (14-209AA) |
| Isotype: | IgG |
| Cross-Reactivity: | Human |
| Purification: | >95%, Protein G purified |

Target Details

| | |
|-------------------|--|
| Target: | RGS1 |
| Alternative Name: | RGS1 (RGS1 Products) |
| Background: | Background: Regulates G protein-coupled receptor signaling cascades, including signaling downstream of the N-formylpeptide chemoattractant receptors and leukotriene receptors |

Target Details

(PubMed:10480894). Inhibits B cell chemotaxis toward CXCL12 (By similarity). Inhibits signal transduction by increasing the GTPase activity of G protein alpha subunits thereby driving them into their inactive GDP-bound form (PubMed:10480894, PubMed:18434541).

Aliases: 1R20 antibody, B cell activation protein BL34 antibody, B-cell activation protein BL34 antibody, BL34 antibody, Early response protein 1R20 antibody, IER 1 antibody, IER1 antibody, Immediate early response 1 B cell specific antibody, immediate-early response 1, B-cell specific antibody, IR20 antibody, Regulator of G protein signalling 1 antibody, Regulator of G-protein signaling 1 antibody, RGS 1 antibody, RGS1 antibody, RGS1_HUMAN antibody

UniProt: [Q08116](#)

Pathways: [MAPK Signaling](#), [Myometrial Relaxation and Contraction](#), [Regulation of G-Protein Coupled Receptor Protein Signaling](#), [CXCR4-mediated Signaling Events](#)

Application Details

Application Notes: Recommended dilution: IHC:1:20-1:200, IF:1:50-1:200,

Restrictions: For Research Use only

Handling

Format: Liquid

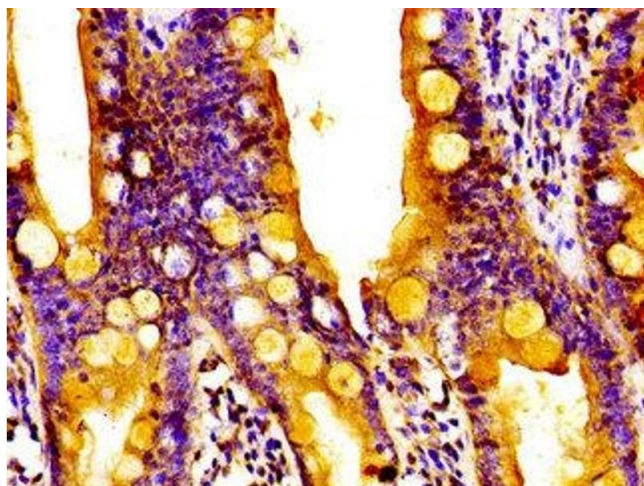
Buffer: Preservative: 0.03 % Proclin 300
Constituents: 50 % Glycerol, 0.01M PBS, pH 7.4

Preservative: ProClin

Precaution of Use: This product contains ProClin: a POISONOUS AND HAZARDOUS SUBSTANCE which should be handled by trained staff only.

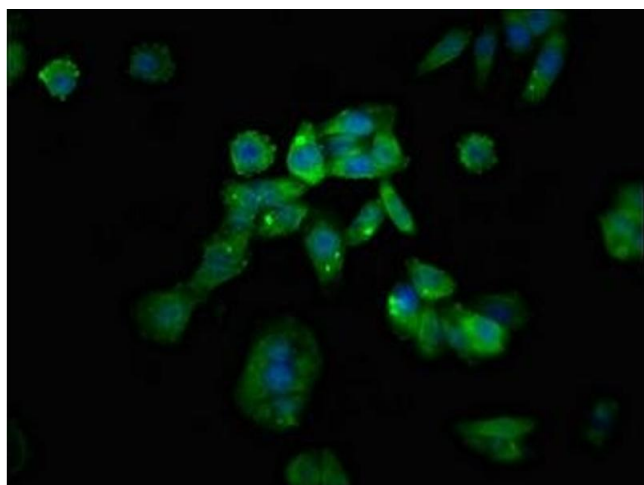
Storage: -20 °C,-80 °C

Storage Comment: Upon receipt, store at -20°C or -80°C. Avoid repeated freeze.



Immunohistochemistry

Image 1. Immunohistochemistry of paraffin-embedded human small intestine tissue using ABIN7167586 at dilution of 1:100



Immunofluorescence

Image 2. Immunofluorescent analysis of HepG2 cells using ABIN7167586 at dilution of 1:100 and Alexa Fluor 488-conjugated AffiniPure Goat Anti-Rabbit IgG(H+L)