

Datasheet for ABIN7167605
anti-RGS2 antibody (AA 1-241)[Go to Product page](#)

3 Images

Overview

Quantity:	100 µL
Target:	RGS2
Binding Specificity:	AA 1-241
Reactivity:	Human
Host:	Rabbit
Clonality:	Polyclonal
Conjugate:	This RGS2 antibody is un-conjugated
Application:	ELISA, Western Blotting (WB), Immunohistochemistry (IHC), Immunofluorescence (IF)

Product Details

Immunogen:	Recombinant Human Regulator of G-protein signaling 20 protein (1-241AA)
Isotype:	IgG
Cross-Reactivity:	Human, Mouse
Purification:	Antigen Affinity Purified

Target Details

Target:	RGS2
Alternative Name:	RGS2 (RGS2 Products)
Background:	Background: Inhibits signal transduction by increasing the GTPase activity of G protein alpha subunits thereby driving them into their inactive GDP-bound form. Binds selectively to G(z)-

Target Details

alpha and G(alpha)-i2 subunits, accelerates their GTPase activity and regulates their signaling activities. The G(z)-alpha activity is inhibited by the phosphorylation and palmitoylation of the G-protein. Negatively regulates mu-opioid receptor-mediated activation of the G-proteins.

Aliases: G(z)GAP antibody, Gz selective GTPase activating protein antibody, Gz-GAP antibody, Gz-selective GTPase-activating protein antibody, HGNC:14600 antibody, Regulator of G protein signaling 20 antibody, Regulator of G-protein signaling 20 antibody, Regulator of G-protein signaling Z1 antibody, Regulator of Gz selective protein signaling 1 antibody, Regulator of Gz-selective protein signaling 1 antibody, RGS20 antibody, RGS20_HUMAN antibody, RGSZ1 antibody, ZGAP1 antibody

UniProt: [O76081](#)

Pathways: [Myometrial Relaxation and Contraction](#), [Regulation of G-Protein Coupled Receptor Protein Signaling](#), [Brown Fat Cell Differentiation](#)

Application Details

Application Notes: Recommended dilution: WB:1:200-1:1000, IHC:1:20-1:200, IF:1:50-1:200,

Restrictions: For Research Use only

Handling

Format: Liquid

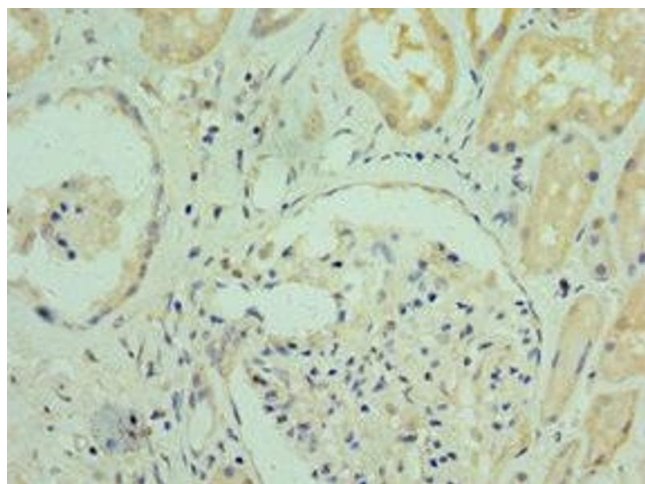
Buffer: PBS with 0.02 % sodium azide, 50 % glycerol, pH 7.3.

Preservative: Sodium azide

Precaution of Use: This product contains Sodium azide: a POISONOUS AND HAZARDOUS SUBSTANCE which should be handled by trained staff only.

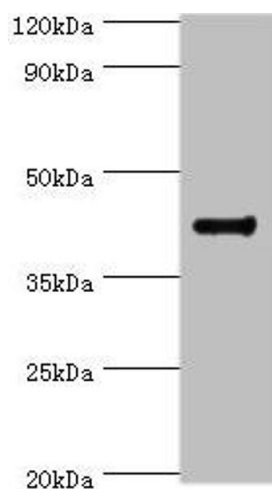
Storage: -20 °C,-80 °C

Storage Comment: Upon receipt, store at -20°C or -80°C. Avoid repeated freeze.



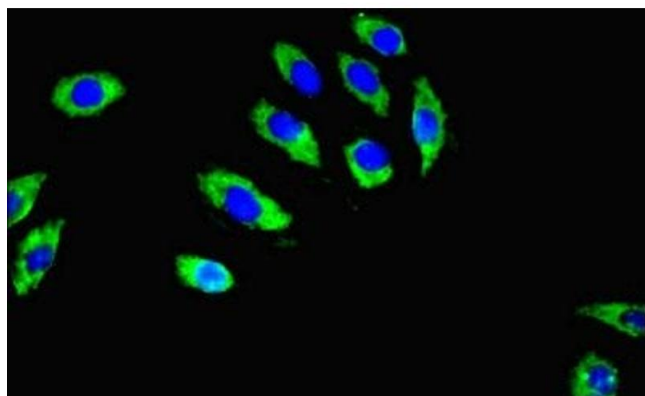
Immunohistochemistry

Image 1. Immunohistochemistry of paraffin-embedded human kidney tissue using ABIN7167605 at dilution of 1:100



Western Blotting

Image 2. Western blot All lanes: RGS20 antibody at 8 µg/mL + Mouse brain tissue Secondary Goat polyclonal to rabbit IgG at 1/10000 dilution Predicted band size: 44, 32, 22, 18, 26, 28 kDa Observed band size: 44 kDa



Immunofluorescence

Image 3. Immunofluorescent analysis of A549 cells using ABIN7167605 at dilution of 1:100 and Alexa Fluor 488-conjugated AffiniPure Goat Anti-Rabbit IgG(H+L)