



[Go to Product page](#)

Datasheet for ABIN7167656  
**anti-RXFP1 antibody (AA 17-151)**

1 Image

### Overview

Quantity:	100 µg
Target:	RXFP1
Binding Specificity:	AA 17-151
Reactivity:	Human
Host:	Rabbit
Clonality:	Polyclonal
Conjugate:	This RXFP1 antibody is un-conjugated
Application:	ELISA, Immunofluorescence (IF)

### Product Details

Immunogen:	Recombinant Human Relaxin receptor 1 protein (17-151AA)
Isotype:	IgG
Cross-Reactivity:	Human
Purification:	>95%, Protein G purified

### Target Details

Target:	RXFP1
Alternative Name:	RXFP1 ( <a href="#">RXFP1 Products</a> )
Background:	Background: Receptor for relaxins. The activity of this receptor is mediated by G proteins leading to stimulation of adenylate cyclase and an increase of cAMP. Binding of the ligand may

## Target Details

---

also activate a tyrosine kinase pathway that inhibits the activity of a phosphodiesterase that degrades cAMP.

Aliases: Gm1018 antibody, Leucine rich repeat containing G protein coupled receptor 7 antibody, Leucine-rich repeat-containing G-protein coupled receptor 7 antibody, LGR 7 antibody, LGR7 antibody, LGR7.1 antibody, LGR7.10 antibody, LGR7.2 antibody, MGC138347 antibody, MGC142177 antibody, Relaxin family peptide receptor 1 antibody, Relaxin receptor 1 antibody, Relaxin/insulin like family peptide receptor 1 antibody, RXFP 1 antibody, RXFP1 antibody, RXFP1\_HUMAN antibody

---

UniProt: [Q9HBX9](#)

---

Pathways: [Myometrial Relaxation and Contraction](#)

## Application Details

---

Application Notes: Recommended dilution: IF:1:50-1:200,

---

Restrictions: For Research Use only

## Handling

---

Format: Liquid

---

Buffer: Preservative: 0.03 % Proclin 300  
Constituents: 50 % Glycerol, 0.01M PBS, pH 7.4

---

Preservative: ProClin

---

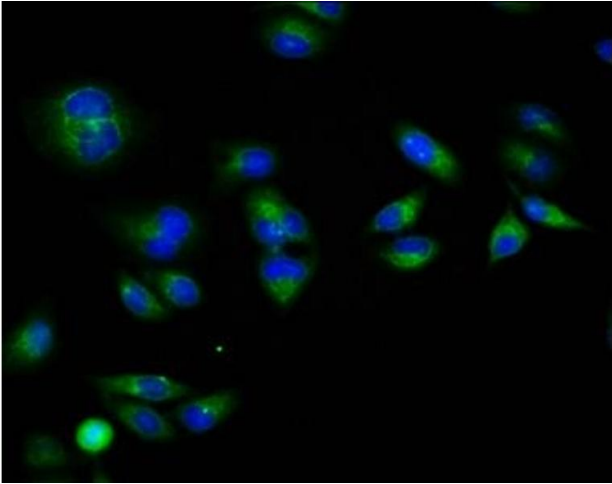
Precaution of Use: This product contains ProClin: a POISONOUS AND HAZARDOUS SUBSTANCE which should be handled by trained staff only.

---

Storage: -20 °C,-80 °C

---

Storage Comment: Upon receipt, store at -20°C or -80°C. Avoid repeated freeze.



### Immunofluorescence

**Image 1.** Immunofluorescence staining of HeLa cells with ABIN7167656 at 1:133, counter-stained with DAPI. The cells were fixed in 4% formaldehyde, permeabilized using 0.2% Triton X-100 and blocked in 10% normal Goat Serum. The cells were then incubated with the antibody overnight at 4°C. The secondary antibody was Alexa Fluor 488-conjugated AffiniPure Goat Anti-Rabbit IgG(H+L).