

Datasheet for ABIN7167660  
**anti-RXFP2 antibody (AA 33-158)**[Go to Product page](#)

## 4 Images

## Overview

Quantity:	100 µg
Target:	RXFP2
Binding Specificity:	AA 33-158
Reactivity:	Human
Host:	Rabbit
Clonality:	Polyclonal
Conjugate:	This RXFP2 antibody is un-conjugated
Application:	Western Blotting (WB), ELISA, Immunohistochemistry (IHC), Immunofluorescence (IF)

## Product Details

Immunogen:	Recombinant Human Relaxin receptor 2 protein (33-158AA)
Isotype:	IgG
Cross-Reactivity:	Human
Purification:	>95%, Protein G purified

## Target Details

Target:	RXFP2
Alternative Name:	RXFP2 ( <a href="#">RXFP2 Products</a> )
Background:	Background: Receptor for relaxin. The activity of this receptor is mediated by G proteins leading to stimulation of adenylate cyclase and an increase of cAMP. May also be a receptor for Leydig

## Target Details

insulin-like peptide (INSL3).

Aliases: RXFP2 antibody, GPR106 antibody, GREAT antibody, LGR8Relaxin receptor 2 antibody, G-protein coupled receptor 106 antibody, G-protein coupled receptor affecting testicular descent antibody, Leucine-rich repeat-containing G-protein coupled receptor 8 antibody, Relaxin family peptide receptor 2 antibody

UniProt: [Q8WXD0](#)

Pathways: [cAMP Metabolic Process](#), [Myometrial Relaxation and Contraction](#)

## Application Details

Application Notes: Recommended dilution: WB:1:500-1:5000, IHC:1:200-1:500, IF:1:50-1:200,

Restrictions: For Research Use only

## Handling

Format: Liquid

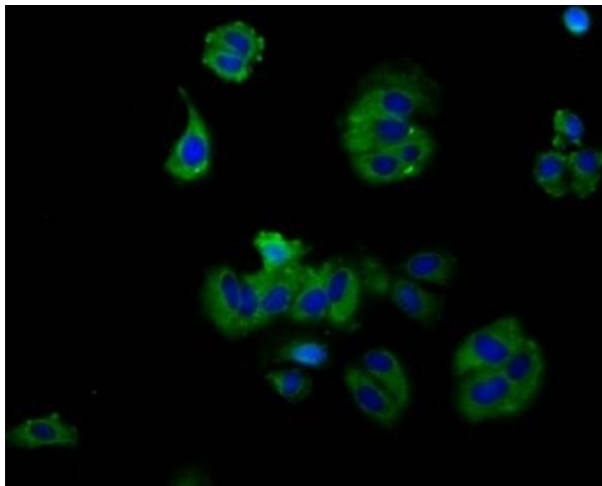
Buffer: Preservative: 0.03 % Proclin 300  
Constituents: 50 % Glycerol, 0.01M PBS, pH 7.4

Preservative: ProClin

Precaution of Use: This product contains ProClin: a POISONOUS AND HAZARDOUS SUBSTANCE which should be handled by trained staff only.

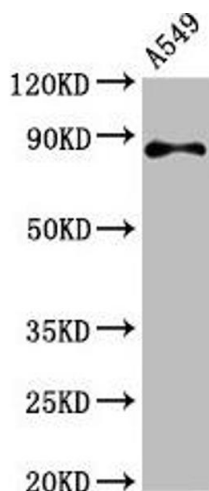
Storage: -20 °C, -80 °C

Storage Comment: Upon receipt, store at -20°C or -80°C. Avoid repeated freeze.



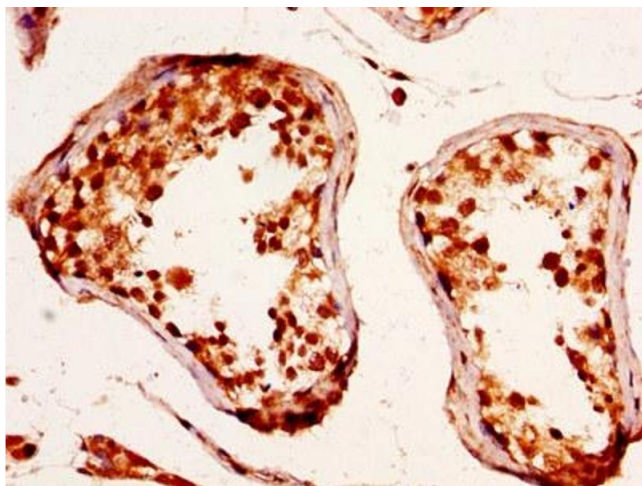
#### Immunofluorescence

**Image 1.** Immunofluorescence staining of HepG2 cells with ABIN7167660 at 1:130, counter-stained with DAPI. The cells were fixed in 4% formaldehyde, permeabilized using 0.2% Triton X-100 and blocked in 10% normal Goat Serum. The cells were then incubated with the antibody overnight at 4°C. The secondary antibody was Alexa Fluor 488-conjugated AffiniPure Goat Anti-Rabbit IgG(H+L).



#### Western Blotting

**Image 2.** Western Blot Positive WB detected in: A549 whole cell lysate All lanes: RXFP2 antibody at 4.6 µg/mL Secondary Goat polyclonal to rabbit IgG at 1/50000 dilution Predicted band size: 87, 84 kDa Observed band size: 87 kDa



#### Immunohistochemistry

**Image 3.** IHC image of ABIN7167660 diluted at 1:290 and staining in paraffin-embedded human testis tissue performed on a Leica Bond™ system. After dewaxing and hydration, antigen retrieval was mediated by high pressure in a citrate buffer (pH 6.0). Section was blocked with 10% normal goat serum 30min at RT. Then primary antibody (1% BSA) was incubated at 4°C overnight. The primary is detected by a biotinylated secondary antibody and visualized using an HRP conjugated SP system.

Please check the [product details page](#) for more images. Overall 4 images are available for ABIN7167660.