

Datasheet for ABIN7167709
anti-RGMA antibody (AA 153-408)[Go to Product page](#)

3 Images

Overview

Quantity:	100 µg
Target:	RGMA
Binding Specificity:	AA 153-408
Reactivity:	Human
Host:	Rabbit
Clonality:	Polyclonal
Conjugate:	This RGMA antibody is un-conjugated
Application:	Western Blotting (WB), ELISA, Immunohistochemistry (IHC)

Product Details

Immunogen:	Recombinant Human Repulsive guidance molecule A protein (153-408AA)
Isotype:	IgG
Cross-Reactivity:	Human, Mouse
Purification:	>95%, Protein G purified

Target Details

Target:	RGMA
Alternative Name:	RGMA (RGMA Products)
Background:	Background: Member of the repulsive guidance molecule (RGM) family that performs several functions in the developing and adult nervous system. Regulates cephalic neural tube closure,

Target Details

inhibits neurite outgrowth and cortical neuron branching, and the formation of mature synapses. Binding to its receptor NEO1/neogenin induces activation of RHOA-ROCK1/Rho-kinase signaling pathway through UNC5B-ARHGEF12/LARG-PTK2/FAK1 cascade, leading to collapse of the neuronal growth cone and neurite outgrowth inhibition. Furthermore, RGMA binding to NEO1/neogenin leads to HRAS inactivation by influencing HRAS-PTK2/FAK1-AKT1 pathway. It also functions as a bone morphogenetic protein (BMP) coreceptor that may signal through SMAD1, SMAD5, and SMAD8.

Aliases: Repulsive guidance molecule A antibody, RGM antibody, RGM domain family member A antibody, RGMA antibody, RGMA_HUMAN antibody

UniProt: [Q96B86](#)

Pathways: [Tube Formation](#)

Application Details

Application Notes: Recommended dilution: WB:1:1000-1:5000, IHC:1:20-1:200,

Restrictions: For Research Use only

Handling

Format: Liquid

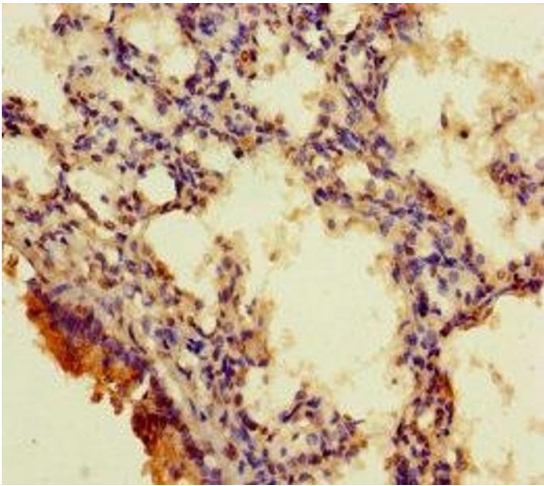
Buffer: Preservative: 0.03 % Proclin 300
Constituents: 50 % Glycerol, 0.01M PBS, PH 7.4

Preservative: ProClin

Precaution of Use: This product contains ProClin: a POISONOUS AND HAZARDOUS SUBSTANCE which should be handled by trained staff only.

Storage: -20 °C,-80 °C

Storage Comment: Upon receipt, store at -20°C or -80°C. Avoid repeated freeze.



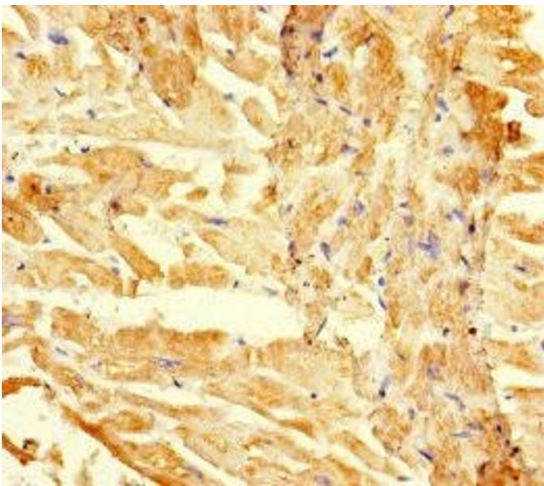
Immunohistochemistry

Image 1. Immunohistochemistry of paraffin-embedded human lung tissue using ABIN7167709 at dilution of 1:100



Western Blotting

Image 2. Western Blot All lanes: RGMA antibody at 12 μ g/mL Lane 1: Mouse brain tissue Lane 2: Hela whole cell lysate Secondary Goat polyclonal to rabbit IgG at 1/10000 dilution Predicted band size: 50, 48, 51 kDa Observed band size: 50 kDa



Immunohistochemistry

Image 3. Immunohistochemistry of paraffin-embedded human heart tissue using ABIN7167709 at dilution of 1:100