



[Go to Product page](#)

Datasheet for ABIN7167729
anti-RFPL2 antibody (AA 99-378)

3 Images

Overview

Quantity:	100 µL
Target:	RFPL2
Binding Specificity:	AA 99-378
Reactivity:	Human
Host:	Rabbit
Clonality:	Polyclonal
Conjugate:	This RFPL2 antibody is un-conjugated
Application:	Western Blotting (WB), ELISA, Immunohistochemistry (IHC)

Product Details

Immunogen:	Recombinant Human Ret finger protein-like 2 protein (99-378AA)
Isotype:	IgG
Cross-Reactivity:	Human
Purification:	Antigen Affinity Purified

Target Details

Target:	RFPL2
Alternative Name:	RFPL2 (RFPL2 Products)
Background:	Ret finger protein like 2 antibody, Ret finger protein-like 2 antibody, RFPL 2 antibody, RFPL2 antibody, RFPL2_HUMAN antibody, RING finger protein 79 antibody, RNF79 antibody

Target Details

UniProt: [O75678](#)

Application Details

Application Notes: Recommended dilution: WB:1:1000-1:5000, IHC:1:20-1:200,

Restrictions: For Research Use only

Handling

Format: Liquid

Buffer: PBS with 0.02 % sodium azide, 50 % glycerol, pH 7.3.

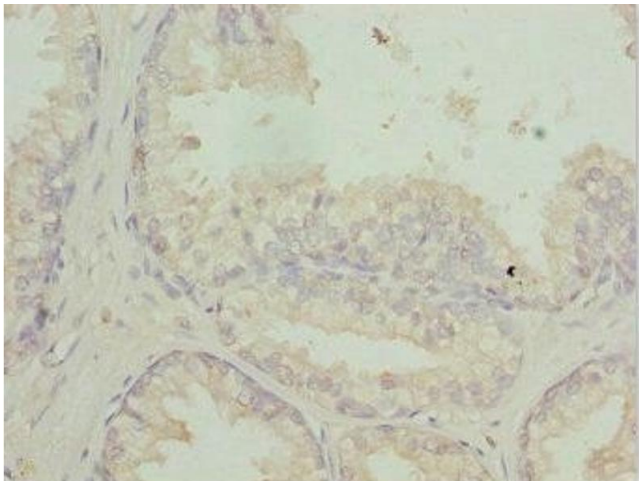
Preservative: Sodium azide

Precaution of Use: This product contains Sodium azide: a POISONOUS AND HAZARDOUS SUBSTANCE which should be handled by trained staff only.

Storage: -20 °C,-80 °C

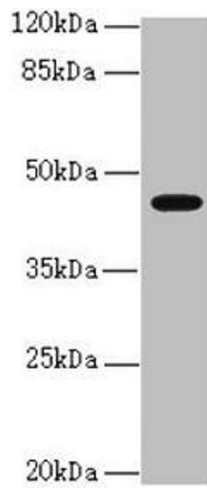
Storage Comment: Upon receipt, store at -20°C or -80°C. Avoid repeated freeze.

Images



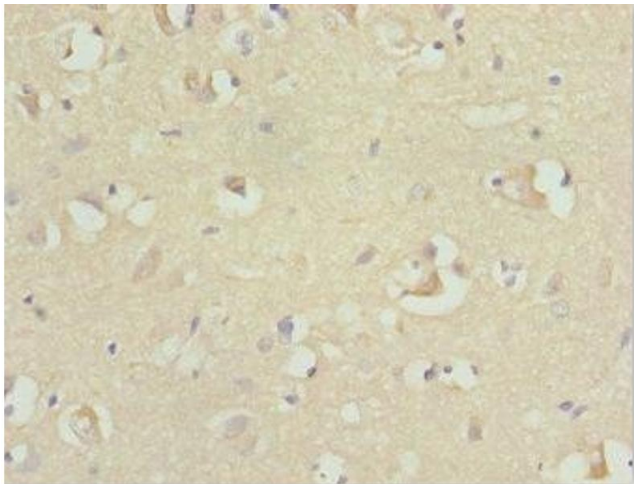
Immunohistochemistry

Image 1. Immunohistochemistry of paraffin-embedded human prostate cancer using ABIN7167729 at dilution of 1:100



Western Blotting

Image 2. Western blot All lanes: RFPL2 antibody at 3.36 μ g/mL + MCF-7 whole cell lysate Secondary Goat polyclonal to rabbit IgG at 1/10000 dilution Predicted band size: 43, 33, 36 kDa Observed band size: 43 kDa



Immunohistochemistry

Image 3. Immunohistochemistry of paraffin-embedded human brain tissue using ABIN7167729 at dilution of 1:100