



[Go to Product page](#)

Datasheet for ABIN7167731
anti-RFPL3 antibody (AA 8-288)

1 Image

Overview

Quantity:	100 µg
Target:	RFPL3
Binding Specificity:	AA 8-288
Reactivity:	Human
Host:	Rabbit
Clonality:	Polyclonal
Conjugate:	This RFPL3 antibody is un-conjugated
Application:	Western Blotting (WB), ELISA

Product Details

Immunogen:	Recombinant Human Ret finger protein-like 3 protein (8-288AA)
Isotype:	IgG
Cross-Reactivity:	Human
Purification:	>95%, Protein G purified

Target Details

Target:	RFPL3
Alternative Name:	RFPL3 (RFPL3 Products)
Background:	RFPL3 antibody, Ret finger protein-like 3 antibody
UniProt:	O75679

Application Details

Application Notes: Recommended dilution: WB:1:500-1:2000,

Restrictions: For Research Use only

Handling

Format: Liquid

Buffer: Preservative: 0.03 % Proclin 300
Constituents: 50 % Glycerol, 0.01M PBS, PH 7.4

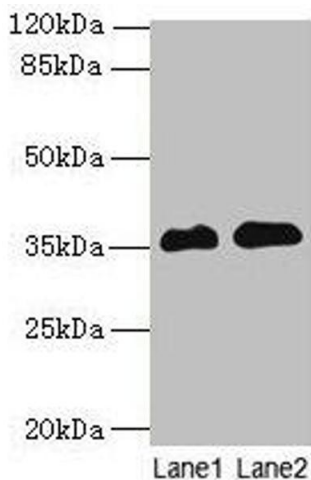
Preservative: ProClin

Precaution of Use: This product contains ProClin: a POISONOUS AND HAZARDOUS SUBSTANCE which should be handled by trained staff only.

Storage: -20 °C,-80 °C

Storage Comment: Upon receipt, store at -20°C or -80°C. Avoid repeated freeze.

Images



Western Blotting

Image 1. Western blot All lanes: RFPL3 antibody at 8 µg/mL
Lane 1: Human placenta tissue Lane 2: HL60 whole cell lysate
Secondary Goat polyclonal to rabbit IgG at 1/10000 dilution
Predicted band size: 36, 33 kDa Observed band size: 36 kDa