

Datasheet for ABIN7167744  
**anti-RCN3 antibody (AA 71-161)**

## 3 Images

[Go to Product page](#)

## Overview

Quantity:	100 µg
Target:	RCN3
Binding Specificity:	AA 71-161
Reactivity:	Human
Host:	Rabbit
Clonality:	Polyclonal
Conjugate:	This RCN3 antibody is un-conjugated
Application:	Western Blotting (WB), ELISA, Immunohistochemistry (IHC)

## Product Details

Immunogen:	Recombinant Human Reticulocalbin-3 protein (71-161AA)
Isotype:	IgG
Cross-Reactivity:	Human, Mouse
Purification:	>95%, Protein G purified

## Target Details

Target:	RCN3
Alternative Name:	RCN3 ( <a href="#">RCN3 Products</a> )
Background:	EF-hand calcium-binding protein RLP49 antibody, RCN3 antibody, RCN3_HUMAN antibody, reticulocalbin 3, EF-hand calcium binding domain antibody, Reticulocalbin-3 antibody, RLP49

## Target Details

antibody, UNQ239/PRO272 antibody

UniProt: [Q96D15](#)

## Application Details

Application Notes: Recommended dilution: WB:1:500-1:5000, IHC:1:200-1:500,

Restrictions: For Research Use only

## Handling

Format: Liquid

Buffer: Preservative: 0.03 % Proclin 300  
Constituents: 50 % Glycerol, 0.01M PBS, pH 7.4

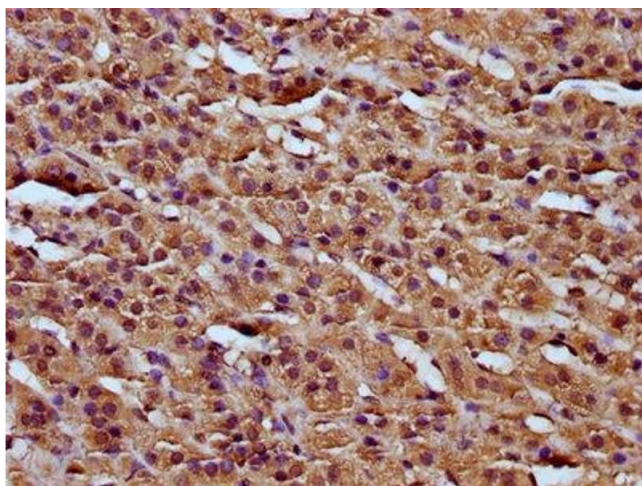
Preservative: ProClin

Precaution of Use: This product contains ProClin: a POISONOUS AND HAZARDOUS SUBSTANCE which should be handled by trained staff only.

Storage: -20 °C,-80 °C

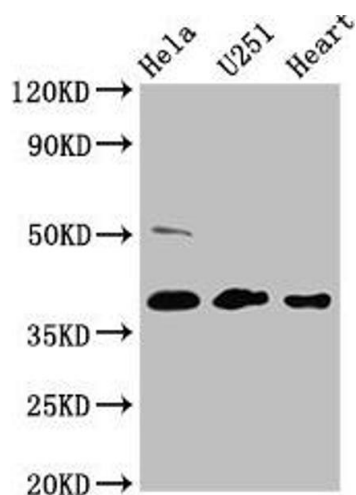
Storage Comment: Upon receipt, store at -20°C or -80°C. Avoid repeated freeze.

## Images



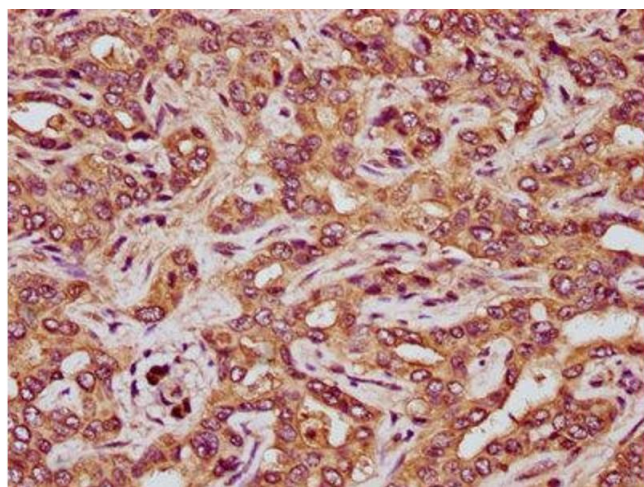
### Immunohistochemistry

**Image 1.** IHC image of ABIN7167744 diluted at 1:200 and staining in paraffin-embedded human adrenal gland tissue performed on a Leica Bond™ system. After dewaxing and hydration, antigen retrieval was mediated by high pressure in a citrate buffer (pH 6.0). Section was blocked with 10% normal goat serum 30min at RT. Then primary antibody (1% BSA) was incubated at 4°C overnight. The primary is detected by a biotinylated secondary antibody and visualized using an HRP conjugated SP system.



### Western Blotting

**Image 2.** Western Blot Positive WB detected in: HeLa whole cell lysate, U251 whole cell lysate, Mouse heart tissue All lanes: RCN3 antibody at 4.6 µg/mL Secondary Goat polyclonal to rabbit IgG at 1/50000 dilution Predicted band size: 38 kDa Observed band size: 38 kDa



### Immunohistochemistry

**Image 3.** IHC image of ABIN7167744 diluted at 1:200 and staining in paraffin-embedded human liver tissue performed on a Leica Bond™ system. After dewaxing and hydration, antigen retrieval was mediated by high pressure in a citrate buffer (pH 6.0). Section was blocked with 10% normal goat serum 30min at RT. Then primary antibody (1% BSA) was incubated at 4°C overnight. The primary is detected by a biotinylated secondary antibody and visualized using an HRP conjugated SP system.