

Datasheet for ABIN7167761
anti-PDE6H antibody (AA 1-83)[Go to Product page](#)

1 Image

Overview

Quantity:	100 µg
Target:	PDE6H
Binding Specificity:	AA 1-83
Reactivity:	Human
Host:	Rabbit
Clonality:	Polyclonal
Conjugate:	This PDE6H antibody is un-conjugated
Application:	ELISA, Immunohistochemistry (IHC)

Product Details

Immunogen:	Recombinant Human Retinal cone rhodopsin-sensitive cGMP 3',5'-cyclic phosphodiesterase subunit gamma protein (1-83AA)
Isotype:	IgG
Cross-Reactivity:	Human
Purification:	>95%, Protein G purified

Target Details

Target:	PDE6H
Alternative Name:	PDE6H (PDE6H Products)
Background:	Background: Participates in processes of transmission and amplification of the visual signal.

Target Details

cGMP-PDEs are the effector molecules in G-protein-mediated phototransduction in vertebrate rods and cones.

Aliases: 5"-cyclic phosphodiesterase subunit gamma antibody, CNCG_HUMAN antibody, GMP-PDE gamma antibody, Pde6h antibody, Retinal cone rhodopsin-sensitive cGMP 3" antibody

UniProt: [Q13956](#)

Pathways: [EGFR Signaling Pathway](#), [Regulation of G-Protein Coupled Receptor Protein Signaling](#)

Application Details

Application Notes: Recommended dilution: IHC:1:20-1:200,

Restrictions: For Research Use only

Handling

Format: Liquid

Buffer: Preservative: 0.03 % Proclin 300
Constituents: 50 % Glycerol, 0.01M PBS, PH 7.4

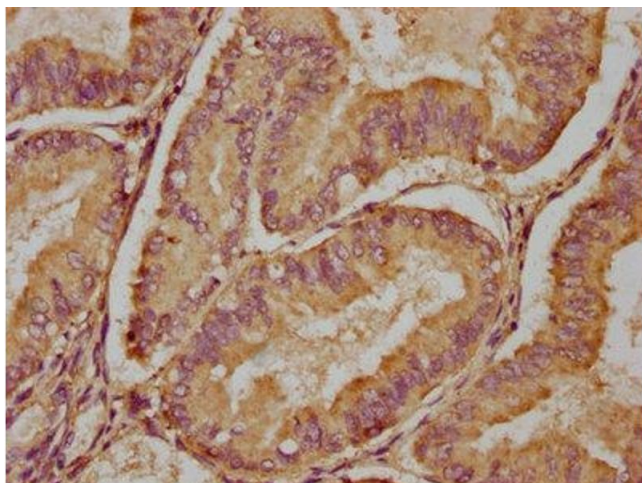
Preservative: ProClin

Precaution of Use: This product contains ProClin: a POISONOUS AND HAZARDOUS SUBSTANCE which should be handled by trained staff only.

Storage: -20 °C,-80 °C

Storage Comment: Upon receipt, store at -20°C or -80°C. Avoid repeated freeze.

Images



Immunohistochemistry

Image 1. IHC image of ABIN7167761 diluted at 1:100 and staining in paraffin-embedded human endometrial cancer performed on a Leica Bond™ system. After dewaxing and hydration, antigen retrieval was mediated by high pressure in a citrate buffer (pH 6.0). Section was blocked with 10 % normal goat serum 30 min at RT. Then primary antibody (1 % BSA) was incubated at 4 °C overnight. The primary is detected by a biotinylated secondary antibody and

visualized using an HRP conjugated SP system.