



[Go to Product page](#)

Datasheet for ABIN7167766
anti-ALDH1A2 antibody (AA 1-180)

2 Images

Overview

Quantity:	100 µL
Target:	ALDH1A2
Binding Specificity:	AA 1-180
Reactivity:	Human
Host:	Rabbit
Clonality:	Polyclonal
Conjugate:	This ALDH1A2 antibody is un-conjugated
Application:	Western Blotting (WB), ELISA, Immunohistochemistry (IHC)

Product Details

Immunogen:	Recombinant Human Retinal dehydrogenase 2 protein (1-180AA)
Isotype:	IgG
Cross-Reactivity:	Human, Mouse
Purification:	Antigen Affinity Purified

Target Details

Target:	ALDH1A2
Alternative Name:	ALDH1A2 (ALDH1A2 Products)
Background:	Background: Recognizes as substrates free retinal and cellular retinol-binding protein-bound retinal. Does metabolize octanal and decanal but does not metabolize citral, benzaldehyde,

Target Details

acetaldehyde and propanal efficiently .

Aliases: AL1A2_HUMAN antibody, Aldehyde dehydrogenase family 1 member A2 antibody, ALDH1A2 aldehyde dehydrogenase 1 family, member A2 antibody, ALDH1A2 antibody, Aldh1a7 antibody, AV116159 antibody, MGC26444 antibody, RALDH 2 antibody, RALDH(II) antibody, Raldh1 antibody, RalDH2 antibody, RALDH2 T antibody, Retinal dehydrogenase 2 antibody, Retinaldehyde dehydrogenase 2 antibody, Retinaldehyde specific dehydrogenase type 2 antibody, Retinaldehyde-specific dehydrogenase type 2 antibody

UniProt: [094788](#)

Pathways: [Retinoic Acid Receptor Signaling Pathway](#)

Application Details

Application Notes: Recommended dilution: WB:1:500-1:5000, IHC:1:20-1:200,

Restrictions: For Research Use only

Handling

Format: Liquid

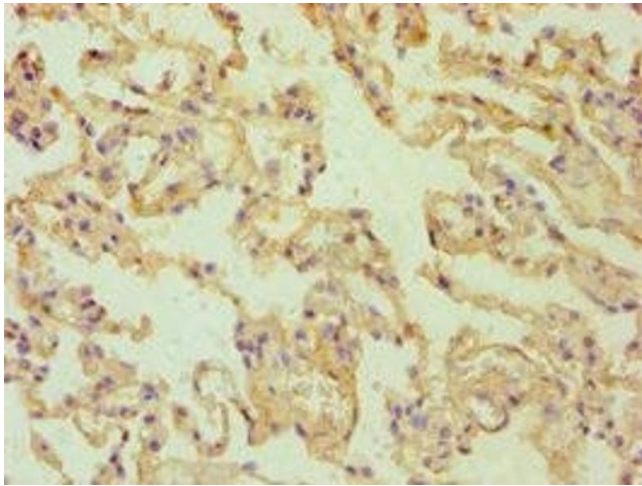
Buffer: PBS with 0.02 % sodium azide, 50 % glycerol, pH 7.3.

Preservative: Sodium azide

Precaution of Use: This product contains Sodium azide: a POISONOUS AND HAZARDOUS SUBSTANCE which should be handled by trained staff only.

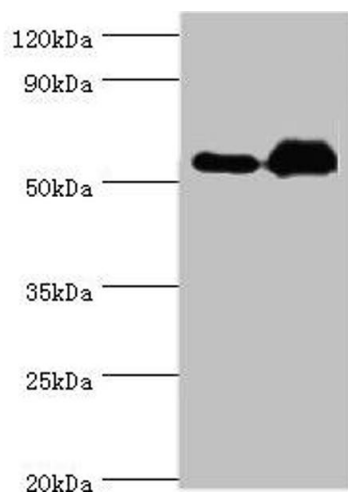
Storage: -20 °C,-80 °C

Storage Comment: Upon receipt, store at -20°C or -80°C. Avoid repeated freeze.



Immunohistochemistry

Image 1. Immunohistochemistry of paraffin-embedded human lung tissue using ABIN7167766 at dilution of 1:100



Western Blotting

Image 2. Western blot All lanes: Retinal dehydrogenase 2 antibody at 9 µg/mL Lane 1: K562 whole cell lysate Lane 2: Mouse liver tissue Secondary Goat polyclonal to rabbit IgG at 1/10000 dilution Predicted band size: 57, 54, 55, 47 kDa Observed band size: 57 kDa