

Datasheet for ABIN7167772
anti-GUCY2D antibody (AA 362-462)[Go to Product page](#)

2 Images

Overview

Quantity:	100 µg
Target:	GUCY2D
Binding Specificity:	AA 362-462
Reactivity:	Human
Host:	Rabbit
Clonality:	Polyclonal
Conjugate:	This GUCY2D antibody is un-conjugated
Application:	Western Blotting (WB), ELISA, Immunofluorescence (IF)

Product Details

Immunogen:	Recombinant Human Retinal guanylyl cyclase 1 protein (362-462AA)
Isotype:	IgG
Cross-Reactivity:	Human
Purification:	>95%, Protein G purified

Target Details

Target:	GUCY2D
Alternative Name:	GUCY2D (GUCY2D Products)
Background:	Background: Probably plays a specific functional role in the rods and/or cones of photoreceptors. It may be the enzyme involved in the resynthesis of cGMP required for recovery

Target Details

of the dark state after phototransduction.

Aliases: GUCY2D antibody, CORD6 antibody, GUC1A4 antibody, GUC2D antibody, RETGC antibody, RETGC1 antibody, Retinal guanylyl cyclase 1 antibody, RETGC-1 antibody, EC 4.6.1.2 antibody, CG-E antibody, Guanylate cyclase 2D antibody, retinal antibody, Rod outer segment membrane guanylate cyclase antibody, ROS-GC antibody

UniProt: [Q02846](#)

Pathways: [Regulation of G-Protein Coupled Receptor Protein Signaling](#), [Phototransduction](#)

Application Details

Application Notes: Recommended dilution: WB:1:500-1:5000, IF:1:200-1:500,

Restrictions: For Research Use only

Handling

Format: Liquid

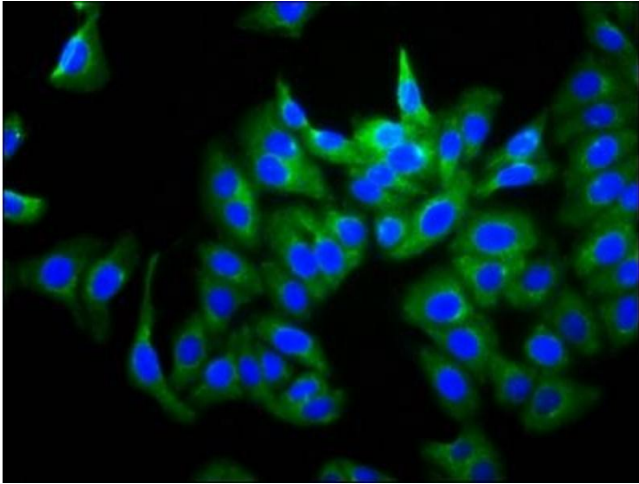
Buffer: Preservative: 0.03 % Proclin 300
Constituents: 50 % Glycerol, 0.01M PBS, pH 7.4

Preservative: ProClin

Precaution of Use: This product contains ProClin: a POISONOUS AND HAZARDOUS SUBSTANCE which should be handled by trained staff only.

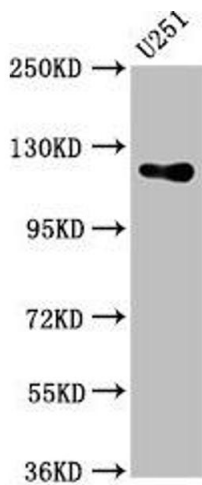
Storage: -20 °C, -80 °C

Storage Comment: Upon receipt, store at -20°C or -80°C. Avoid repeated freeze.



Immunofluorescence

Image 1. Immunofluorescence staining of HepG2 cells with ABIN7167772 at 1:266, counter-stained with DAPI. The cells were fixed in 4% formaldehyde, permeabilized using 0.2% Triton X-100 and blocked in 10% normal Goat Serum. The cells were then incubated with the antibody overnight at 4°C. The secondary antibody was Alexa Fluor 488-conjugated AffiniPure Goat Anti-Rabbit IgG(H+L).



Western Blotting

Image 2. Western Blot Positive WB detected in: U251 whole cell lysate All lanes: GUCY2D antibody at 5.4 µg/mL Secondary Goat polyclonal to rabbit IgG at 1/50000 dilution Predicted band size: 121 kDa Observed band size: 121 kDa