



[Go to Product page](#)

Datasheet for ABIN7167776
anti-PDE6D antibody (AA 1-150)

2 Images

Overview

Quantity:	100 µg
Target:	PDE6D
Binding Specificity:	AA 1-150
Reactivity:	Human
Host:	Rabbit
Clonality:	Polyclonal
Conjugate:	This PDE6D antibody is un-conjugated
Application:	ELISA, Western Blotting (WB), Immunohistochemistry (IHC)

Product Details

Immunogen:	Recombinant Human Retinal rod rhodopsin-sensitive cGMP 3'5'-cyclic phosphodiesterase subunit delta protein (1-150AA)
Isotype:	IgG
Cross-Reactivity:	Human
Purification:	Antigen Affinity Purified

Target Details

Target:	PDE6D
Alternative Name:	PDE6D (PDE6D Products)
Background:	Background: Promotes the release of prenylated target proteins from cellular membranes

Target Details

(PubMed:9712853). Modulates the activity of prenylated or palmitoylated Ras family members by regulating their subcellular location (PubMed:22002721, PubMed:23698361). Required for normal ciliary targeting of farnesylated target proteins, such as INPP5E (PubMed:24166846). Modulates the subcellular location of target proteins by acting as a GTP specific dissociation inhibitor (GDI) (By similarity). Increases the affinity of ARL3 for GTP by several orders of magnitude. Stabilizes ARL3-GTP by decreasing the nucleotide dissociation rate (By similarity). Aliases: 5"-cyclic phosphodiesterase subunit delta antibody, GMP PDE delta antibody, GMP-PDE delta antibody, p17 protein antibody, PDE 6 antibody, PDE 6D antibody, PDE D antibody, PDE6 antibody, PDE6D antibody, PDE6D_HUMAN antibody, PDED antibody, Phosphodiesterase 6D cGMP specific antibody, Phosphodiesterase 6D cGMP specific rod delta antibody, Protein p17 antibody, Retinal rod photoreceptor cGMP phosphodiesterase delta antibody, Retinal rod rhodopsin sensitive cGMP 3' 5' cyclic phosphodiesterase subunit delta antibody, Retinal rod rhodopsin-sensitive cGMP 3" antibody

UniProt: [O43924](#)

Application Details

Application Notes: Recommended dilution: WB:1:500-1:2000, IHC:1:20-1:200,

Restrictions: For Research Use only

Handling

Format: Liquid

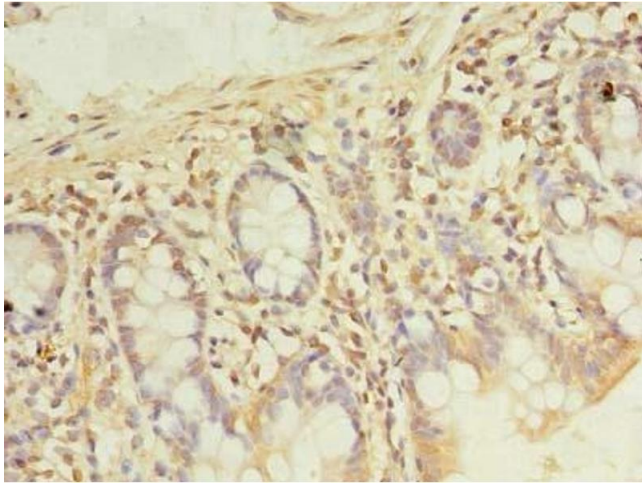
Buffer: Preservative: 0.03 % Proclin 300
Constituents: 50 % Glycerol, 0.01M PBS, PH 7.4

Preservative: ProClin

Precaution of Use: This product contains ProClin: a POISONOUS AND HAZARDOUS SUBSTANCE which should be handled by trained staff only.

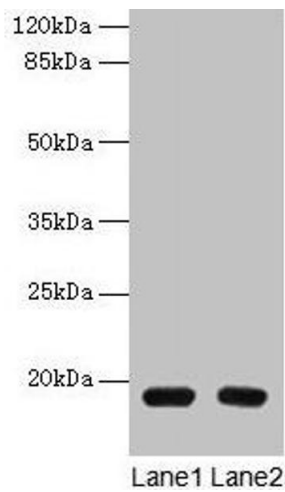
Storage: -20 °C,-80 °C

Storage Comment: Upon receipt, store at -20°C or -80°C. Avoid repeated freeze.



Immunohistochemistry

Image 1. Immunohistochemistry of paraffin-embedded human small intestine tissue using ABIN7167776 at dilution of 1:100



Western Blotting

Image 2. Western blot All lanes: PDE6D antibody at 1.5 μ g/mL Lane 1: A549 whole cell lysate Lane 2: MCF-7 whole cell lysate Secondary Goat polyclonal to rabbit IgG at 1/10000 dilution Predicted band size: 18 kDa Observed band size: 18 kDa