

Datasheet for ABIN7167780
anti-RLBP1 antibody (AA 10-91)

2 Images

[Go to Product page](#)

Overview

Quantity:	100 µg
Target:	RLBP1
Binding Specificity:	AA 10-91
Reactivity:	Human
Host:	Rabbit
Clonality:	Polyclonal
Conjugate:	This RLBP1 antibody is un-conjugated
Application:	Immunohistochemistry (IHC), ELISA, Immunofluorescence (IF)

Product Details

Immunogen:	Recombinant Human Retinaldehyde-binding protein 1 protein (10-91AA)
Isotype:	IgG
Cross-Reactivity:	Human
Purification:	>95%, Protein G purified

Target Details

Target:	RLBP1
Alternative Name:	RLBP1 (RLBP1 Products)
Background:	Background: Soluble retinoid carrier essential the proper function of both rod and cone photoreceptors. Participates in the regeneration of active 11-cis-retinol and 11-cis-

Target Details

retinaldehyde, from the inactive 11-trans products of the rhodopsin photocycle and in the de novo synthesis of these retinoids from 11-trans metabolic precursors. The cycling of retinoids between photoreceptor and adjacent pigment epithelium cells is known as the 'visual cycle'.

Aliases: Cellular retinaldehyde binding protein 1 antibody, Cellular retinaldehyde binding protein antibody, Cellular retinaldehyde-binding protein antibody, MGC3663 antibody, Retinaldehyde binding protein 1 antibody, Retinaldehyde-binding protein 1 antibody, RLBP 1 antibody, RLBP1 antibody, RLBP1_HUMAN antibody

UniProt: [P12271](#)

Application Details

Application Notes: Recommended dilution: IHC:1:20-1:200, IF:1:50-1:200,

Restrictions: For Research Use only

Handling

Format: Liquid

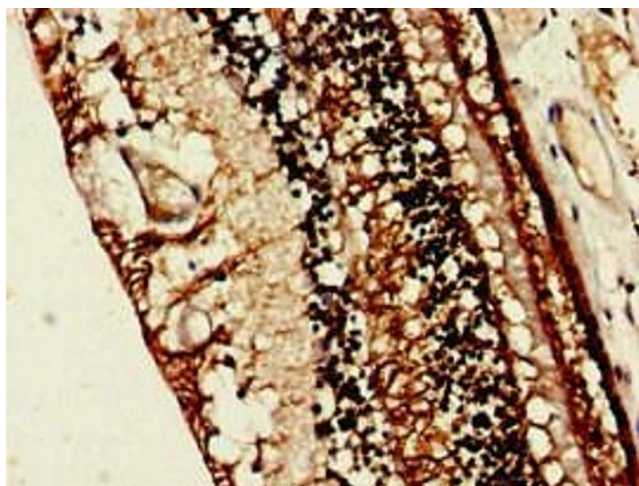
Buffer: Preservative: 0.03 % Proclin 300
Constituents: 50 % Glycerol, 0.01M PBS, pH 7.4

Preservative: ProClin

Precaution of Use: This product contains ProClin: a POISONOUS AND HAZARDOUS SUBSTANCE which should be handled by trained staff only.

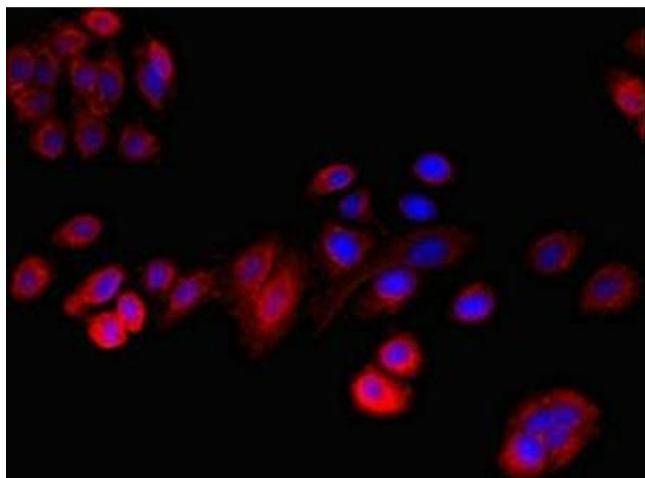
Storage: -20 °C,-80 °C

Storage Comment: Upon receipt, store at -20°C or -80°C. Avoid repeated freeze.



Immunohistochemistry

Image 1. Immunohistochemistry of paraffin-embedded human eye tissue using ABIN7167780 at dilution of 1:100



Immunofluorescence

Image 2. Immunofluorescent analysis of HepG2 cells using ABIN7167780 at dilution of 1:100 and Cy3-conjugated Goat Anti-Rabbit IgG