



Datasheet for ABIN7167824
anti-RPE65 antibody (AA 348-484)



[Go to Product page](#)

3 Images

Overview

Quantity:	100 µg
Target:	RPE65
Binding Specificity:	AA 348-484
Reactivity:	Human
Host:	Rabbit
Clonality:	Polyclonal
Conjugate:	This RPE65 antibody is un-conjugated
Application:	Western Blotting (WB), ELISA, Immunofluorescence (IF)

Product Details

Immunogen:	Recombinant Human Retinoid isomerohydrolase protein (348-484AA)
Isotype:	IgG
Cross-Reactivity:	Human, Rat
Purification:	>95%, Protein G purified

Target Details

Target:	RPE65
Alternative Name:	RPE65 (RPE65 Products)
Background:	Background: Plays important roles in the production of 11-cis retinal and in visual pigment regeneration. The soluble form binds vitamin A (all-trans-retinol), making it available for LRAT

Target Details

processing to all-trans-retinyl ester. The membrane form, palmitoylated by LRAT, binds all-trans-retinyl esters, making them available for IMH (isomerohydrolase) processing to all-cis-retinol. The soluble form is regenerated by transferring its palmitoyl groups onto 11-cis-retinol, a reaction catalyzed by LRAT. The enzymatic activity is linearly dependent of the expression levels and membrane association.

Aliases: All-trans-retinyl-palmitate hydrolase antibody, LCA 2 antibody, LCA2 antibody, Leber congenital amaurosis antibody, mRPE 65 antibody, mRPE65 antibody, p63 antibody, rd 12 antibody, rd12 antibody, Retinal pigment epithelium specific 61 kDa protein antibody, Retinal pigment epithelium specific 65 kDa protein antibody, Retinal pigment epithelium specific protein antibody, Retinal pigment epithelium specific protein 65 kDa antibody, Retinal pigment epithelium-specific 65 kDa protein antibody, Retinitis pigmentosa 20 antibody, Retinoid isomerohydrolase antibody, Retinol isomerase antibody, RP 20 antibody, RP20 antibody, RPE 65 antibody, RPE65 antibody, RPE65_HUMAN antibody, sRPE 65 antibody, sRPE65 antibody

UniProt: [Q16518](#)

Application Details

Application Notes: Recommended dilution: WB:1:500-1:5000, IF:1:200-1:500,

Restrictions: For Research Use only

Handling

Format: Liquid

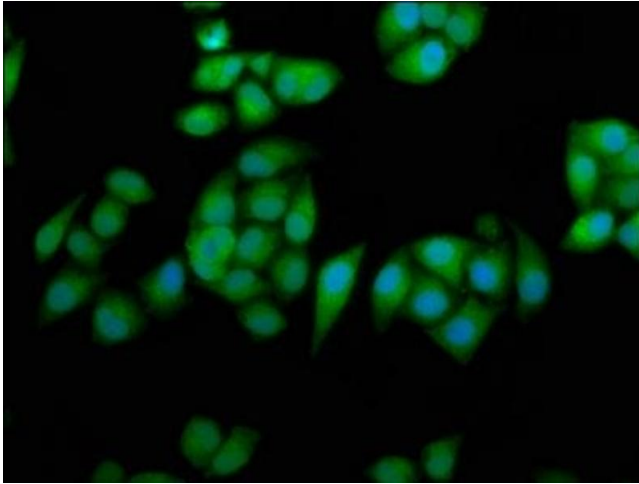
Buffer: Preservative: 0.03 % Proclin 300
Constituents: 50 % Glycerol, 0.01M PBS, pH 7.4

Preservative: ProClin

Precaution of Use: This product contains ProClin: a POISONOUS AND HAZARDOUS SUBSTANCE which should be handled by trained staff only.

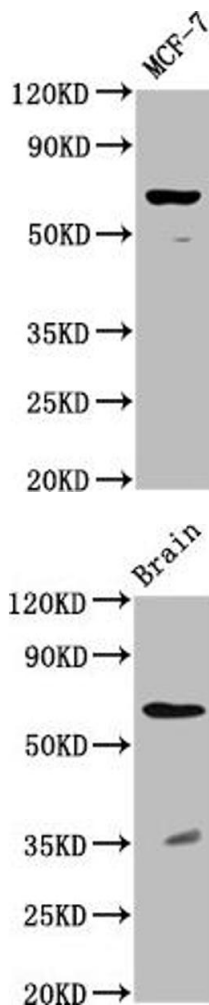
Storage: -20 °C,-80 °C

Storage Comment: Upon receipt, store at -20°C or -80°C. Avoid repeated freeze.



Immunofluorescence

Image 1. Immunofluorescence staining of HeLa cells with ABIN7167824 at 1:233, counter-stained with DAPI. The cells were fixed in 4 % formaldehyde, permeabilized using 0.2 % Triton X-100 and blocked in 10 % normal Goat Serum. The cells were then incubated with the antibody overnight at 4 °C. The secondary antibody was Alexa Fluor 488-conjugated AffiniPure Goat Anti-Rabbit IgG(H+L).



Western Blotting

Image 2. Western Blot Positive WB detected in: MCF-7 whole cell lysate All lanes: RPE65 antibody at 1:2000 Secondary Goat polyclonal to rabbit IgG at 1/50000 dilution Predicted band size: 61 kDa Observed band size: 61 kDa

Western Blotting

Image 3. Western Blot Positive WB detected in: Rat brain tissue All lanes: RPE65 antibody at 2.3 µg/mL Secondary Goat polyclonal to rabbit IgG at 1/50000 dilution Predicted band size: 61 kDa Observed band size: 61 kDa