

Datasheet for ABIN7167832
anti-RDH11 antibody (AA 22-318)[Go to Product page](#)

3 Images

Overview

Quantity:	100 µg
Target:	RDH11
Binding Specificity:	AA 22-318
Reactivity:	Human
Host:	Rabbit
Clonality:	Polyclonal
Conjugate:	This RDH11 antibody is un-conjugated
Application:	ELISA, Western Blotting (WB), Immunohistochemistry (IHC)

Product Details

Immunogen:	Recombinant Human Retinol dehydrogenase 11 protein (22-318AA)
Isotype:	IgG
Cross-Reactivity:	Human
Purification:	>95%, Protein G purified

Target Details

Target:	RDH11
Alternative Name:	RDH11 (RDH11 Products)
Background:	Background: Exhibits an oxidoreductive catalytic activity towards retinoids. Most efficient as an NADPH-dependent retinal reductase. Displays high activity towards 9-cis and all-trans-retinol.

Target Details

Also involved in the metabolism of short-chain aldehydes. No steroid dehydrogenase activity detected.

Aliases: Androgen regulated short chain dehydrogenase/reductase 1 antibody, Androgen-regulated short-chain dehydrogenase/reductase 1 antibody, ARSDR1 antibody, AU045252 antibody, C85936 antibody, CGI 82 antibody, FLJ32633 antibody, HCBP12 antibody, HCV core binding protein antibody, HCV core binding protein HCBP12 antibody, HCV core-binding protein HCBP12 antibody, MDT1 antibody, Prostate short chain dehydrogenase/reductase 1 antibody, Prostate short-chain dehydrogenase/reductase 1 antibody, PSDR1 antibody, RALR1 antibody, RDH11 antibody, RDH11_HUMAN antibody, Retinal reductase 1 antibody, retinol dehydrogenase 11 (all trans/9 cis/11 cis) antibody, Retinol dehydrogenase 11 antibody, SCALD antibody, SDR7C1 antibody, Short chain dehydrogenase/reductase family 7C, member 1 antibody

UniProt: [Q8TC12](#)

Application Details

Application Notes: Recommended dilution: WB:1:1000-1:5000, IHC:1:20-1:200,

Restrictions: For Research Use only

Handling

Format: Liquid

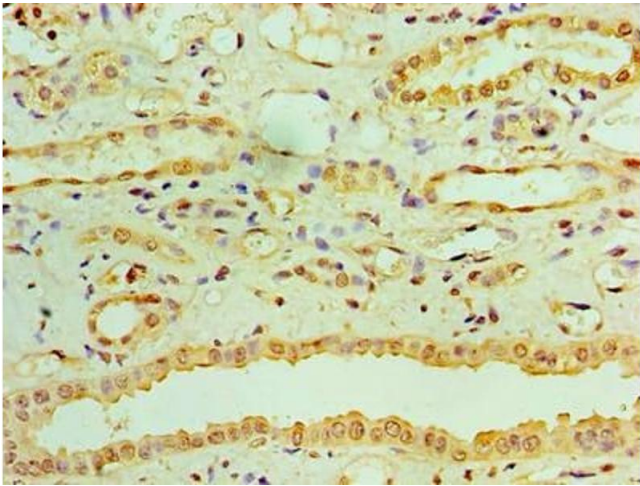
Buffer: Preservative: 0.03 % Proclin 300
Constituents: 50 % Glycerol, 0.01M PBS, PH 7.4

Preservative: ProClin

Precaution of Use: This product contains ProClin: a POISONOUS AND HAZARDOUS SUBSTANCE which should be handled by trained staff only.

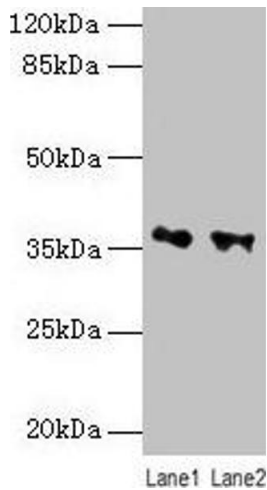
Storage: -20 °C,-80 °C

Storage Comment: Upon receipt, store at -20°C or -80°C. Avoid repeated freeze.



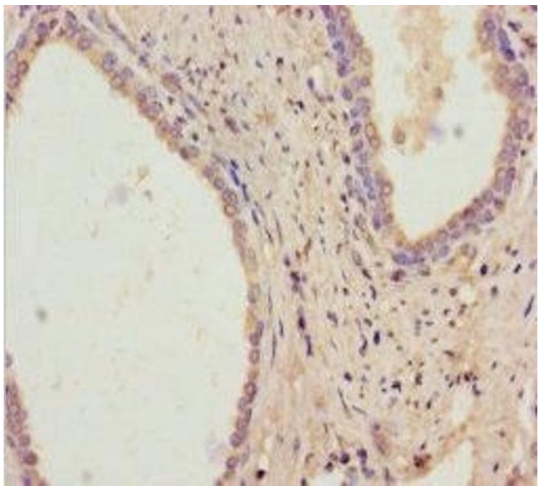
Immunohistochemistry

Image 1. Immunohistochemistry of paraffin-embedded human kidney tissue using ABIN7167832 at dilution of 1:100



Western Blotting

Image 2. Western blot All lanes: RDH11 antibody at 10 μ g/mL Lane 1: PC-3 whole cell lysate Lane 2: HeLa whole cell lysate Secondary Goat polyclonal to rabbit IgG at 1/10000 dilution Predicted band size: 36, 35, 28 kDa Observed band size: 36 kDa



Immunohistochemistry

Image 3. Immunohistochemistry of paraffin-embedded human prostate cancer using ABIN7167832 at dilution of 1:100