



[Go to Product page](#)

Datasheet for ABIN7167852  
**anti-RBP4 antibody (AA 19-201)**

3 Images

### Overview

Quantity:	100 µg
Target:	RBP4
Binding Specificity:	AA 19-201
Reactivity:	Human
Host:	Rabbit
Clonality:	Polyclonal
Conjugate:	This RBP4 antibody is un-conjugated
Application:	Western Blotting (WB), ELISA, Immunohistochemistry (IHC)

### Product Details

Immunogen:	Recombinant Human Retinol-binding protein 4 protein (19-201AA)
Isotype:	IgG
Cross-Reactivity:	Human
Purification:	>95%, Protein G purified

### Target Details

Target:	RBP4
Alternative Name:	RBP4 ( <a href="#">RBP4 Products</a> )
Background:	Background: Delivers retinol from the liver stores to the peripheral tissues. In plasma, the RBP-retinol complex interacts with transthyretin, this prevents its loss by filtration through the kidney

## Target Details

---

glomeruli.

Aliases: OTTHUMP00000020114 antibody, OTTHUMP00000020115 antibody, OTTHUMP00000020116 antibody, Plasma retinol binding protein 4 antibody, Plasma retinol-binding protein antibody, Plasma retinol-binding protein(1-176) antibody, PRBP antibody, PRO2222 antibody, RBP antibody, RBP4 antibody, RDCCAS antibody, RET4\_HUMAN antibody, Retinol binding protein 4 antibody, Retinol binding protein 4 interstitial antibody, Retinol binding protein 4 plasma antibody

UniProt: [P02753](#)

Pathways: [Regulatory RNA Pathways](#), [Positive Regulation of Peptide Hormone Secretion](#), [Carbohydrate Homeostasis](#), [Production of Molecular Mediator of Immune Response](#)

## Application Details

---

Application Notes: Recommended dilution: WB:1:1000-1:5000, IHC:1:20-1:200,

Restrictions: For Research Use only

## Handling

---

Format: Liquid

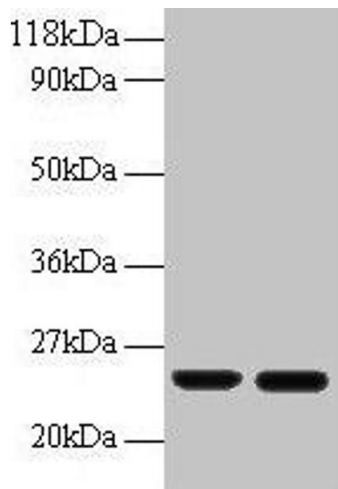
Buffer: Preservative: 0.03 % Proclin 300  
Constituents: 50 % Glycerol, 0.01M PBS, PH 7.4

Preservative: ProClin

Precaution of Use: This product contains ProClin: a POISONOUS AND HAZARDOUS SUBSTANCE which should be handled by trained staff only.

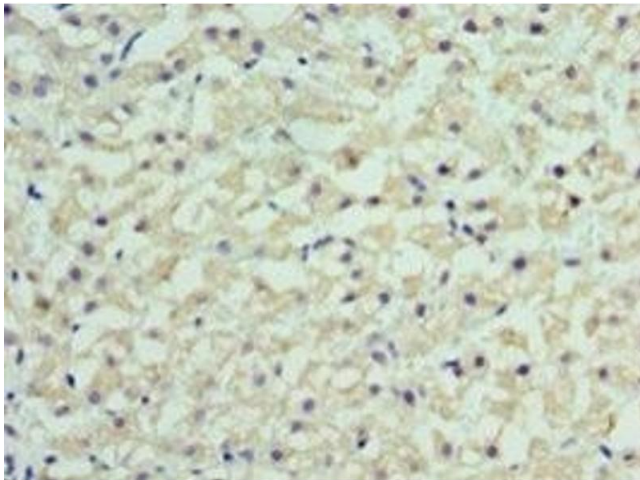
Storage: -20 °C,-80 °C

Storage Comment: Upon receipt, store at -20°C or -80°C. Avoid repeated freeze.



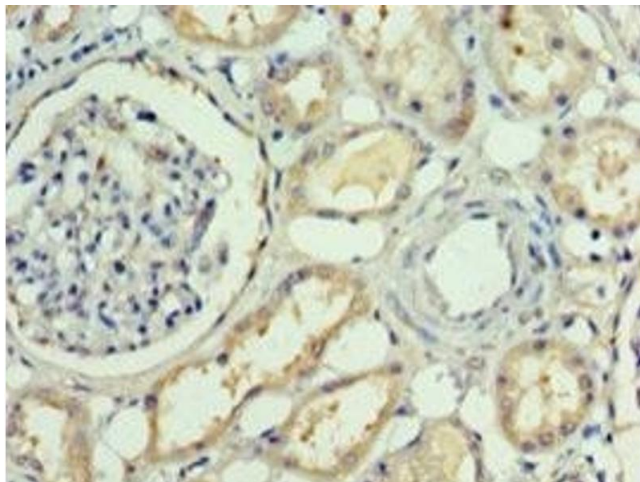
### Western Blotting

**Image 1.** Western blot All lanes: RBP4 antibody at 2  $\mu$ g/mL  
Lane 1: Human positive serum at 1: 10 Lane 2: Human positive serum at 1: 100 Secondary Goat polyclonal to rabbit IgG at 1/50000 dilution Predicted band size: 24 kDa  
Observed band size: 24 kDa



### Immunohistochemistry

**Image 2.** Immunohistochemistry of paraffin-embedded human liver cancer using ABIN7167852 at dilution of 1:100



### Immunohistochemistry

**Image 3.** Immunohistochemistry of paraffin-embedded human kidney tissue using ABIN7167852 at dilution of 1:100