

Datasheet for ABIN7167964
anti-ARHGEF11 antibody (AA 1221-1318)[Go to Product page](#)

1 Image

Overview

Quantity:	100 µg
Target:	ARHGEF11
Binding Specificity:	AA 1221-1318
Reactivity:	Human
Host:	Rabbit
Clonality:	Polyclonal
Conjugate:	This ARHGEF11 antibody is un-conjugated
Application:	ELISA, Immunohistochemistry (IHC)

Product Details

Immunogen:	Recombinant Human Rho guanine nucleotide exchange factor 11 protein (1221-1318AA)
Isotype:	IgG
Cross-Reactivity:	Human
Purification:	>95%, Protein G purified

Target Details

Target:	ARHGEF11
Alternative Name:	ARHGEF11 (ARHGEF11 Products)
Background:	Background: May play a role in the regulation of RhoA GTPase by guanine nucleotide-binding alpha-12 (GNA12) and alpha-13 (GNA13). Acts as guanine nucleotide exchange factor (GEF) for

Target Details

RhoA GTPase and may act as GTPase-activating protein (GAP) for GNA12 and GNA13. Involved in neurotrophin-induced neurite outgrowth.

Aliases: ARHGB_HUMAN antibody, ARHGEF 11 antibody, ARHGEF11 antibody, DKFZp667F1223 antibody, Glutamate transporter EAAT4 associated protein 48 antibody, GTRAP 48 antibody, GTRAP48 antibody, KIAA0380 antibody, OTTHUMP00000038716 antibody, OTTHUMP00000038717 antibody, PDZ RHOGEF antibody, PDZ-RhoGEF antibody, Rho guanine exchange factor (GEF) 11 antibody, Rho guanine nucleotide exchange factor (GEF) 11 antibody, Rho guanine nucleotide exchange factor 11 antibody, RhoA specific guanine nucleotide exchange factor antibody, RhoGEF glutamate transport modulator antibody

UniProt: [O15085](#)

Pathways: [Neurotrophin Signaling Pathway](#), [Regulation of G-Protein Coupled Receptor Protein Signaling](#)

Application Details

Application Notes: Recommended dilution: IHC:1:500-1:1000,

Restrictions: For Research Use only

Handling

Format: Liquid

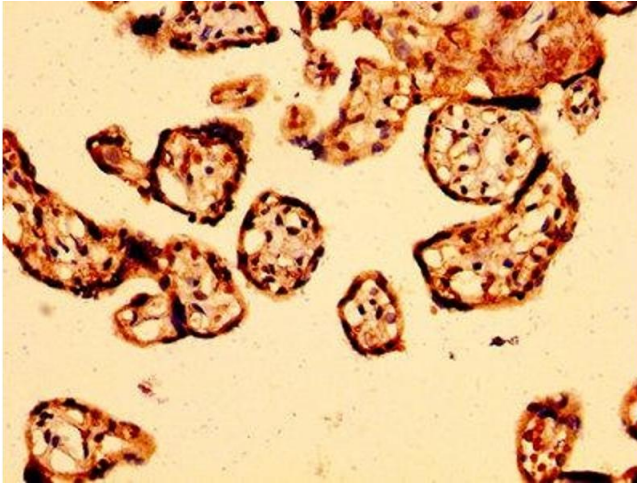
Buffer: Preservative: 0.03 % Proclin 300
Constituents: 50 % Glycerol, 0.01M PBS, pH 7.4

Preservative: ProClin

Precaution of Use: This product contains ProClin: a POISONOUS AND HAZARDOUS SUBSTANCE which should be handled by trained staff only.

Storage: -20 °C,-80 °C

Storage Comment: Upon receipt, store at -20°C or -80°C. Avoid repeated freeze.



Immunohistochemistry

Image 1. IHC image of ABIN7167964 diluted at 1:500 and staining in paraffin-embedded human placenta tissue performed on a Leica Bond™ system. After dewaxing and hydration, antigen retrieval was mediated by high pressure in a citrate buffer (pH 6.0). Section was blocked with 10% normal goat serum 30min at RT. Then primary antibody (1% BSA) was incubated at 4°C overnight. The primary is detected by a biotinylated secondary antibody and visualized using an HRP conjugated SP system.