

Datasheet for ABIN7167972
anti-ARHGEF18 antibody (AA 159-551)[Go to Product page](#)

2 Images

Overview

Quantity:	100 µg
Target:	ARHGEF18
Binding Specificity:	AA 159-551
Reactivity:	Human
Host:	Rabbit
Clonality:	Polyclonal
Conjugate:	This ARHGEF18 antibody is un-conjugated
Application:	ELISA, Immunohistochemistry (IHC), Immunofluorescence (IF)

Product Details

Immunogen:	Recombinant Human Rho guanine nucleotide exchange factor 18 protein (159-551AA)
Isotype:	IgG
Cross-Reactivity:	Human
Purification:	>95%, Protein G purified

Target Details

Target:	ARHGEF18
Alternative Name:	ARHGEF18 (ARHGEF18 Products)
Background:	Background: Acts as guanine nucleotide exchange factor (GEF) for RhoA GTPases. Its activation induces formation of actin stress fibers. Also act as a GEF for RAC1, inducing

Target Details

production of reactive oxygen species (ROS). Does not act as a GEF for CDC42. The G protein beta-gamma (Gbetagamma) subunits of heterotrimeric G proteins act as activators, explaining the integrated effects of LPA and other G-protein coupled receptor agonists on actin stress fiber formation, cell shape change and ROS production. Required for EPB41L4B-mediated regulation of the circumferential actomyosin belt in epithelial cells (PubMed:22006950).

Aliases: 114 kDa Rho specific guanine nucleotide exchange factor antibody, 114 kDa Rho-specific guanine nucleotide exchange factor antibody, ARHGEF 18 antibody, Arhgef18 antibody, ARHGL_HUMAN antibody, KIAA0521 antibody, MGC15913 antibody, p114 Rho GEF antibody, p114-Rho-GEF antibody, p114RhoGEF antibody, Rho guanine nucleotide exchange factor 18 antibody, Rho specific guanine nucleotide exchange factor p114 antibody, Rho/Rac guanine nucleotide exchange factor (GEF) 18 antibody, Rho/Rac guanine nucleotide exchange factor 18 antibody, SA RhoGEF antibody, SA-RhoGEF antibody, Septin associated RhoGEF antibody, Septin-associated RhoGEF antibody

UniProt: [Q6ZSZ5](#)

Pathways: [Neurotrophin Signaling Pathway](#)

Application Details

Application Notes: Recommended dilution: IHC:1:200-1:500, IF:1:50-1:200,

Restrictions: For Research Use only

Handling

Format: Liquid

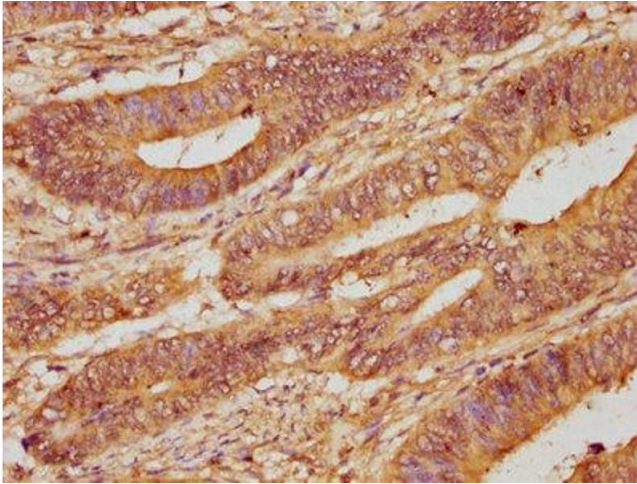
Buffer: Preservative: 0.03 % Proclin 300
Constituents: 50 % Glycerol, 0.01M PBS, PH 7.4

Preservative: ProClin

Precaution of Use: This product contains ProClin: a POISONOUS AND HAZARDOUS SUBSTANCE which should be handled by trained staff only.

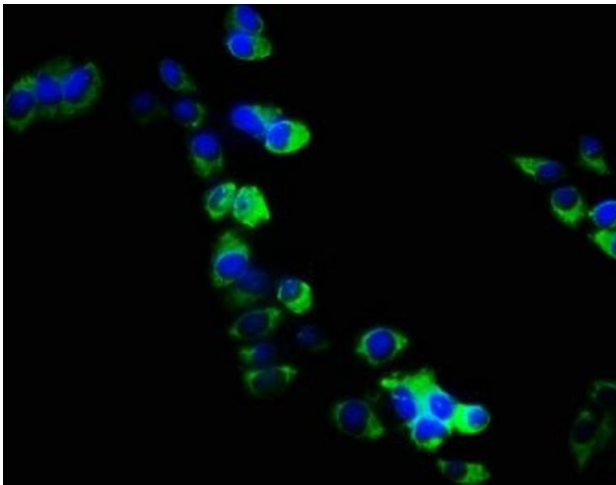
Storage: -20 °C,-80 °C

Storage Comment: Upon receipt, store at -20°C or -80°C. Avoid repeated freeze.



Immunohistochemistry

Image 1. IHC image of ABIN7167972 diluted at 1:200 and staining in paraffin-embedded human colon cancer performed on a Leica Bond™ system. After dewaxing and hydration, antigen retrieval was mediated by high pressure in a citrate buffer (pH 6.0). Section was blocked with 10 % normal goat serum 30 min at RT. Then primary antibody (1 % BSA) was incubated at 4 °C overnight. The primary is detected by a biotinylated secondary antibody and visualized using an HRP conjugated SP system.



Immunofluorescence

Image 2. Immunofluorescence staining of PC3 cells with ABIN7167972 at 1:133, counter-stained with DAPI. The cells were fixed in 4 % formaldehyde, permeabilized using 0.2 % Triton X-100 and blocked in 10 % normal Goat Serum. The cells were then incubated with the antibody overnight at 4 °C. The secondary antibody was Alexa Fluor 488-conjugated AffiniPure Goat Anti-Rabbit IgG(H+L).