

Datasheet for ABIN7167973
anti-ARHGEF18 antibody (AA 159-551)[Go to Product page](#)

1 Image

Overview

Quantity:	100 µg
Target:	ARHGEF18
Binding Specificity:	AA 159-551
Reactivity:	Human
Host:	Rabbit
Clonality:	Polyclonal
Application:	ELISA, Western Blotting (WB)

Product Details

Immunogen:	Recombinant Human Rho guanine nucleotide exchange factor 18 protein (159-551AA)
Isotype:	IgG
Cross-Reactivity:	Human
Purification:	>95%, Protein G purified

Target Details

Target:	ARHGEF18
Alternative Name:	ARHGEF18 (ARHGEF18 Products)
Background:	Background: Rho GTPases are GTP binding proteins that regulate a wide spectrum of cellular functions. These cellular processes include cytoskeletal rearrangements, gene transcription, cell growth and motility. Activation of Rho GTPases is under the direct control of guanine nucleotide exchange factors (GEFs). p114RgoGEF acts as guanine nucleotide exchange factor

Target Details

(GEF) for RhoA GTPases. It may play a role in actin cytoskeleton reorganization in different tissues since its activation induces formation of actin stress fibers. It also act as a GEF for RAC1, inducing production of reactive oxygen species (ROS), but does not act as a GEF for CDC42. The G protein beta-gamma (Gbetagamma) subunits of heterotrimeric G proteins act as activators, explaining the integrated effects of LPA and other G-protein coupled receptor agonists on actin stress fiber formation, cell shape change and ROS production.

Aliases: 114 kDa Rho specific guanine nucleotide exchange factor antibody, 114 kDa Rho-specific guanine nucleotide exchange factor antibody, ARHGEF 18 antibody, Arhgef18 antibody, ARHGI_HUMAN antibody, KIAA0521 antibody, MGC15913 antibody, p114 Rho GEF antibody, p114-Rho-GEF antibody, p114RhoGEF antibody, Rho guanine nucleotide exchange factor 18 antibody, Rho specific guanine nucleotide exchange factor p114 antibody, Rho/Rac guanine nucleotide exchange factor (GEF) 18 antibody, Rho/Rac guanine nucleotide exchange factor 18 antibody, SA RhoGEF antibody, SA-RhoGEF antibody, Septin associated RhoGEF antibody, Septin-associated RhoGEF antibody

UniProt: [Q6ZSZ5](#)

Pathways: [Neurotrophin Signaling Pathway](#)

Application Details

Application Notes: Recommended dilution: WB:1:1000-1:5000,

Restrictions: For Research Use only

Handling

Format: Liquid

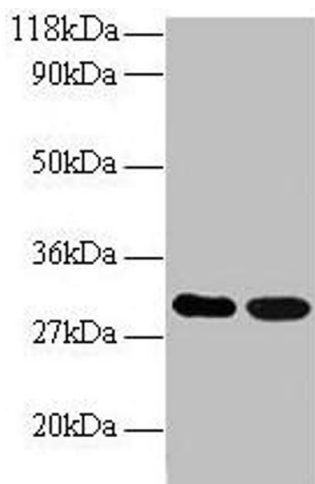
Buffer: Preservative: 0.03 % Proclin 300
Constituents: 50 % Glycerol, 0.01M PBS, PH 7.4

Preservative: ProClin

Precaution of Use: This product contains ProClin: a POISONOUS AND HAZARDOUS SUBSTANCE which should be handled by trained staff only.

Storage: -20 °C,-80 °C

Storage Comment: Upon receipt, store at -20°C or -80°C. Avoid repeated freeze.



Western Blotting

Image 1. Western blot All lanes: ARHGEF18 antibody at 2 μ g/mL Lane 1: EC109 whole cell lysate Lane 2: 293T whole cell lysate Secondary Goat polyclonal to rabbit IgG at 1/15000 dilution Predicted band size: 131, 115 kDa Observed band size: 30 kDa