

Datasheet for ABIN7167990

**anti-ARHGEF6 antibody (AA 108-239)**[Go to Product page](#)**1** Image

## Overview

Quantity:	100 µg
Target:	ARHGEF6
Binding Specificity:	AA 108-239
Reactivity:	Human
Host:	Rabbit
Clonality:	Polyclonal
Conjugate:	This ARHGEF6 antibody is un-conjugated
Application:	ELISA, Immunohistochemistry (IHC)

## Product Details

Immunogen:	Recombinant Human Rho guanine nucleotide exchange factor 6 protein (108-239AA)
Isotype:	IgG
Cross-Reactivity:	Human
Purification:	>95%, Protein G purified

## Target Details

Target:	ARHGEF6
Alternative Name:	ARHGEF6 ( <a href="#">ARHGEF6 Products</a> )
Background:	Background: Acts as a RAC1 guanine nucleotide exchange factor (GEF). Aliases: Alpha Pix antibody, Alpha-Pix antibody, ARHG6_HUMAN antibody, ARHGEF6 antibody,

## Target Details

COOL 2 antibody, COOL-2 antibody, COOL2 antibody, Mental retardation, X linked 46 antibody, MRX46 antibody, PAK interacting exchange factor alpha antibody, PAK-interacting exchange factor alpha antibody, PIXA antibody, Rac/Cdc42 guanine exchange factor (GEF) 6 antibody, Rac/Cdc42 guanine nucleotide exchange factor (GEF) 6 antibody, Rac/Cdc42 guanine nucleotide exchange factor 6 antibody, Rho guanine nucleotide exchange factor 6 antibody

UniProt: [Q15052](#)

Pathways: [Neurotrophin Signaling Pathway](#)

## Application Details

Application Notes: Recommended dilution: IHC:1:200-1:500,

Restrictions: For Research Use only

## Handling

Format: Liquid

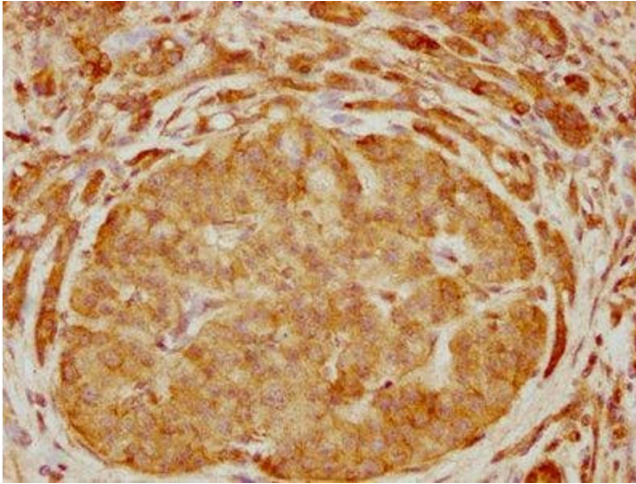
Buffer: Preservative: 0.03 % Proclin 300  
Constituents: 50 % Glycerol, 0.01M PBS, pH 7.4

Preservative: ProClin

Precaution of Use: This product contains ProClin: a POISONOUS AND HAZARDOUS SUBSTANCE which should be handled by trained staff only.

Storage: -20 °C, -80 °C

Storage Comment: Upon receipt, store at -20°C or -80°C. Avoid repeated freeze.



#### Immunohistochemistry

**Image 1.** IHC image of ABIN7167990 diluted at 1:400 and staining in paraffin-embedded human pancreatic cancer performed on a Leica Bond™ system. After dewaxing and hydration, antigen retrieval was mediated by high pressure in a citrate buffer (pH 6.0). Section was blocked with 10% normal goat serum 30min at RT. Then primary antibody (1% BSA) was incubated at 4°C overnight. The primary is detected by a biotinylated secondary antibody and visualized using an HRP conjugated SP system.