

Datasheet for ABIN7167999

anti-ROCK1 antibody (AA 405-668)[Go to Product page](#)**3** Images

Overview

Quantity:	100 µL
Target:	ROCK1
Binding Specificity:	AA 405-668
Reactivity:	Human
Host:	Rabbit
Clonality:	Polyclonal
Conjugate:	This ROCK1 antibody is un-conjugated
Application:	Western Blotting (WB), ELISA, Immunohistochemistry (IHC), Immunofluorescence (IF)

Product Details

Immunogen:	Recombinant Human Rho-associated protein kinase 1 protein (405-668AA)
Isotype:	IgG
Cross-Reactivity:	Human
Purification:	>95%, Protein G purified

Target Details

Target:	ROCK1
Alternative Name:	ROCK1 (ROCK1 Products)
Background:	Background: Protein kinase which is a key regulator of actin cytoskeleton and cell polarity. Involved in regulation of smooth muscle contraction, actin cytoskeleton organization, stress

Target Details

fiber and focal adhesion formation, neurite retraction, cell adhesion and motility via phosphorylation of DAPK3, GFAP, LIMK1, LIMK2, MYL9/MLC2, PFN1 and PPP1R12A. Phosphorylates FHOD1 and acts synergistically with it to promote SRC-dependent non-apoptotic plasma membrane blebbing. Phosphorylates JIP3 and regulates the recruitment of JNK to JIP3 upon UVB-induced stress. Acts as a suppressor of inflammatory cell migration by regulating PTEN phosphorylation and stability. Acts as a negative regulator of VEGF-induced angiogenic endothelial cell activation. Required for centrosome positioning and centrosome-dependent exit from mitosis. Plays a role in terminal erythroid differentiation. May regulate closure of the eyelids and ventral body wall by inducing the assembly of actomyosin bundles. Promotes keratinocyte terminal differentiation. Involved in osteoblast compaction through the fibronectin fibrillogenesis cell-mediated matrix assembly process, essential for osteoblast mineralization.

Aliases: coiled-coil-containing protein kinase 1 antibody, coiled-coil-containing protein kinase I antibody, MGC131603 antibody, MGC43611 antibody, p160 Rhoassociated coiled coil-forming protein kinase antibody, p160 ROCK-1 antibody, p160 ROCK1 antibody, p160ROCK antibody, PRO0435 antibody, Renal carcinoma antigen NY REN 35 antibody, Renal carcinoma antigen NY-REN-35 antibody, Rho associated coiled coil containing protein kinase 1 antibody, Rho associated protein kinase 1 antibody, Rho kinase antibody, Rho-alpha kinase antibody, Rho-associated antibody, Rho-associated protein kinase 1 antibody, ROCK I antibody, ROCK-I antibody, ROCK1 antibody, ROCK1_HUMAN antibody, Rok antibody, rokalpha antibody

UniProt:	Q13464
Pathways:	Microtubule Dynamics , WNT Signaling , M Phase , Maintenance of Protein Location , Signaling Events mediated by VEGFR1 and VEGFR2 , Thromboxane A2 Receptor Signaling

Application Details

Application Notes:	Recommended dilution: WB:1:1000-1:5000, IHC:1:200-1:500, IF:1:50-1:200,
Restrictions:	For Research Use only

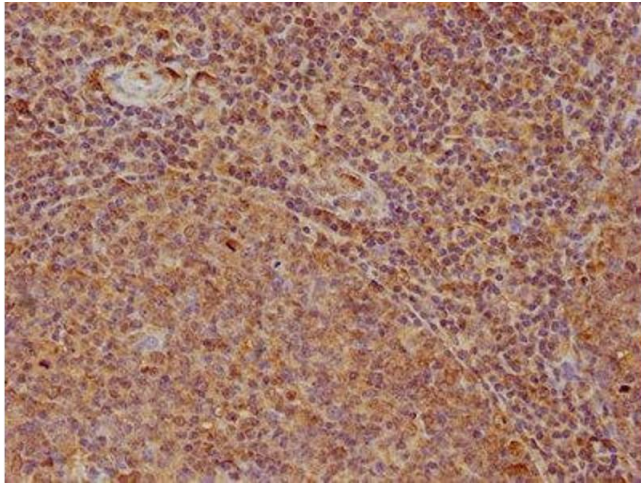
Handling

Format:	Liquid
Buffer:	Preservative: 0.03 % Proclin 300 Constituents: 50 % Glycerol, 0.01M PBS, pH 7.4
Preservative:	ProClin

Handling

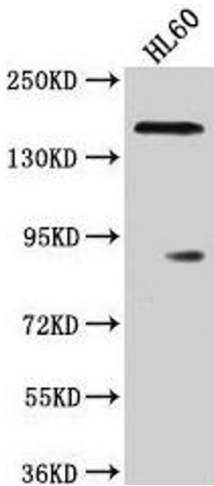
Precaution of Use:	This product contains ProClin: a POISONOUS AND HAZARDOUS SUBSTANCE which should be handled by trained staff only.
Storage:	-20 °C,-80 °C
Storage Comment:	Upon receipt, store at -20°C or -80°C. Avoid repeated freeze.

Images



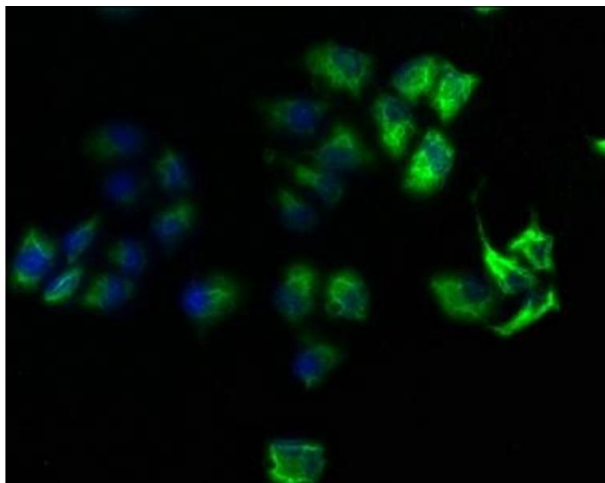
Immunohistochemistry

Image 1. IHC image of ABIN7167999 diluted at 1:200 and staining in paraffin-embedded human tonsil tissue performed on a Leica Bond™ system. After dewaxing and hydration, antigen retrieval was mediated by high pressure in a citrate buffer (pH 6.0). Section was blocked with 10% normal goat serum 30min at RT. Then primary antibody (1% BSA) was incubated at 4°C overnight. The primary is detected by a biotinylated secondary antibody and visualized using an HRP conjugated SP system.



Western Blotting

Image 2. Western Blot Positive WB detected in: HL60 whole cell lysate All lanes: ROCK1 antibody at 1:2000 Secondary Goat polyclonal to rabbit IgG at 1/50000 dilution Predicted band size: 159 kDa Observed band size: 159 kDa



Immunofluorescence

Image 3. Immunofluorescence staining of HeLa cells with ABIN7167999 at 1:100, counter-stained with DAPI. The cells were fixed in 4% formaldehyde, permeabilized using 0.2% Triton X-100 and blocked in 10% normal Goat Serum. The cells were then incubated with the antibody overnight at 4°C. The secondary antibody was Alexa Fluor 488-conjugated AffiniPure Goat Anti-Rabbit IgG(H+L).