

Datasheet for ABIN7168014
anti-RND1 antibody (AA 1-106)[Go to Product page](#)

2 Images

Overview

Quantity:	100 µg
Target:	RND1
Binding Specificity:	AA 1-106
Reactivity:	Human
Host:	Rabbit
Clonality:	Polyclonal
Conjugate:	This RND1 antibody is un-conjugated
Application:	Immunohistochemistry (IHC), ELISA, Immunofluorescence (IF)

Product Details

Immunogen:	Recombinant Human Rho-related GTP-binding protein Rho6 protein (1-106AA)
Isotype:	IgG
Cross-Reactivity:	Human
Purification:	>95%, Protein G purified

Target Details

Target:	RND1
Alternative Name:	RND1 (RND1 Products)
Background:	Background: Lacks intrinsic GTPase activity. Has a low affinity for GDP, and constitutively binds GTP. Controls rearrangements of the actin cytoskeleton. Induces the Rac-dependent neuritic

Target Details

process formation in part by disruption of the cortical actin filaments. Causes the formation of many neuritic processes from the cell body with disruption of the cortical actin filaments.

Aliases: ARHS antibody, FLJ42294 antibody, GTP binding protein RHO6 antibody, Ras homolog gene family member S antibody, RHO 6 antibody, Rho family GTPase 1 antibody, Rho related GTP binding protein Rho6 antibody, RHO S antibody, Rho-related GTP-binding protein Rho6 antibody, RHO6 antibody, RHOS antibody, RND 1 antibody, Rnd1 antibody, RND1_HUMAN antibody

UniProt: [Q92730](#)

Application Details

Application Notes: Recommended dilution: IHC:1:200-1:500, IF:1:50-1:200,

Restrictions: For Research Use only

Handling

Format: Liquid

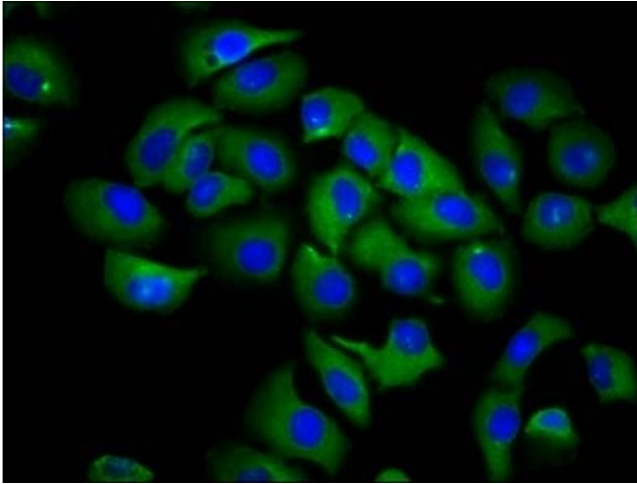
Buffer: Preservative: 0.03 % Proclin 300
Constituents: 50 % Glycerol, 0.01M PBS, pH 7.4

Preservative: ProClin

Precaution of Use: This product contains ProClin: a POISONOUS AND HAZARDOUS SUBSTANCE which should be handled by trained staff only.

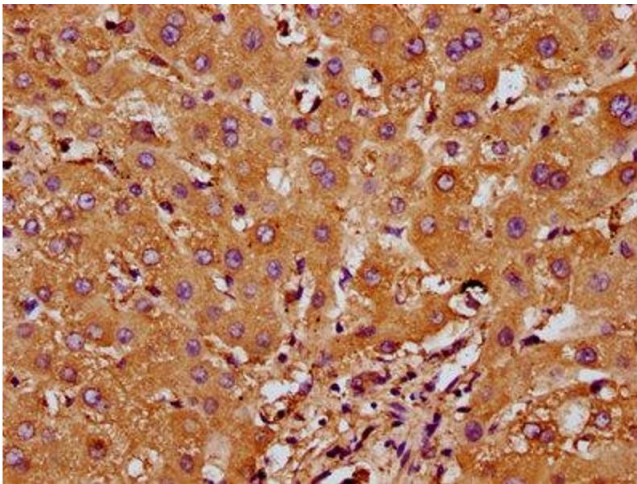
Storage: -20 °C, -80 °C

Storage Comment: Upon receipt, store at -20°C or -80°C. Avoid repeated freeze.



Immunofluorescence

Image 1. Immunofluorescence staining of A549 cells with ABIN7168014 at 1:66, counter-stained with DAPI. The cells were fixed in 4% formaldehyde, permeabilized using 0.2% Triton X-100 and blocked in 10% normal Goat Serum. The cells were then incubated with the antibody overnight at 4°C. The secondary antibody was Alexa Fluor 488-conjugated AffiniPure Goat Anti-Rabbit IgG(H+L).



Immunohistochemistry

Image 2. IHC image of ABIN7168014 diluted at 1:200 and staining in paraffin-embedded human liver tissue performed on a Leica Bond™ system. After dewaxing and hydration, antigen retrieval was mediated by high pressure in a citrate buffer (pH 6.0). Section was blocked with 10% normal goat serum 30min at RT. Then primary antibody (1% BSA) was incubated at 4°C overnight. The primary is detected by a biotinylated secondary antibody and visualized using an HRP conjugated SP system.