

Datasheet for ABIN7168026
anti-RHOD antibody (AA 1-80)[Go to Product page](#)

1 Image

Overview

Quantity:	100 µg
Target:	RHOD
Binding Specificity:	AA 1-80
Reactivity:	Human
Host:	Rabbit
Clonality:	Polyclonal
Conjugate:	This RHOD antibody is un-conjugated
Application:	ELISA, Immunofluorescence (IF)

Product Details

Immunogen:	Recombinant Human Rho-related GTP-binding protein RhoD protein (1-80AA)
Isotype:	IgG
Cross-Reactivity:	Human
Purification:	>95%, Protein G purified

Target Details

Target:	RHOD
Alternative Name:	RHOD (RHOD Products)
Background:	Background: Involved in endosome dynamics. May coordinate membrane transport with the function of the cytoskeleton. Involved in the internalization and trafficking of activated tyrosine

Target Details

kinase receptors such as PDGFRB. Participates in the reorganization of actin cytoskeleton, the function seems to involve WHAMM and includes regulation of filopodia formation and actin filament bundling. Can modulate the effect of DAPK3 in reorganization of actin cytoskeleton and focal adhesion dissolution.

Aliases: ARHD antibody, Ras homolog D antibody, Ras homolog gene family member A antibody, Ras homolog gene family member D antibody, Rho antibody, RHO D antibody, Rho related GTP binding protein RhoD antibody, Rho related protein HP1 antibody, Rho-related GTP-binding protein RhoD antibody, Rho-related protein HP1 antibody, RHOD antibody, RHOD_HUMAN antibody, RhoHP1 antibody, RHOM antibody

UniProt: [O00212](#)

Application Details

Application Notes: Recommended dilution: IF:1:50-1:200,

Restrictions: For Research Use only

Handling

Format: Liquid

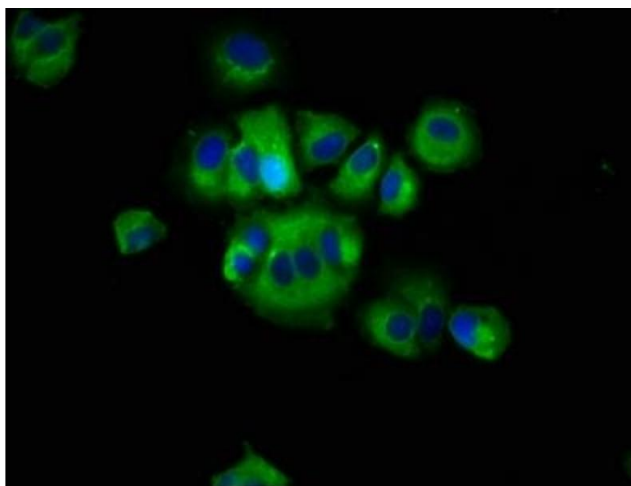
Buffer: Preservative: 0.03 % Proclin 300
Constituents: 50 % Glycerol, 0.01M PBS, pH 7.4

Preservative: ProClin

Precaution of Use: This product contains ProClin: a POISONOUS AND HAZARDOUS SUBSTANCE which should be handled by trained staff only.

Storage: -20 °C, -80 °C

Storage Comment: Upon receipt, store at -20°C or -80°C. Avoid repeated freeze.



Immunofluorescence

Image 1. Immunofluorescence staining of MCF-7 cells with ABIN7168026 at 1:66, counter-stained with DAPI. The cells were fixed in 4% formaldehyde, permeabilized using 0.2% Triton X-100 and blocked in 10% normal Goat Serum. The cells were then incubated with the antibody overnight at 4°C. The secondary antibody was Alexa Fluor 488-conjugated AffiniPure Goat Anti-Rabbit IgG(H+L).