

Datasheet for ABIN7168034
anti-RhoF antibody (AA 1-170)[Go to Product page](#)

3 Images

Overview

Quantity:	100 µg
Target:	RhoF (RHOF)
Binding Specificity:	AA 1-170
Reactivity:	Human
Host:	Rabbit
Clonality:	Polyclonal
Conjugate:	This RhoF antibody is un-conjugated
Application:	Western Blotting (WB), ELISA, Immunohistochemistry (IHC)

Product Details

Immunogen:	Recombinant Human Rho-related GTP-binding protein RhoF protein (1-170AA)
Isotype:	IgG
Cross-Reactivity:	Human, Mouse
Purification:	>95%, Protein G purified

Target Details

Target:	RhoF (RHOF)
Alternative Name:	RHOF (RHOF Products)
Background:	Background: Plasma membrane-associated small GTPase which cycles between an active GTP-bound and an inactive GDP-bound state. Causes the formation of thin, actin-rich surface

Target Details

projections called filopodia. Functions cooperatively with CDC42 and Rac to generate additional structures, increasing the diversity of actin-based morphology.

Aliases: ARHF antibody, FLJ20247 antibody, Ras homolog gene family member F (in filopodia) antibody, Ras homolog gene family member F antibody, Rho F antibody, Rho family GTPase RhoF antibody, Rho in filopodia antibody, Rho related GTP binding protein RhoF antibody, Rho-related GTP-binding protein RhoF antibody, Rhof antibody, RHOF_HUMAN antibody, RIF antibody

UniProt: [Q9HBH0](#)

Application Details

Application Notes: Recommended dilution: WB:1:1000-1:5000, IHC:1:20-1:200,

Restrictions: For Research Use only

Handling

Format: Liquid

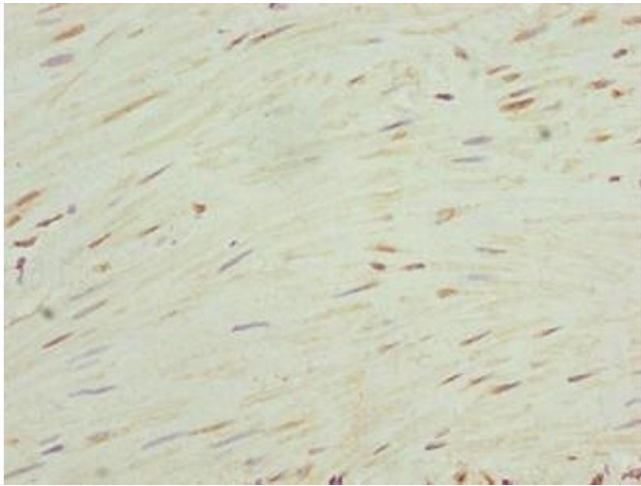
Buffer: Preservative: 0.03 % Proclin 300
Constituents: 50 % Glycerol, 0.01M PBS, PH 7.4

Preservative: ProClin

Precaution of Use: This product contains ProClin: a POISONOUS AND HAZARDOUS SUBSTANCE which should be handled by trained staff only.

Storage: -20 °C, -80 °C

Storage Comment: Upon receipt, store at -20°C or -80°C. Avoid repeated freeze.



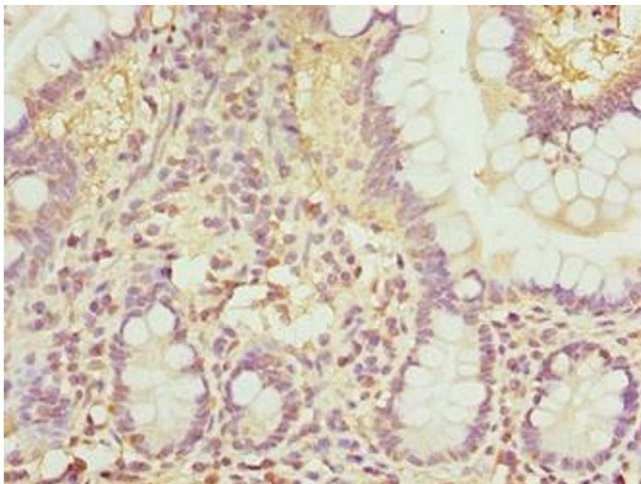
Immunohistochemistry

Image 1. Immunohistochemistry of paraffin-embedded human colon cancer using ABIN7168034 at dilution of 1:100



Western Blotting

Image 2. Western blot All lanes: RHO antibody at 3 µg/mL
Lane 1: Colo320 whole cell lysate Lane 2: RAW264.7 whole cell lysate
Secondary Goat polyclonal to rabbit IgG at 1/10000 dilution Predicted band size: 24, 19 kDa Observed band size: 24 kDa



Immunohistochemistry

Image 3. Immunohistochemistry of paraffin-embedded human small intestine tissue using ABIN7168034 at dilution of 1:100