

Datasheet for ABIN7168042
anti-RHOJ antibody (AA 1-211)[Go to Product page](#)

1 Image

Overview

Quantity:	100 µg
Target:	RHOJ
Binding Specificity:	AA 1-211
Reactivity:	Human
Host:	Rabbit
Clonality:	Polyclonal
Conjugate:	This RHOJ antibody is un-conjugated
Application:	ELISA, Immunohistochemistry (IHC)

Product Details

Immunogen:	Recombinant Human Rho-related GTP-binding protein RhoJ protein (1-211AA)
Isotype:	IgG
Cross-Reactivity:	Human
Purification:	>95%, Protein G purified

Target Details

Target:	RHOJ
Alternative Name:	RHOJ (RHOJ Products)
Background:	Background: GTP-binding protein with GTPase activity. Elicits the formation of F-actin-rich structures in fibroblasts and is involved in the regulation of cell morphology.

Target Details

Aliases: ARHJ antibody, Ras homolog family member J antibody, Ras homolog gene family member J antibody, RAS like family 7 member B antibody, Ras like protein family member 7B antibody, Ras-like protein family member 7B antibody, RASL 7B antibody, RASL7B antibody, Rho related GTP binding protein RhoJ antibody, Rho-related GTP-binding protein RhoJ antibody, RHOI antibody, Rhoj antibody, RHOJ_HUMAN antibody, Tc10 like GTP binding protein TCL antibody, TC10 like Rho GTPase antibody, Tc10-like GTP-binding protein antibody, TC10B antibody, TCL antibody

UniProt: [Q9H4E5](#)

Application Details

Application Notes: Recommended dilution: IHC:1:20-1:200,

Restrictions: For Research Use only

Handling

Format: Liquid

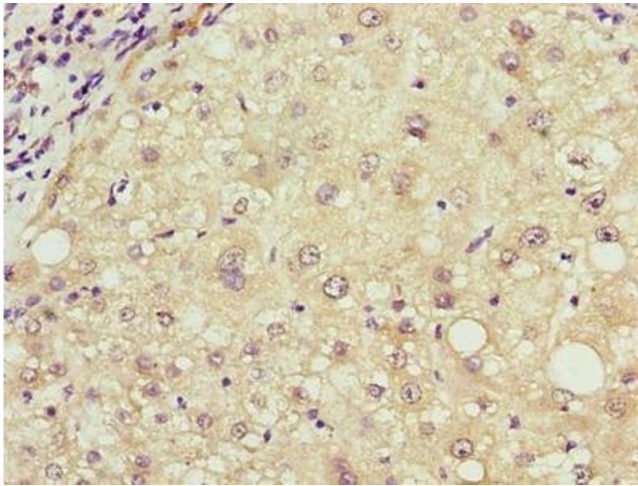
Buffer: Preservative: 0.03 % Proclin 300
Constituents: 50 % Glycerol, 0.01M PBS, PH 7.4

Preservative: ProClin

Precaution of Use: This product contains ProClin: a POISONOUS AND HAZARDOUS SUBSTANCE which should be handled by trained staff only.

Storage: -20 °C,-80 °C

Storage Comment: Upon receipt, store at -20°C or -80°C. Avoid repeated freeze.



Immunohistochemistry

Image 1. Immunohistochemistry of paraffin-embedded human liver cancer using ABIN7168042 at dilution of 1:100