

Datasheet for ABIN7168050
anti-RHOU antibody (AA 1-48)[Go to Product page](#)

3 Images

Overview

Quantity:	100 µg
Target:	RHOU
Binding Specificity:	AA 1-48
Reactivity:	Human
Host:	Rabbit
Clonality:	Polyclonal
Conjugate:	This RHOU antibody is un-conjugated
Application:	ELISA, Immunohistochemistry (IHC), Immunofluorescence (IF)

Product Details

Immunogen:	Recombinant Human Rho-related GTP-binding protein RhoU protein (1-48AA)
Isotype:	IgG
Cross-Reactivity:	Human
Purification:	>95%, Protein G purified

Target Details

Target:	RHOU
Alternative Name:	RHOU (RHOU Products)
Background:	Background: Acts upstream of PAK1 to regulate the actin cytoskeleton, adhesion turnover and increase cell migration. Stimulates quiescent cells to reenter the cell cycle. Has no detectable

Target Details

GTPase activity but its high intrinsic guanine nucleotide exchange activity suggests it is constitutively GTP-bound. Plays a role in the regulation of cell morphology and cytoskeletal organization. Required in the control of cell shape.

Aliases: ARHU antibody, CDC42 L1 antibody, CDC42 like GTPase antibody, CDC42-like GTPase 1 antibody, CDC42L1 antibody, G28K antibody, GTP binding protein like 1 antibody, GTP binding protein SB128 antibody, GTP-binding protein-like 1 antibody, hG28K antibody, mG28K antibody, Ras homolog gene family member U antibody, Ras homolog gene family member U isoform CRA a antibody, Ras like gene family member U antibody, Rho GTPase like protein ARHU antibody, Rho GTPase-like protein ARHU antibody, Rho related GTP binding protein RhoU antibody, Rho-related GTP-binding protein RhoU antibody, Rhou antibody, RHOU_HUMAN antibody, Ryu GTPase antibody, Wnt-1 responsive Cdc42 homolog 1 antibody, Wnt1 responsive Cdc42 homolog antibody, WRCH 1 antibody, WRCH-1 antibody

UniProt: [Q7L0Q8](#)

Application Details

Application Notes: Recommended dilution: IHC:1:500-1:1000, IF:1:50-1:200,

Restrictions: For Research Use only

Handling

Format: Liquid

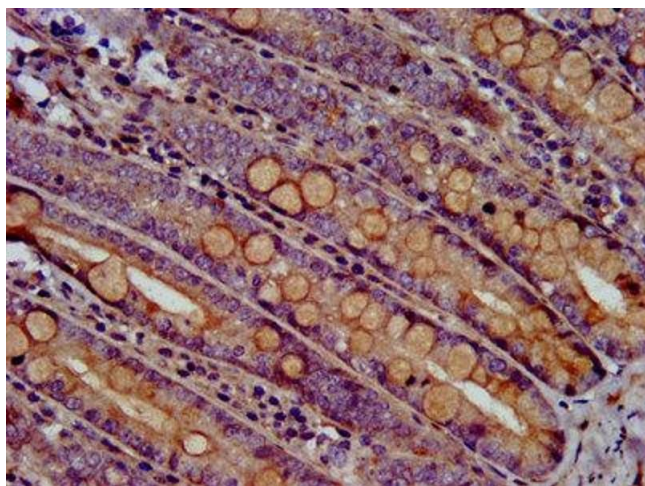
Buffer: Preservative: 0.03 % Proclin 300
Constituents: 50 % Glycerol, 0.01M PBS, pH 7.4

Preservative: ProClin

Precaution of Use: This product contains ProClin: a POISONOUS AND HAZARDOUS SUBSTANCE which should be handled by trained staff only.

Storage: -20 °C, -80 °C

Storage Comment: Upon receipt, store at -20°C or -80°C. Avoid repeated freeze.



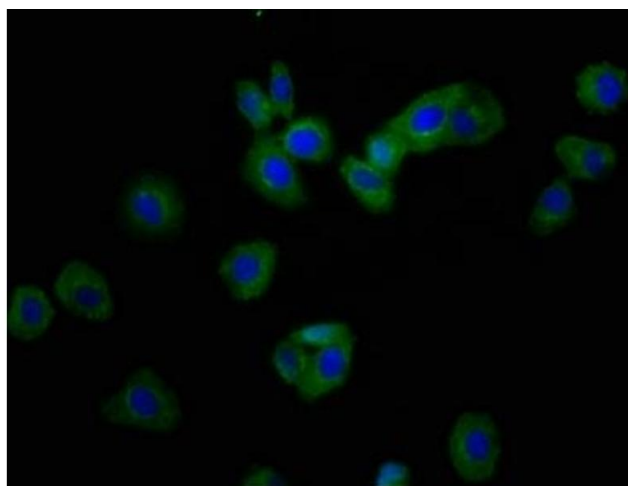
Immunohistochemistry

Image 1. IHC image of ABIN7168050 diluted at 1:500 and staining in paraffin-embedded human small intestine tissue performed on a Leica Bond™ system. After dewaxing and hydration, antigen retrieval was mediated by high pressure in a citrate buffer (pH 6.0). Section was blocked with 10% normal goat serum 30min at RT. Then primary antibody (1% BSA) was incubated at 4°C overnight. The primary is detected by a biotinylated secondary antibody and visualized using an HRP conjugated SP system.



Immunohistochemistry

Image 2. IHC image of ABIN7168050 diluted at 1:500 and staining in paraffin-embedded human skeletal muscle tissue performed on a Leica Bond™ system. After dewaxing and hydration, antigen retrieval was mediated by high pressure in a citrate buffer (pH 6.0). Section was blocked with 10% normal goat serum 30min at RT. Then primary antibody (1% BSA) was incubated at 4°C overnight. The primary is detected by a biotinylated secondary antibody and visualized using an HRP conjugated SP system.



Immunofluorescence

Image 3. Immunofluorescence staining of HepG2 cells with ABIN7168050 at 1:166, counter-stained with DAPI. The cells were fixed in 4% formaldehyde, permeabilized using 0.2% Triton X-100 and blocked in 10% normal Goat Serum. The cells were then incubated with the antibody overnight at 4°C. The secondary antibody was Alexa Fluor 488-conjugated AffiniPure Goat Anti-Rabbit IgG(H+L).