

Datasheet for ABIN7168054
anti-GRK7 antibody (AA 342-550)[Go to Product page](#)

1 Image

Overview

Quantity:	100 µL
Target:	GRK7
Binding Specificity:	AA 342-550
Reactivity:	Human
Host:	Rabbit
Clonality:	Polyclonal
Conjugate:	This GRK7 antibody is un-conjugated
Application:	ELISA, Immunofluorescence (IF)

Product Details

Immunogen:	Recombinant Human Rhodopsin kinase protein (342-550AA)
Isotype:	IgG
Cross-Reactivity:	Human
Purification:	>95%, Antigen Affinity purified & Affinity purified

Target Details

Target:	GRK7
Alternative Name:	GRK7 (GRK7 Products)
Background:	Background: Retina-specific kinase involved in the shutoff of the photoresponse and adaptation to changing light conditions via cone opsin phosphorylation, including rhodopsin (RHO).

Target Details

Aliases: GRK7 antibody, GPRK7 antibody, Rhodopsin kinase GRK7 antibody, EC 2.7.11.14 antibody, G protein-coupled receptor kinase 7 antibody, G protein-coupled receptor kinase GRK7 antibody

UniProt: [Q8WTQ7](#)

Pathways: [Regulation of G-Protein Coupled Receptor Protein Signaling](#), [Phototransduction](#)

Application Details

Application Notes: Recommended dilution: IF:1:50-1:200,

Restrictions: For Research Use only

Handling

Format: Liquid

Buffer: Preservative: 0.03 % Proclin 300
Constituents: 50 % Glycerol, 0.01M PBS, pH 7.4

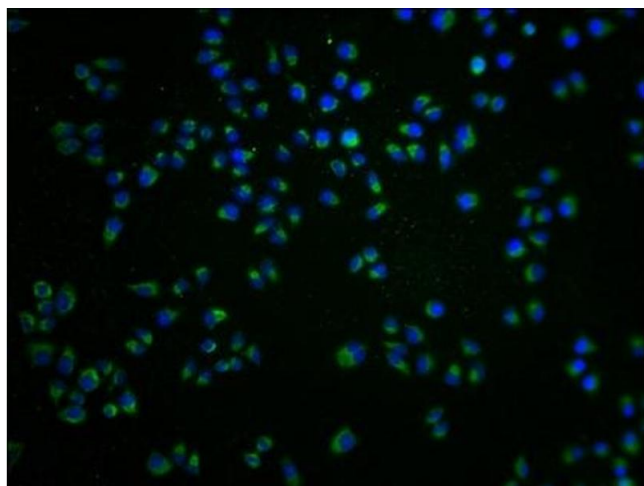
Preservative: ProClin

Precaution of Use: This product contains ProClin: a POISONOUS AND HAZARDOUS SUBSTANCE which should be handled by trained staff only.

Storage: -20 °C,-80 °C

Storage Comment: Upon receipt, store at -20°C or -80°C. Avoid repeated freeze.

Images



Immunofluorescence

Image 1. Immunofluorescence staining of HeLa cells with ABIN7168054 at 1:100, counter-stained with DAPI. The cells were fixed in 4 % formaldehyde and blocked in 10 % normal Goat Serum. The cells were then incubated with the antibody overnight at 4 °C. The secondary antibody was Alexa Fluor 488-conjugated AffiniPure Goat Anti-Rabbit IgG(H+L).