

Datasheet for ABIN7168103

**anti-Ribonuclease H1 antibody (AA 73-185)**[Go to Product page](#)**3** Images

## Overview

Quantity:	100 µg
Target:	Ribonuclease H1 (RNASEH1)
Binding Specificity:	AA 73-185
Reactivity:	Human
Host:	Rabbit
Clonality:	Polyclonal
Conjugate:	This Ribonuclease H1 antibody is un-conjugated
Application:	Western Blotting (WB), ELISA, Immunohistochemistry (IHC)

## Product Details

Immunogen:	Recombinant Human Ribonuclease H1 protein (73-185AA)
Isotype:	IgG
Cross-Reactivity:	Human
Purification:	>95%, Protein G purified

## Target Details

Target:	Ribonuclease H1 (RNASEH1)
Alternative Name:	RNASEH1 ( <a href="#">RNASEH1 Products</a> )
Background:	Background: Endonuclease that specifically degrades the RNA of RNA-DNA hybrids (PubMed:10497183). Plays a role in RNA polymerase II (RNAP II) transcription termination by

## Target Details

degrading R-loop RNA-DNA hybrid formation at G-rich pause sites located downstream of the poly(A) site and behind the elongating RNAP II (PubMed:21700224).

Aliases: RNASEH1 antibody, RNH1 antibody, Ribonuclease H1 antibody, RNase H1 antibody, EC 3.1.26.4 antibody, Ribonuclease H type II antibody

UniProt: [O60930](#)

## Application Details

Application Notes: Recommended dilution: WB:1:500-1:5000, IHC:1:200-1:500,

Restrictions: For Research Use only

## Handling

Format: Liquid

Buffer: Preservative: 0.03 % Proclin 300  
Constituents: 50 % Glycerol, 0.01M PBS, pH 7.4

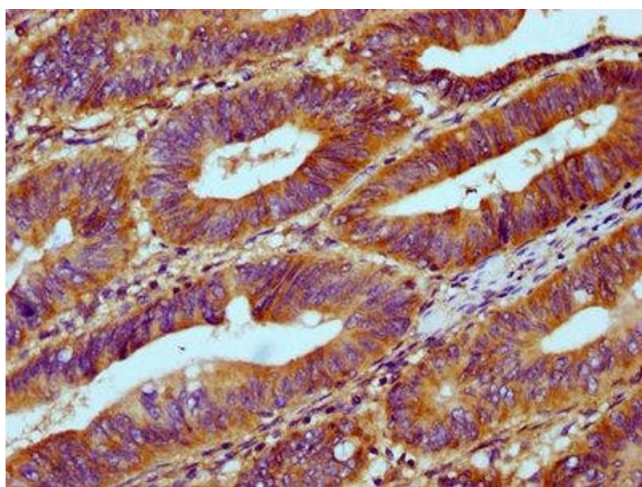
Preservative: ProClin

Precaution of Use: This product contains ProClin: a POISONOUS AND HAZARDOUS SUBSTANCE which should be handled by trained staff only.

Storage: -20 °C,-80 °C

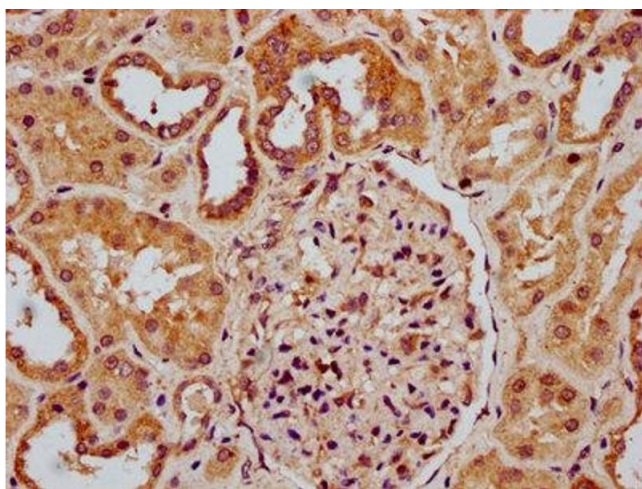
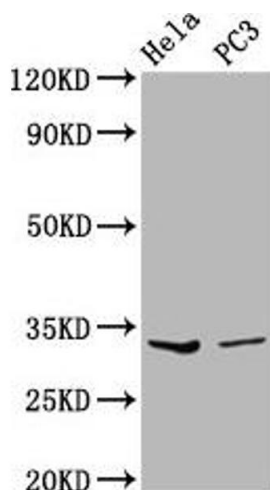
Storage Comment: Upon receipt, store at -20°C or -80°C. Avoid repeated freeze.

## Images



### Immunohistochemistry

**Image 1.** IHC image of ABIN7168103 diluted at 1:300 and staining in paraffin-embedded human colon cancer performed on a Leica Bond™ system. After dewaxing and hydration, antigen retrieval was mediated by high pressure in a citrate buffer (pH 6.0). Section was blocked with 10% normal goat serum 30min at RT. Then primary antibody (1% BSA) was incubated at 4°C overnight. The primary is detected by a biotinylated secondary antibody and visualized using an HRP conjugated SP system.



### Western Blotting

**Image 2.** Western Blot Positive WB detected in: HeLa whole cell lysate, PC-3 whole cell lysate All lanes: RNASEH1 antibody at 3.59 µg/mL Secondary Goat polyclonal to rabbit IgG at 1/50000 dilution Predicted band size: 33 kDa Observed band size: 33 kDa

### Immunohistochemistry

**Image 3.** IHC image of ABIN7168103 diluted at 1:300 and staining in paraffin-embedded human kidney tissue performed on a Leica Bond™ system. After dewaxing and hydration, antigen retrieval was mediated by high pressure in a citrate buffer (pH 6.0). Section was blocked with 10% normal goat serum 30min at RT. Then primary antibody (1% BSA) was incubated at 4°C overnight. The primary is detected by a biotinylated secondary antibody and visualized using an HRP conjugated SP system.