



[Go to Product page](#)

Datasheet for ABIN7168139  
**anti-RRM1 antibody (AA 1-792)**

1 Image

### Overview

Quantity:	100 µg
Target:	RRM1
Binding Specificity:	AA 1-792
Reactivity:	Human
Host:	Rabbit
Clonality:	Polyclonal
Conjugate:	This RRM1 antibody is un-conjugated
Application:	Western Blotting (WB), ELISA

### Product Details

Immunogen:	Recombinant Human Ribonucleoside-diphosphate reductase large subunit protein (1-792AA)
Isotype:	IgG
Cross-Reactivity:	Human
Purification:	>95%, Protein G purified

### Target Details

Target:	RRM1
Alternative Name:	RRM1 ( <a href="#">RRM1 Products</a> )
Background:	Background: Provides the precursors necessary for DNA synthesis. Catalyzes the biosynthesis of deoxyribonucleotides from the corresponding ribonucleotides.

## Target Details

---

Aliases: R1 antibody, Ribonucleoside diphosphate reductase large subunit antibody, Ribonucleoside diphosphate reductase M1 chain antibody, Ribonucleoside diphosphate reductase subunit M1 antibody, Ribonucleoside reductase, large subunit antibody, Ribonucleoside-diphosphate reductase large subunit antibody, Ribonucleoside-diphosphate reductase subunit M1 antibody, Ribonucleotide reductase large chain antibody, Ribonucleotide reductase large subunit antibody, Ribonucleotide reductase M1 antibody, Ribonucleotide reductase M1 polypeptide antibody, Ribonucleotide reductase R1 subunit antibody, Ribonucleotide reductase, M1 subunit antibody, RIR 1 antibody, RIR1 antibody, RIR1\_HUMAN antibody, RR 1 antibody, RR1 antibody, RRM 1 antibody, RRM1 antibody

UniProt: [P23921](#)

Pathways: [Positive Regulation of Endopeptidase Activity](#)

## Application Details

---

Application Notes: Recommended dilution: WB:1:1000-1:5000,

Restrictions: For Research Use only

## Handling

---

Format: Liquid

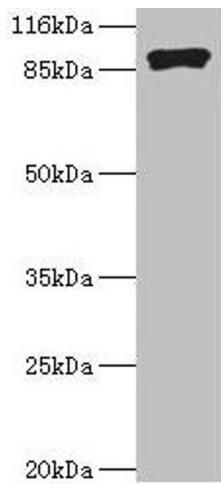
Buffer: Preservative: 0.03 % Proclin 300  
Constituents: 50 % Glycerol, 0.01M PBS, PH 7.4

Preservative: ProClin

Precaution of Use: This product contains ProClin: a POISONOUS AND HAZARDOUS SUBSTANCE which should be handled by trained staff only.

Storage: -20 °C,-80 °C

Storage Comment: Upon receipt, store at -20°C or -80°C. Avoid repeated freeze.



### Western Blotting

**Image 1.** Western blot All lanes: RRM1 antibody at 2  $\mu$ g/mL + HeLa whole cell lysate Secondary Goat polyclonal to rabbit IgG at 1/10000 dilution Predicted band size: 91 kDa Observed band size: 91 kDa